



We keep you cool.

Mission

“To deliver high-quality, American-made solutions to thermal insulation problems.”

Story

Family owned and operated since its conception in 1985, Heatshield Products, Inc. has been serving the performance and racing industry with the highest quality products at competitive prices. During these 30 years of business, we have been able to expand our cutting edge products and great customer service to include thermal protection for many industries, not just automotive anymore. Currently we serve the motorcycle, marine, DOD, industrial manufacturing, welding, and many more.

The Truth

We offer no bs and we don't employ marketing tricks to get you to buy a product. We offer the correct operational temperature of a product, and let you know its limitations. We don't give you its limitations and play them off as the products operational capacity.

Capabilities

Custom manufacturing and private labeling are not a problem here at Heatshield Products. We currently offer such programs to several OEM and aftermarket manufacturers. We can even offer consulting services for product design and improving energy efficiency of your manufacturing process. Over the years we have found the answer to many thermal insulation problems, now let us solve yours.

We are still hot-rodders at heart but that aggressive go fast attitude helps us solve any of your insulation needs, whatever they may be.

Does the competition have you going up in smoke?

SEEK AND DESTROY HEAT

Exhaust Insulation.....	Page 4
Header Armor.....	Page 5
Heatshield Armor.....	Page 6
Premium Exhaust & Cobra Skin Exhaust Wrap.....	Page 7
Inferno Wrap	Page 8
Lava Wrap & Exhaust Wrap.....	Page 9
Black Exhaust Wrap & HP Manifold Shield.....	Page 10
HP Stack Sack.....	Page 11
Heatshield Barriers.....	Page 12
HP Sticky Shield & Lava Shield.....	Page 13
HP Stealth Shield.....	Page 14
Inferno Shield & Thermafect Shield.....	Page 15
Cobra Shield.....	Page 16
Thermafect Cloth & Heatshield Mat.....	Page 17
Turbo Heatshields	Page 18
Lava Turbo Shield & HP Turbo Shield	Page 18
Stealth Turbo Shield & HP Turbo Shield Kit.....	Page 19
Heatshield Sleeving	Page 20
HP Thermal Sleeving.....	Page 20
Hot Rod Sleeving & Lava Tube	Page 21
Thermafect Sleeve.....	Page 22
HP Color Sleeve & HP Hose Sleeve.....	Page 23
Fire Shield Sleeve.....	Page 24
Heatshield Tape & Fasteners	Page 25
Thermal-Tie.....	Page 25
Thermafect Tape & Heatshield Weld Tape,	Page 26
Cool Foil Tape, HP Spring, HP Tie Wire.....	Page 27
Component Specific Heat Shields	Page 28
I-M Shield.....	Page 28
FR Shield & HP Starter Shield.....	Page 29
Lava Motor Mount Heat Shield & Lava Starter Shield.....	Page 30
Race Car and Track Products	Page 32
HP Floor Shield & HP Light Floor Shield	Page 32
HP Cool Can Shield & Racecool	Page 33
Ignition Heatshields	Page 34
Lava Boot Shields	Page 34
HP Boot & Insul-Boot	Page 35
Sound Insulation	Page 36
db Armor & db Suppressor	Page 37
db Sniper & db Skin	Page 38
db Shield & db Gasket	Page 39
Welding	Page 40
HP Welding Pillow & Pinky Armor	Page 40
HP Torch Blanket & HP Welding Jacket	Page 41

We keep you cool.

Exhaust Insulation

Don't let the heat of the competition make you sweat, use exhaust and header wrap to keep your cool! Browse our full line of exhaust wraps and header wraps, from the extreme to mundane, black, white, and colors to suit your every need. Wrapping your exhaust pipes retains heat in your exhaust system. That creates hotter exhaust gases, this allows those gases to flow out of the exhaust system faster. This creates a scavenging effect, and it helps to pull intake gases through the system quicker. This helps to lower the intake temperatures, creating more power. The header pipe wraps can also lower under hood temperatures by as much as 50%. This can lower intake temps even more, creating more power in addition to keeping you cool inside your ride.

All of our exhaust and header wraps are asbestos free and made from base high quality yarns. They are all water resistant; they do not cause exhaust pipes to rust. You do not have to soak the wrap to install, instead try wetting it with a spray bottle. Fiberglass, basalt, silica, don't shrink because they get wet like a cheap t-shirt, soaking the wrap doesn't cause it to shrink onto the pipe. Wetting it causes it to grip a little more during the installation process. If you do soak it or if you drive through severely high water, be sure you run your car long enough so any water that made it through behind the wrap has evaporated before turning your car off.

All of our exhaust shields and wraps are asbestos free and are made from a base high quality materials. They are all water and fungus resistant and have been made here in the USA since 1985.

Naturally Aspirated Applications: headers, exhaust manifold, muffler, catalytic, converter, exhaust pipe	Exhaust Wrap, Black Exhaust Wrap, HP Color Wrap	Good
	Lava Wrap	Better
	Premium Exhaust Wrap, Cobra Skin Exhaust wrap, Heatshield Armor (1/4" thick), Header Armor (1/4" thick)	Best
Forced Induction Applications: headers, exhaust manifold, muffler catalytic converter, turbo manifold, down-pipe, up-pipe, dpf	Lava Wrap (less than 1200°F)	Good
	Premium Exhaust Wrap, Cobra Wrap (Less than 1350°F)	Better
	Inferno Wrap, Heatshield Armor (1/2" thick), Header Armor (1/2" thick)	Best

HEADER ARMOR

RATED TO: 1800°F CONTINUOUS 2200°F INTERMITTENT

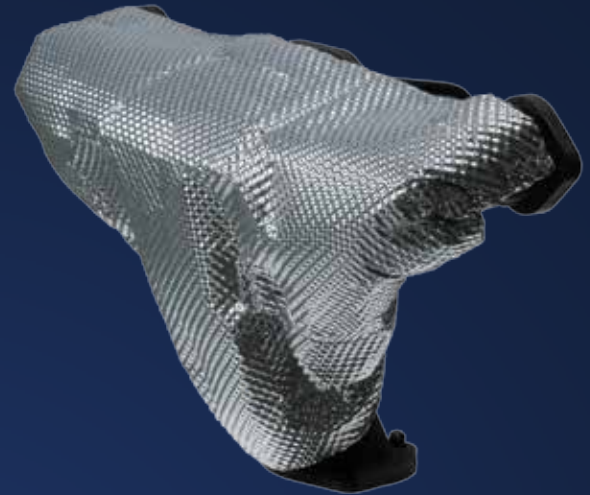
Don't let the heat of your engine make you sweat! You can reduce under-hood temperatures by up to 40%, keeping you cool at the track or on the street with the easiest to install and longest lasting heatshield blanket available for your headers: the all-new Header Armor from Heatshield Products.

The abrasion-resistant Header Armor cuts effortlessly with heavy-duty scissors, making it simple to wrap around the headers. Removal of the headers is not necessary for installation on many vehicles. Header Armor is capable of withstanding a continuous 1800°F with intermittent spikes of 2200°F, and it lasts longer than other exhaust wraps. In addition to being abrasion-resistant, Header Armor has an aluminum layer that rejects chemicals. Because it does not completely wrap the entire header, it is compliant with most header manufacturers' warranties. Kits are available for single headers and a pair of headers, and all kits include a small spool of Inconel wire to secure the Header Armor in place.

Wrapping headers with a high-efficiency heat blanket keeps heat in the exhaust system, moving it out of the engine compartment. This lowers under-hood temperatures, helping with overall engine cooling and transferring less heat to the passenger compartment through the firewall.

Header Armor also results in hotter and faster-flowing exhaust gases that create a scavenging effect to pull intake gases through the system quicker. This lowers intake temperatures, resulting in more power.

Fly low, fast and cool with Header Armor from Heatshield Products!



PART NO.	DESCRIPTION
177004	18" x 24" ¼" thick
170005	18" x 24" ¼" thick (2 pieces)
177014	18" x 24" ½" thick
177015	18" x 24" ½" thick (2 pieces)

FEATURES

- Reduces radiant heat up to 70%
- May be cleaned after installation
- Water and element resistant
- Reduces under hood temperatures up to 60%
- 0.003" thick armor layer
- Includes HP Tie Wire for installation

HEATSHIELD ARMOR

RATED TO: 1800°F
CONTINUOUS

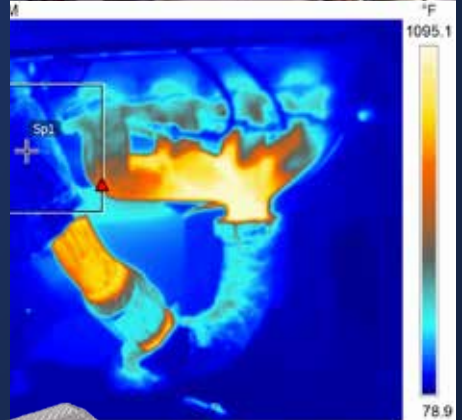
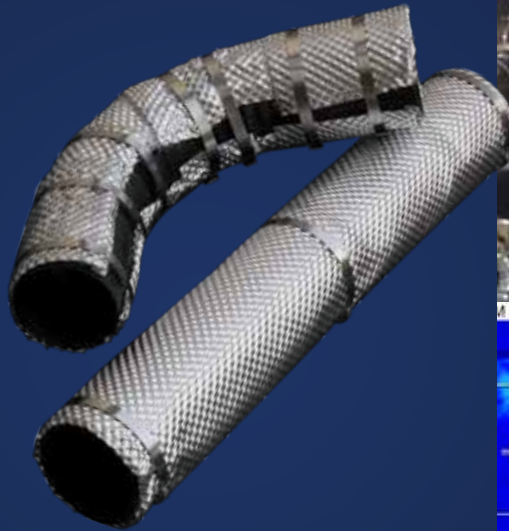
2200°F
INTERMITTENT

Looking for something easier to install than exhaust wrap on your pipes, then check out our exhaust heat shield! Heatshield Armor can reduce radiant heat from your exhaust pipe by 70%. The outer armor of this exhaust heat shield allows it to be cleaned after installation, gives it a long lifespan, and also makes Heatshield Armor resistant to the elements. The inner ceramic liner makes it capable of withstanding 1800°F continuous, which allows this heat shield to be placed directly on exhaust system, turbo manifolds, down pipes, and DPF.

This makes it a far superior insulator to the clamp on heat shields that allow heat to escape because they are set above the pipe not directly insulating it, allowing heat to escape. It is flexible, easy to cut (you can use a pair of heavy scissors) and install. A distinct Armor advantage over an all alloy exhaust heat shield, you do not get the hot side to cold side heat conduction, because there is no metal to metal contact layer! Heatshield Armor can even be repaired with one of our Heatshield Armor Weld tapes! We recommend the 1/2" thick Heatshield Armor for forced induction and racing applications.



PART NO.	DESCRIPTION
170001	¼" thick x 6" W x 5' L
170002	¼" thick x 6" W x 10' L
170102	¼" thick x 1' W x 2' L
170103	¼" thick x 1' W x 3' L
170104	¼" thick x 1' W x 4' L
170105	¼" thick x 1' W x 5' L
170202	¼" thick x 2' x 2'
175102	½" thick x 1' W x 2' L
175103	½" thick x 1' W x 3' L
175104	½" thick x 1' W x 4' L
175105	½" thick x 1' W x 5' L
175110	½" thick x 18" W x 4' L
175111	½" thick x 18" W x 5' L
175115	½" thick x 18" W x 10' L
175202	½" thick x 2' x 2'
175304	½" thick x 3' W x 4' L
175325	½" thick x 3' W x 25' L



FEATURES:

- Reduces radiant heat up to 70%
- May be cleaned after installation
- Water and element resistant
- Reduces under hood temperatures up to 60%
- 0.003" thick armor layer

HEATSHIELD ARMOR KITS

Heatshield Armor kits feature the same great benefits as our Heatshield Armor, but include our heavy duty 5/16" wide Thermal-Ties.

PART NO.	DESCRIPTION
171005	¼" thick x 1' W x 5' with 6 ties
176001	½" thick x 1' W x 3' L with 4 ties
176005	½" thick x 1' W x 5' L with 6 ties



PREMIUM EXHAUST WRAP

RATED TO: 1350°F
CONTINUOUS

2000°F
INTERMITTENT

Wrap up the heat from your exhaust and header! Our premium grade exhaust wrap features a tighter weave than any other fiberglass heat wrap on the planet. This tighter weave retains more heat and makes our header wrap less susceptible to fraying. In addition to the tightest weave, it features our HPTC coating. For most header wraps the fiberglass will become weak and brittle at 1000°F, coatings (like graphite or vermiculite) will extend the base temp to 1200°F, but the fibers will still become brittle. All fiberglass exhaust wraps have a base maximum operating temperature of 1000°F. Our new HPTC coating allows our premium wrap to operate at 1350°F continuously. With our new coating, not only does it give the fiberglass a higher rated temperature of 1350°F, but it allows the fibers to remain flexible and strong at 1350°F. Flexible fibers will expand and contract with the metal of the exhaust system, ensuring long term maximum heat retention and a longer life! No more brittle wrap turning into powder and falling off your pipes. The improved flexibility and strength also gives Premium Exhaust Wrap an increased abrasion resistance even at 1350°F. It also results less fraying when cutting, installing, fewer loose fibers, and less itch. The black HPTC is deep black and it stays deep black after it has been heat cycled and also comes in bright white.



PART NO.	DESCRIPTION
301002	White 1" x 25' Roll
301004	White 1" x 50' Roll
301006	White 1" x 100' Roll
302001	White 2" x 15' Roll
302002	White 2" x 25' Roll
302006	White 2" x 50' Roll
302009	White 2" x 100' Roll
302011	White 4" x 100' Roll
302013	White 6" x 100' Roll
307014	Black 1" x 50' Roll
307021	Black 2" x 15' Roll
307024	Black 2" x 50' Roll

FEATURES:

- Remains soft, flexible and strong at 1350°F
- Excellent abrasion resistance
- Tighter weave than other wraps
- 35% More temperature resistance
- All Rolls 1/16" thick

COBRA SKIN EXHAUST WRAP

RATED TO: 1350°F
CONTINUOUS

2000°F
INTERMITTENT

Cobra Skin wrap uses our new HPTC coating, allowing it to sustain 1350°F continuously. In addition to increased temperature parameters, it also allows the wrap to remain flexible and strong. For most header wraps the fiberglass will become weak and brittle at 1000°F, coatings will extend the base temp to 1200°F, but the fibers will still become brittle. With our new coating, not only does it give the fiberglass a higher rated temperature of 1350°F, but it allows the fibers to remain flexible. Flexible fibers will expand and contract with the metal of the exhaust system, ensuring long term maximum heat retention and a longer life! The coating also gives our wraps an increased abrasion resistance even at 1350°F and results less fraying when cutting, installing, fewer loose fibers, and less itch. The black HPTC is deep black and it stays deep black after it has been heat cycled. Cobra Skin exhaust wrap features a special weave making it easier to wrap around bends in pipes compared to conventional exhaust wraps. The special weave also gives this exhaust wrap a carbon fiber look after it has been installed!



PART NO.	DESCRIPTION
380008	1" x 25' Roll
380009	1" x 50' Roll
380011	2" x 15' Roll
380012	2" x 25' Roll
380013	2" x 50' Roll

FEATURES

- Remains soft, flexible and strong at 1350°F
- Special weave makes it easier to wrap around bends
- Has carbon fiber look
- Reduces under hood temperatures up to 50%
- All rolls 1/16" thick

INFERNO HEADER WRAP

RATED TO: 2000°F
CONTINUOUS

3000°F
INTERMITTENT

Tired of that “Brand X” 2000°F header wrap becoming brittle and falling apart? Look no further than our Inferno Header Wrap to solve the problem. Unlike fiberglass and basalt (volcanic) exhaust wraps (which should be advertised at a 1200°F operating temperature), our Inferno Wrap is made from silica yarn making this header wrap soft, strong, and flexible while operating at its designed operating temperature of 2000°F continuous. It will sustain the extreme temperatures that your glowing pipes from the turbo, down pipe, header, manifold, or racing applications require. Simply put, there is not an insulating wrap on the market that will take higher temperatures and last longer. In fact, this header wrap can withstand intermittent temperatures of 3000°F, making it the only wrap to use on your forced induction or racing application. You can actually wrap the header with Inferno Wrap, run it, heat it up, and then unwrap Inferno Wrap from the header when needed. Wrap or “coil” Inferno Wrap around your header pipe, using overlap to hold itself in place (like a hockey stick or tennis racket grip) use our Thermal-Tie, hose clamps, or wire to secure ends in place.



PART NO.	DESCRIPTION
325001	1" x 25' Roll
325002	1" x 50' Roll
325005	2" x 15' Roll
325025	2" x 25' Roll
325050	2" x 50' Roll
325100	2" x 100' Roll
325400	4" x 100' Roll

FEATURES:

- Remains flexible even at 2000°F
- Reduces under hood temperatures up to 50%
- Increases horsepower
- Great turbo manifold wrap
- All rolls are 1/16" thick



LAVA EXHAUST WRAP

Hey brah, Madame Pele says lava keeps you cool! Made from crushed volcanic rock (basalt fiber), our Lava Wrap has all the same benefits as exhaust wrap with that trick carbon fiber look and improved durability! This exhaust wrap is 25% stronger than fiberglass wraps, giving it a prolonged life and greater durability. Using Lava Wrap on a header and exhaust system, maintains hotter exhaust gases, decreases gas density, and that allows the exhaust gas to flow out of the system faster! Greater exhaust scavenging is produced, pulling intake gases through the cycle faster, helping to lower air intake temperatures. This gives you more horsepower! This wrap also reduces radiant heat damage and can lower under hood temperatures by as much as 50%. Our Lava Wrap withstands 1200°F continuous and 2000°F intermittent. Please note this is a real world tested rating, please don't believe over inflated temperature ratings of similar basalt/volcanic rock products! Wrap Lava Wrap around your exhaust pipe, using overlap to hold itself in place (like a hockey stick or tennis racket grip) use our Thermal-Tie, hose clamps, or wire to secure ends in place.

RATED TO: 1200°F CONTINUOUS 2000°F INTERMITTENT



PART NO.	DESCRIPTION
371025	1" x 25' Roll
371050	1" x 50' Roll
372005	2" x 15' Roll
372025	2" x 25' Roll
372050	2" x 50' Roll
372100	2" x 100' Roll
372400	4" x 100' Roll

FEATURES

- Special weave makes it easier to wrap around bends
- Has a carbon fiber look
- 25% stronger than fiberglass wraps
- Reduces under hood temperatures up to 50%
- All rolls are 1/16" thick

EXHAUST WRAP

Exhaust wrap can lower under hood temperatures by as much as 50%. Lower under hood temperatures mean lower intake temperatures, that means more horsepower and better fuel efficiency. Wrapping the exhaust system maintains hotter exhaust gases, decreases the gas density, and that allows the exhaust gas to exit the system faster! Increased exhaust scavenging is produced helping to lower intake temperatures by literally pulling them through the cycle faster: that equals more horsepower. Exhaust wrap also keeps heat out of the drivers compartment and reduces heat damage to other components. Our exhaust wrap features a vermiculite coating which makes it capable of withstanding 1200°F continuous and 2000°F intermittent. Wrap or "coil" the wrap around your exhaust pipe, using an overlap to hold itself in place (like a hockey stick or tennis racket grip). Use our Thermal-Tie, hose clamps, or wire to secure ends in place.

RATED TO: 1200°F CONTINUOUS 2000°F INTERMITTENT



PART NO.	DESCRIPTION
311025	1" x 25' Roll
311050	1" x 50' Roll
311100	1" x 100' Roll
312015	2" x 15' Roll
312025	2" x 25' Roll
312050	2" x 50' Roll
312100	2" x 100' Roll
312104	4" x 100' Roll
312106	6" x 100' Roll

FEATURES:

- Lowers under-hood temps up to 50%
- Increases exhaust scavenging
- All rolls are 1/16" thick

BLACK EXHAUST WRAP

RATED TO: 1200°F
CONTINUOUS

2000°F
INTERMITTENT

Black exhaust wrap maintains hotter exhaust and header gases, decreases the density, and that allows the exhaust gas to exit the system faster! Increased exhaust scavenging is produced; this pulls the intake gases through the cycle faster, helping to lower intake temperatures: that equals more horsepower. Our black exhaust wrap also reduces radiant heat damage and can lower under hood temperatures by as much as 50%. This exhaust wrap features a proprietary black coating and it holds its color longer than similar graphite coated wraps. It can withstand 1200°F continuous and 2000°F intermittent. Wrap or "coil" the black wrap around your exhaust pipe, using overlap to hold itself in place (like a hockey stick or tennis racket grip). Use our Thermal-Tie, hose clamps, or wire to secure ends in place.



PART NO.	DESCRIPTION
321025	1" x 25' Roll
321050	1" x 50' Roll
321100	1" x 100' Roll
322015	2" x 15' Roll
322025	2" x 25' Roll
322050	2" x 50' Roll
322100	2" x 100' Roll
324100	4" x 100' Roll
326100	6" x 100' Roll

FEATURES:

- Lowers under-hood temps up to 50%
- Deep black coating stays black
- Increases exhaust scavenging
- All rolls are 1/16" thick

HP MANIFOLD SHIELD

RATED TO: 1800°F
CONTINUOUS

2200°F
INTERMITTENT

HP Manifold Shield is designed to keep heat inside your exhaust and turbo manifold. Made from rugged high temperature materials, this manifold heat shield is designed to sustain temperatures of 1800°F continuous. Retaining heat in your exhaust system, decreases gas density, allowing the gases to exhaust your turbo manifold, turbo, and downpipe faster. This can increase the boost of your turbo, reduce turbo lag, eliminate chatter, and improve the overall efficiency of your turbo. Use our manifold heat shield in conjunctions with one of our turbo heat shields, and down pipe heat shields, and reduce your under-hood temperatures up to 80% and increase performance. Installs in minutes, use anchor hooks with safety wire.



PART NO.	DESCRIPTION
300100	03-07 Dodge 24V Cummins; Silver
300101	88-02 Dodge 12V Cummins and Twins, Silver
300400	03-07 Dodge 24V Cummins; Black
300401	88-02 Dodge 12V Cummins and Twins, Black
300801	Duramax

FEATURES:

- Capable of reducing up to 60% of radiant heat
- Reduces turbo lag, improves turbo performance
- Custom fit, installs in minutes
- Custom shields available, will require housing to make prototype

HP STACK SACK

HP Stack Sack™ is designed to keep unwanted objects and water out of your exhaust while not in use. The Stack Sack is made from our HP Felt™ material - allowing you to cover your stacks as soon as the vehicle has been turned off - yet soft enough so that it won't scratch chrome or other finishes. HP Felt™ is capable of withstanding 1800°F continuous, but is soft enough not to scratch your chrome stacks. The adjustable hook and loop fastener strap gives a snug fit while being towed down the highway to your next race. This is a must for any pro diesel drag racer!

RATED TO: 1800°F CONTINUOUS 2200°F INTERMITTENT



PART NO.

070001
070002
070003
070004
070006
070007

DESCRIPTION

5" Diameter Stack x 8" tall
6" Diameter Stack x 10" tall
7" Diameter Stack x 10" tall
8" Diameter Stack x 12" tall
3" Diameter Stack x 6" tall
4" Diameter Stack x 6" tall



FEATURES:

- Protects stacks from debris, rain, weather in-between runs
- Soft HP Felt won't scratch most chrome stacks
- Won't melt like vinyl stack caps
- Adjustable Velcro strap for tight fit

"If you don't like heat, move to Wisconsin, or use Heatshield Products"

***Jim Ring
Ring Brothers***



Heatshield Barriers

Heat shield barriers are designed to shield radiant heat. The tricky part to a heat shield barrier is that its heat reflectivity and reduction can change significantly with environmental conditions. You can take one product and have it drop 50% of radiant heat, change the environmental conditions (like distance to heat source and increased air flow), and have it now reduce over 90% of radiant heat. The trick here is, the more air flow and air space you get between the heat shield barrier and the heat source, the greater you improve the products performance. Most heat shield barriers require 1” of airspace; some do not so pay attention to the descriptions of products.

Be creative; use a heat shield barrier to improve the performance of other components. Buy a cold air intake? Use a heat shield to turn it into a real cold air intake. Sleeve it, tape it, or stick it with a heat shield and knock those intake temps down even more. Got hot feet, stick a heatshield on the firewall, trans tunnel or above that catalytic converter and muffler to keep you cool.

Firewall, floor pan, under cab (Above: muffler, catalytic converter, DPF, exhaust system), fuel cell	HP Heatshield Mat	Good
	Thermafect Cloth, Lava Shield, Thermafect Shield	Better
	Lava Shield (heavy duty), HP Sticky Shield, Inferno Shield	Best
Hood, Air Intake System	HP Heatshield Mat	Good
	Lava Shield	Better
	Cobra Cloth, Thermafect Cloth	Best

HP STICKY SHIELD™

RATED TO: 1100°F
CONTINUOUS

2000°F
INTERMITTENT

HP Sticky Shield is the ultimate way to stop heat from radiating into the drivers compartment of your ride. Made from a dense layer of 1/8" fiberglass insulation shielded by a rugged layer of 0.003" thick aluminum, HP Sticky Shield™ may be cleaned after installation and is resistant to the elements. The heavy duty peel and stick adhesive will bond to almost any clean surface (not recommended for unfinished fiberglass or carbon). It is the perfect radiant heat shield for transmission tunnels, mufflers, catalytic converters, DPF's, turbos, downpipes, and exhaust system heat. This HP Sticky Shield can be used with less than 1" of airspace, however when used with 1" or more airspace, it is capable of shielding over 90% of heat. Did that set of long tube headers on your Mustang, Camaro, Challenger, or tuner move your catalytic converter where there are not any factory heat shields? Use Sticky Shield to stop the heat! That Jeep getting some serious heat in the transmission tunnel or from the cat, Sticky Shield it away!

HP Sticky Shield is asbestos free. This product is designed to be used UNDER the vehicle on the floor pan, firewall, transmission tunnel, etc. It is not designed to be used under the carpet. Use included Heatshield Armor Tape™ to seal seams when putting two of these heat shields together and also protect the edges of HP Sticky Shield™. You can even use the weld tape to repair any damage caused to HP Sticky Shield from on or off road hazards.

Please note, this product ships folded or rolled to keep costs down. You may see bends in it when it is received, bends will become minimally visible after installation.



PART NO.

DESCRIPTION

180020	1/8" thick x 11" x 23"
180021	1/8" thick x 24" x 23"
180022	1/8" thick x 11" x 10"
180025	1/8" thick x 36" x 46"

FEATURES:

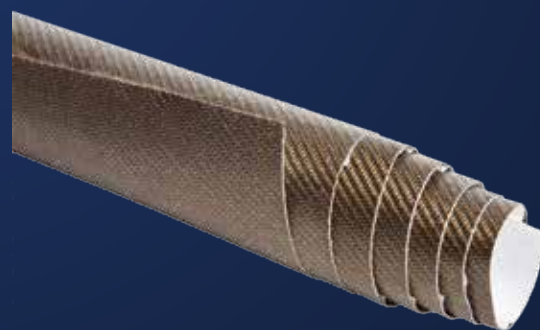
- Reflects up to 90% of radiant
- May be cleaned after installation
- Flexible, bends and conforms to almost any shape
- Adhesive backing sticks to almost any clean surface
- 0.003" thick armor layer

LAVA SHIELD

RATED TO: 1200°F
CONTINUOUS

2000°F
INTERMITTENT

Made from crushed volcanic rock, our Lava Shield has similar benefits as our HP Heatshield Mat with that trick carbon fiber look! This insulator helps to reflect and dissipate heat making it perfect to be an air box heat shield or a heat shield barrier to protect the paint on your carbon fiber/fiberglass hood. Due to basalt's (mineral from volcanic rock) natural chemical and acid resistant properties, Lava Shield is excellent for use in harsh environments Our Lava Shield may be used on a fire-wall to shield radiant heat it is also perfect to shield heat in transmission tunnels. Love your carbon hood, but don't want to put an ugly heatshield on it? Well here you go, keep the look but have the functionality of the Lava Shield. It can be used with less than 1" of airspace, 3/8" minimum is recommended. It is also better to use Lava Shield applications where there is little air flow, making it a superior insulator to aluminum and gold barriers fabrics in these conditions. Lava Shields withstands 1200°F direct continuous and 2000°F intermittent.



PART NO.

DESCRIPTION

770001	0.008" thick, 12" x 24"
770002	0.008" thick, 24" x 24"
770003	0.008" thick, 36" x 48"
770005	0.008" thick, 48" x 60"
781002	0.025" thick, 24" x 24"
781003	0.025" thick, 36" x 47"
781005	0.025" thick, 47" x 60"

FEATURES:

- Capable of reducing up to 80% of radiant heat
- Adhesive backing sticks to almost any clean surface
- Helps shield fire walls, hoods, body panels, floor boards
- Bulk rolls available

HP STEALTH SHIELD

RATED TO: 1800°F CONTINUOUS 2200°F INTERMITTENT

HP Stealth Shield is the only product engineered and proven to reduce heat from inside your vehicle! HP Stealth Shield uses the proprietary technology developed for Heatshield Products welding blankets. This results in a revolutionary product that's only 1/8-inch thick! It's designed to mount inside your vehicle on top of the floor or sound deadener to protect you from heat radiating from the engine and exhaust. This specially engineered mat is extremely efficient at dissipating heat. HP Stealth Shield will fit under carpet without causing fitment issues. Simply lay HP Stealth Shield on top of your floor pan, db Armor, db Suppressor, db Skin or other sound dampener. That's right—it can be installed on top of sound deadener. It's capable of withstanding a continuous 1800°F, so it's more than ready to handle anything your floor boards and interior are subjected to. HP Stealth Shield may also be used on the roof, above a headliner using adhesive spray.

Please note: HP Stealth Shield is to be used underneath a carpet or above the headliner, it should not be used by itself without a cover. It won't make you itch, but the black fibers may get on your hands and clothes. In addition, constant abrasion will cause it to wear out.



FEATURES:

- Capable of reducing interior temperatures by as much as 40%
- Knocks heat out underneath your carpet
- Only 1/8" thick, minimal impact on carpet fitment
- Can be sewn into a headliner
- Bulk rolls available, minimums apply

PART NO.	DESCRIPTION
810001	1/8" thick x 24" x 53"
810002	1/8" thick x 48" x 53"
810003	1/8" thick x 53" x 10'

INFERNO SHIELD

More than just another heat shield, Inferno Shields™ can be custom configured to handle whatever your thermal requirements are. These heat shields can be bent, folded and twisted to form a custom shape. Our heat shields come in three different grades of alloy: aluminum (900°F continuous), stainless steel (1800°F continuous) and Inconel (2200°F continuous). All of these alloy heat shields have an inner ceramic pad that can be trimmed, then fold over outer alloy layer for a custom size or fit. Larger and custom heat shields available with volume purchase. All of these heat shields may be fastened with Thermal-Tie™, safety wire, screws, or rivets.

RATED TO: 900°F CONTINUOUS TO 2200°F CONTINUOUS



PART NO.	DESCRIPTION
110614	Aluminum 6" x 14"; 900°F
120614	321 Stainless 6" x 14"; 1800°F
120620	321 Stainless 14" x 20"; 1800°F
120636	321 Stainless 24" x 36"; 1800°F
130614	600 Inconel, 6" x 14"; 2200°F

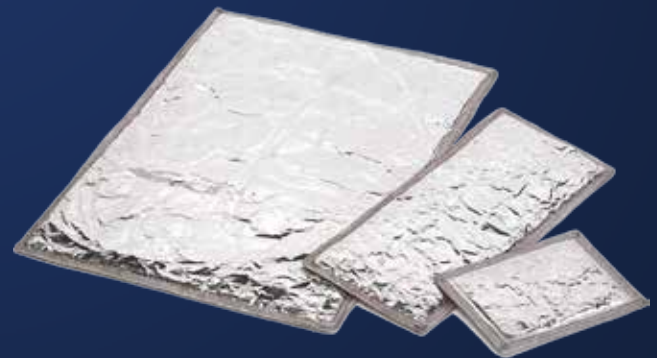
FEATURES:

- Capable of reflecting over 90% of radiant heat
- Flexible, bends and will hold its shape
- Simple installation, install in minutes
- Perfect radiant heat shield for mufflers, catalytic converters, DPF, and more

THERMAFLECT SHIELD™

This universal, flexible heat shield is rugged enough to be used for almost any radiant heat application. If used with a 1" air gap between the heat source and Thermafect Shield, and good air flow and this heat shield can reflect over 90% of radiant heat. We use a ¼" thick ceramic inner pad sandwiched between heavy duty foil and bound and sewn together with a stainless steel mesh at the edges. By binding the edges with this mesh, we create greater flexibility and a more rugged product. This heat shield withstands 1100°F continuous radiant heat and 500°F of direct contact. Thermafect Shield is intended for wrapping around air boxes, electrical boxes, air conditioning components, or used to shield radiant heat shield from catalytic converter, muffler, DPF, on the bottom of the floor pan. Thermafect Shield may be fastened with Thermal-Tie, safety wire, screws, or rivets. This heat shield is not recommended for direct contact with heat source, such as an exhaust system, it is used to deflect heat away.

RATED TO: 1100°F CONTINUOUS 2000°F INTERMITTENT



PART NO.	DESCRIPTION
100507	¼" thick x 5" x 7"
100614	¼" thick x 6" x 14"
101420	¼" thick x 14" x 20"

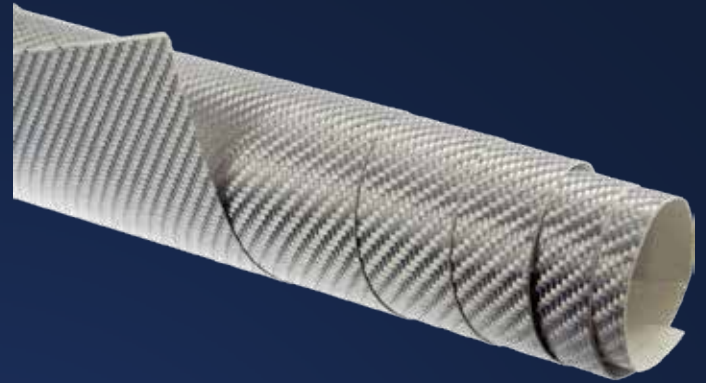
FEATURES:

- Capable of reflecting over 90% of radiant heat
- Flexible, bends and conforms to almost any shape
- Simple installation, install in minutes!
- Perfect radiant heat shield for mufflers, catalytic converters, DPF, and more
- Custom shields available

COBRA SHIELD

RATED TO: 1100°F CONTINUOUS 2000°F INTERMITTENT

Cobra Cloth is the ultimate thermal barrier. Featuring a new proprietary manufacturing process and new chemical resistant coating. Aluminum particles are bonded on a molecular level, as opposed to a laminate like most aluminized heat barriers. This makes Cobra Cloth stronger, abrasion resistant, and won't delaminate when subject to excessive moisture. In addition to the strong aluminized bond, we have added a new coating! This new coating makes it easy to clean, chemical resistant, and resist corrosion. Cobra Cloth is the ultimate heat shield for your transmission tunnel, hood, firewall, floor pan, etc. Cobra Cloth withstands 1100°F continuous and 2000°F intermittent.



PART NO.	DESCRIPTION
750002	0.014" thick x 24" x 24"
750004	0.014" thick x 36" x 56"

FEATURES:

- Revolutionary aluminized coating, won't delaminate like foil cloths
- Chemical and weather resistant coating
- More rugged and abrasion resistant than laminated cloths
- Reflects radiant heat way
- Helps shield fire walls, hoods, body panels, floor boards



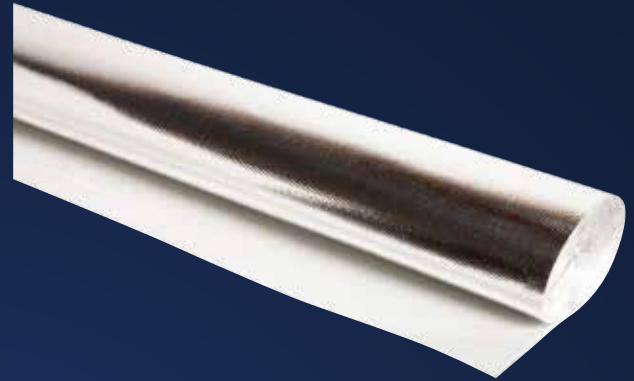
“In the world of custom bikes and hot rods, we constantly encounter high heat and tight tolerances. Heatshield Products help us beat the heat and keep it away from the feet!!!”

***Bryan Fuller
Fuller Hot Rods***

THERMAFLECT CLOTH

RATED TO: 1100°F CONTINUOUS 2000°F INTERMITTENT

This heat shield cloth, has a high quality “mirror” finish compared to most other reflective aluminized cloth mats. In addition it weighs 40% less than comparable aluminized fiberglass cloth products. When used in applications when there is 1” of airspace and good air flow, Thermafect Cloth is capable of reflecting 90% of radiant heat. The mirror like finish and light weight construction will blow the gold vinyl sticker stuff away with its reflectivity. Use it as a heat shield for: under your hood, on a fuel cell, aluminum intercooler pipes, air filter box, or turn your aftermarket intake into real cold air intake! To install, face the aluminized side toward the source of heat to shield heat away. This product withstands 1100°F of radiant heat (requires minimum of 1” of airspace) and up to 450°F of direct heat. Thermafect Cloth is available with a high temperature peel and stick adhesive that will stick to almost any clean surface. It is not recommended for rough unfinished fiberglass or carbon fiber.



PART NO.	DESCRIPTION
710040	36” x 58” non-adhesive
711002	24” x 26” with self-adhesive (ships folded)
711005	36” x 58” with self-adhesive

FEATURES:

- Capable of reducing up to 90% of radiant heat
- Adhesive sticks most clean surfaces-not recommended for rough/unfinished fiberglass
- Helps shield fire walls, hoods, body panels, floor boards
- Bulk rolls and custom widths available, minimums apply

HP HEATSHIELD MAT

RATED TO: 1100°F CONTINUOUS 2000°F INTERMITTENT

Keep your cool in the heat with our HP Heatshield Mat. When used in applications when there is 1” of airspace and air flow, this heat shield cloth is capable of reflecting 90% of radiant heat. Face the aluminized side toward the source of radiant heat to shield heat away. This product withstands 1100°F of radiant heat (requires minimum of 1” of airspace) and up to 450°F of direct heat. This is perfect for using underneath your floor pan to shield heat from your DPF, muffler, catalytic converter, and exhaust system, or it can be used on your firewall to shield motor heat. It can also be used as a cold air intake heat shield, stick this onto your metal or plastic air box to stop heat from heating up your intake. The HP Heatshield Mat is available with a high temperature peel and stick adhesive. Self-adhesive version is not recommended for rough unfinished fiberglass or carbon fiber. Bulk heat shield cloth rolls available.



PART NO.	DESCRIPTION
720305	36” x 58” non-adhesive
720505	58” x 60” non-adhesive
721005	18” x 18” w/adhesive (ships folded)
721101	12” x 12” w/adhesive (ships folded)
721102	12” x 24” w/adhesive (ships folded)
721150	12” x 50” w/adhesive
721202	24” x 24” w/adhesive (ships folded)
721204	24” x 48” w/adhesive
721305	36” x 58” w/adhesive
721505	60” x 58” w/adhesive

FEATURES:

- Capable of reducing up to 90% of radiant heat
- Adhesive backing sticks to almost any clean surface-not recommended for rough/unfinished fiberglass
- Helps shield fire walls, hoods, body panels, floor boards
- All rolls 0.030” thick
- Bulk rolls and custom widths available, minimums apply

Turbo Heat Shields

RATED TO: 1800°F CONTINUOUS 2200°F INTERMITTENT

Improve the efficiency of your turbo by retaining heat inside with a heat shield. Using a turbo bag can increase boost, reduce turbo chatter (or flutter if you prefer), and help keep the turbo from lagging! In addition to aiding the efficiency of the turbo system, these heat shields can also reduce under hood temperatures by as much as 60%. Lowering your under hood temps, will lower intake temperatures, adding even more power. Our turbo shields, do not conduct heat from the hot side to the cold side like an all metal turbo shield, making it safer to the touch and reducing the amount of heat radiating off the turbo.

Turbo heat shields are not recommended for use on journal bearing turbos.

LAVA TURBO SHIELD

Our Lava turbo heat shields were designed for and tested on the most hardcore racing applications. Lava Turbo Heat Shield™ reduces turbo lag while protecting other engine components and reducing under hood temperatures. The turbo heat shields are custom fit and use extreme temperature materials to keep heat in the hot side of the turbo where it belongs. The Lava Turbo Shield™ has a rugged outer layer of our Lava Mat™ that is 25% stronger than comparable fiberglass shields, giving them a longer life span. The silica contact layer and silica insulation, make the turbo shield capable of withstanding 1800°F continuous. The custom fit design means you do not have to trim or fit the heat shield blanket to fit your turbo housings making installation a snap.



PART NO.	DESCRIPTION
300073	T3 Flange Turbos
300074	T4 Flange Turbos
300075	Large/Mid-Frame T4 Flange Housings
300076	T6 Flange
300078	T2 Flange (G25,27,28) w/ wastegate

FEATURES:

- Capable of reducing up to 60% of under hood heat
- Reduces turbo lag, lowers under hood temperatures
- Does not conduct heat to "cold side" like all metal turbo shields
- Custom fit, installs in minutes
- Custom shields available, will require housing to make prototype

HP TURBO SHIELD

HP Turbo Shield is a custom fit turbo heat bags use cutting edge technology and performance to keep the heat in the hot side of the turbo where it belongs. Retaining heat helps to reduce turbo lag, chatter, and can even increase boost (in some applications) while protecting other engine components. Capable of withstanding 1800°F continuous, our turbo heat shields are designed for street performance to the most hardcore racing applications. The custom fit design means you do not have to trim or fit the heat shield blanket to fit your turbo housings making installation a snap. Includes stainless steel springs to secure turbo shield with anchoring hooks. Includes stainless steel springs to secure on anchoring hooks.



PART NO.	DESCRIPTION
300003	T3 Flange Turbos
300004	T4 Flange Turbos
300005	Large/Mid-Frame T4 Flange Housings
300006	T6 Flange
300008	T2 Flange (G25,27,28) w/ wastegate
300010	88-07 Dodge Cummins®; T3 w/Wastegate

STEALTH TURBO SHIELD

RATED TO: 1800°F CONTINUOUS 2200°F INTERMITTENT

Keep cool, lay low with our Stealth Turbo Heat Shields, the black turbo heat shield you have been waiting for. Retaining heat inside the turbo can not only lower under hood temperatures up to 40%, but it can also reduce chatter, lag, increase boost (in some cases), and reduce radiant heat damage to other engine components. The custom fit turbo heat bags use the same extreme rated technology as our other turbo shields, but they have a new cool black "Stealth" appearance. Capable of withstanding 1800°F continuous, our turbo heat shields are designed for street performance and even the most hardcore racing applications. The custom fit design means you do not have to trim or fit the heat shield blanket to fit your turbo housings making installation a snap, turbo removal is not necessary in most cases, kit includes two stainless steel springs to be used with anchors to hold in place.



PART NO.	DESCRIPTION
300543	T3 Flange
300544	T4 Flange
300545	T4 Flange Mid-Frame/Large
300546	T6 Flange
300548	T2 Flange (G25,27,28) w/ wastegate
300550	88-02 Dodge Cummins 5.9L

FEATURES:

- Continuous operating temperature of 1800°F, 2200°F intermittent
- Capable of reducing up to 60% of under hood heat
- Does not conduct heat like all metal turbo shields
- Reduces turbo lag, lowers under hood temperatures
- Custom fit installs in minutes
- Custom shields available, will require housing to make prototype

HP TURBO SHIELD KIT

RATED TO: 1800°F CONTINUOUS 2200°F INTERMITTENT

Our Turbo Heat Shield Kit™ can help to increase horsepower and reduce turbo lag while protecting other engine components. Unlike other turbo heat shield kits that use exhaust wrap, our HP Turbo Kit™ features extreme temperature insulation materials, which provides greater heat protection, performance, and durability. Our complete turbo kit includes our extreme temperature turbo blanket and our HP Armor™ for your down pipe, making turbo heat shield insulation kit on the cutting edge of technology and performance. Capable of withstanding 1800°F continuous, our turbo heat shield kit is designed for street performance and even the most hardcore racing applications. Using a simple 2 piece design with comprehensive instructions, installation is simple even for the novice installer.



PART NO.	DESCRIPTION
300000	Turbo & Downpipe Heat Shield
300001	Turbo Shield Only; 9" x 19"
300002	Downpipe Shield; ½" thick x 10" W x 36" L

FEATURES:

- Capable of reducing up to 60% of radiant heat
- Reduces turbo lag, lowers under hood temperatures
- Universal kit, fits many turbo applications

Heatshield Sleeveings

Heat shield sleeves can not only keep components cool, but also keep your moving! Shielding fuel lines can prevent vapor lock and cavitation. Shielding AC lines can help to keep your drive more enjoyable even in the hottest summer months. Shielding critical wire harnesses can prevent them from premature failure, even protect them in case of a vehicle fire! Keep the oil flowing into your transmission or turbo oil line by shielding it from heat. Use the application guide below to help you select the right heat shield sleeve for you.

<p><i>Less than 1" air gap from heat source:</i> Wire loom, oil lines, coolant lines, AC lines, fuel lines, transmission lines, turbo oil lines</p>	<p>HP Thermal Sleeving, HP Hose Sleeve</p>	<p>Good</p>
	<p>Fire Shield Sleeve</p>	<p>Better</p>
	<p>Hot Rod Sleeving, Lava Tube</p>	<p>Best</p>
<p><i>With 1" air gap from heat source:</i> Wire loom, oil lines, coolant lines, AC lines, fuel lines, transmission lines, turbo oil lines, intercooler pipe, air intake</p>	<p>HP Thermal Sleeving, HP Hose Sleeving</p>	<p>Good</p>
	<p>Hot Rod Sleeve, Fire Shield Sleeve</p>	<p>Better</p>
	<p>Thermafect Sleeve</p>	<p>Best</p>

HP THERMAL SLEEVE

Use our HP Thermal Sleeve as a heat shield on your marine vessel to protect wires, fuel lines, brake lines, battery cables, EGR tubes, and more. The special weave of the sleeving allows it to expand over plugs and fittings when installing. Thermal sleeving reduces radiant heat transfer and also dissipates heat. Capable of withstanding 1000°F of continuous heat, this sleeving is ideal for protecting components that are very close to exhaust system. Fasten using Thermal-Tie™, Cool Foil Tape, or hose clamp.

RATED TO: 1100°F CONTINUOUS 2000°F INTERMITTENT



FEATURES:

- Capable of reducing up to 60% of radiant heat
- Helps to prevent vapor lock, protects wires from melting
- Bulk rolls available, diameters up to 4"

PART NO.

DESCRIPTION

200806	1" id x 6" L, 8 Pack
201012	½" id x 6' Roll
201038	3/8" id x 6' Roll
201072	1" id x 6' Roll

HOT ROD SLEEVING

Hot Rod Sleeve is thermal sleeving capable of withstanding 1200°F continuous and this nonflammable sleeve has a special weave that allows it to expand and contract over fittings and terminals. In addition, it has that old school sleeve look with modern heat shield technology. This is a perfect way to protect wires, fuel lines, brake lines, clutch lines for your custom build. Perfect for shielding fuel lines-helping to stop vapor lock, protect sensitive wire looms from close proximity heat, shield brake lines and hoses, stop clutch cables from melting. Available in 10 and 100' rolls.

PART NO.	DESCRIPTION
204011	3/8" x 10'
204012	1/2" x 10'
204014	3/4" x 10'
204018	1" x 10'
204101	3/8" x 100'
204102	1/2" x 100'
204104	3/4" x 100'
204108	1" x 100'

RATED TO: 1200°F CONTINUOUS 2000°F INTERMITTENT



FEATURES:

- Special weave allows heat sleeve expand and contract over fittings and terminals
- Prevents vapor lock on fuel lines
- Shields wire looms and fluid lines from heat
- Non-flammable
- Reflects and dissipates heat

LAVA TUBE

Lava Tube provides heat protection with that cool carbon fiber look! Due to basalts natural resistance to chemicals, Lava Tube can live in harsh environments and offer great protection. Use Lava Tube to prevent vapor lock, keep AC lines cooler, and keep your transmission lines secure from heat damage. Capable of withstanding 1200°F continuous, it works well on those pesky turbo oil lines. Accidental brief direct contact with the compressor will be no problem. Hook and loop closure makes it easy to install, just face the Velcro in the opposite direction of the heat source.

PART NO.	DESCRIPTION
281001	1/2" id x 3'
281002	1/2" id x 10'
281005	3/4" id x 3'
281006	3/4" id x 10'
281009	1" id x 3'
281010	1" id x 10'

RATED TO: 1200°F CONTINUOUS 2000°F INTERMITTENT

Coming April 2015!

FEATURES:

- Capable of reducing up to 80% of radiant heat
- Made from crushed volcanic rock
- Ideal for turbo oil lines
- Hook & loop seam makes installation easy

THERMAFLECT SLEEVE

RATED TO: 1100°F CONTINUOUS 2000°F INTERMITTENT

Shield your wiring, lines, hoses, and cables from radiant heat. Thermafect Sleeve acts as a thermal barrier capable of reflecting up to 90% of radiant heat away (requires minimum of 1" of airspace and good airflow). It is excellent to use on your fuel lines, wiring looms, air intake, intercooler pipes, and air conditioner hoses. By keeping fuel and air intake temperatures cool it helps to prevent vapor lock, improves performance, improves mileage and also reduces fuel evaporation. It weighs a fraction of what silicone coated sleeves do and it offers superior radiant heat insulation. Thermafect Sleeve withstands 1100°F of continuous radiant heat and 500°F direct heat. Available in sewn and hook & loop seams.

FEATURES:

- Capable of reducing up to 90% of radiant heat
- Helps to prevent vapor lock, lower air intake temperatures, protects wires from melting
- Also available in a hook and loop seam
- Larger diameters and rolls are available upon special request



PART NO. DESCRIPTION - Hook & Loop

281001	1/2" id x 3'
274012	1/2" id x 3' Roll
274013	1/2" id x 10' Roll
274034	3/4" id x 3' Roll
274035	3/4" id x 10' Roll
274100	1" id x 3' Roll
274101	1" id x 10' Roll
274112	1 1/2" id x 3' Roll
274113	1 1/2" id x 10' Roll
274114	1 1/4" id x 3' Roll
274115	1 1/4" id x 10' Roll
274134	1 3/4" id x 3' Roll
274135	1 3/4" id x 10' Roll
274200	2" id x 3' Roll
274201	2" id x 10' Roll
274212	2 1/2" id x 3' Roll
274213	2 1/2" id x 10' Roll
274214	2 1/4" id x 3' Roll
274215	2 1/4" id x 10' Roll
274234	2 3/4" id x 3' Roll
274235	2 3/4" id x 10' Roll
274300	3" id x 3' Roll
274301	3" id x 10' Roll
274304	3 1/2" id x 3' Roll
274305	3 1/2" id x 10' Roll
274308	4" id x 3' Roll
274309	4" id x 10' Roll
274310	4 1/2" id x 3' Roll
274311	4 1/2" id x 10' Roll
274312	5" id x 3' Roll
274313	5" id x 10' Roll

PART NO. DESCRIPTION - Sewn

281001	1/2" id x 3'
270012	1/2" id x 3' Roll
270013	1/2" id x 10' Roll
270034	3/4" id x 3' Roll
270035	3/4" id x 10' Roll
270100	1" id x 3' Roll
270101	1" id x 10' Roll
270112	1 1/2" id x 3' Roll
270113	1 1/2" id x 10' Roll
270114	1 1/4" id x 3' Roll
270115	1 1/4" id x 10' Roll
270134	1 3/4" id x 3' Roll
270135	1 3/4" id x 10' Roll
270200	2" id x 3' Roll
270201	2" id x 10' Roll
270212	2 1/2" id x 3' Roll
270213	2 1/2" id x 10' Roll
270214	2 1/4" id x 3' Roll
270215	2 1/4" id x 10' Roll
270234	2 3/4" id x 3' Roll
270235	2 3/4" id x 10' Roll
270300	3" id x 3' Roll
270301	3" id x 10' Roll
270304	3 1/2" id x 3' Roll
270305	3 1/2" id x 10' Roll
270308	4" id x 3' Roll
270309	4" id x 10' Roll
270310	4 1/2" id x 3' Roll
270311	4 1/2" id x 10' Roll
270312	5" id x 3' Roll
270313	5" id x 10' Roll

HP COLOR SLEEVE

Add cool protection to your hot rod or custom car. HP Color heat sleeves are an excellent way to protect wires, fuel lines, brake lines and more while enhancing your vehicles appearance. This special weaving of the sleeve allows it to expand over fittings when installing and return to its original size. Colored Sleeve coatings make them capable of withstanding 1200°F continuous. Rolls are 25' in length and have an adjustable inside diameter from 5/16" to 7/16". Fasten using Thermal-Tie or hose clamp. HP color heat shield sleeves are available in red, blue, yellow, black, tan, and purple.

RATED TO: 1200°F CONTINUOUS 2000°F INTERMITTENT



PART NO.	DESCRIPTION
203121	5/16" id x 25' Red
203122	5/16" id x 25' Blue
203123	5/16" id x 25' Yellow
203124	5/16" id x 25' Black
203125	5/16" id x 25' Tan/Natural

FEATURES:

- Capable of reducing up to 60% of radiant heat
- Helps to prevent vapor lock, protects wires from melting
- Special weave allows it to expand over fittings and terminals
- Size: 5/16" to 7/16" adjustable id x 25' roll
- Bulk rolls available

HP HOSE SLEEVE

Shield radiator hoses, hydraulic hoses from heat damage, increasing their life and preventing maintenance breakdowns. Use HP Hose Sleeving to insulate air intake tubes from radiant heat lowering your intake temperatures and increasing horsepower. Special coating allows this sleeving to reflect and dissipate heat. The special braid of sleeving allows it to have an expandable inside diameter from 1-3/4" to 2-3/8". Thermal Hose Sleeving is capable of withstanding 1200°F continuous. It may be fastened using Thermal-Tie™ or hose clamp.

RATED TO: 1200°F CONTINUOUS 2000°F INTERMITTENT



PART NO.	DESCRIPTION
240000	1¾" id x 100' roll
240003	1¾" id x 3' roll
240010	1½" id x 50' roll
240011	1½" id x 6' roll

FEATURES:

- Capable of reducing up to 60% of radiant heat
- Helps to prevent vapor lock, protects wires from melting
- Sleeving wall thickness is 1/16" thick

FIRE SHIELD SLEEVE

RATED TO: 500°F CONTINUOUS 900°F INTERMITTENT

Now available in master rolls, our Fire Shield Sleeve provides thermal and physical protection with its rugged silicone covering. Starting with braided fiberglass yarns in a flexible substrate; it is then coated with a high grade silicone rubber. This rugged silicone coating makes the Fire Shield Sleeve resistant to most chemicals including hydraulic fluids, oils, and fuels. The coating also makes it resistant to abrasion and fraying. You can also use Fire Shield Sleeve for brake lines, fuel lines, wiring harnesses, and cables making the master rolls a must have for any hot rod and race car shop! In addition the rugged silicone coating makes this heat shield sleeve ideal for protecting welding lines and cables. Don't be afraid of the bundle, in this case Fire Shield Sleeve allows "bundling" of wires, hoses, and cables. This sleeve is designed to reduce and dissipate heat and works great for areas where harsh environments exist that require heat shield insulation. HP Fire Shield Sleeving withstands 500°F continuous and brief intervals of 900°F, molten slag.



PART NO. DESCRIPTION - Hook & Loop

210010	Red 3/8" id x 3' Roll
210011	Red 3/8" id x 10' Roll
210012	Red 1/2" id x 3' Roll
210013	Red 1/2" id x 10' Roll
210014	Red 3/4" id x 3' Roll
210015	Red 3/4" id x 10' Roll
210016	Red 1" id x 3' Roll
210017	Red 1" id x 10' Roll
210018	Red 1 1/4" id x 3' Roll
210019	Red 1 1/4" id x 10' Roll
210020	Red 1 1/2" id x 3' Roll
210021	Red 1 1/2" id x 10' Roll
210040	Black 3/8" id x 3' Roll
210041	Black 3/8" id x 10' Roll
210042	Black 1/2" id x 3' Roll
210043	Black 1/2" id x 10' Roll
210044	Black 3/4" id x 3' Roll
210045	Black 3/4" id x 10' Roll
210046	Black 1" id x 3' Roll
210047	Black 1" id x 10' Roll
210048	Black 1 1/4" id x 3' Roll
210049	Black 1 1/4" id x 10' Roll
210050	Black 1 1/2" id x 3' Roll
210051	Black 1 1/2" id x 10' Roll
210110	Red 3/8" id x 100' Roll
210112	Red 1/2" id x 100' Roll
210114	Red 3/4" id x 50' Roll
210116	Red 1" id x 50' Roll
210118	Red 1 1/4" id x 50' Roll
210120	Red 1 1/2" id x 50' Roll
210140	Black 3/8" id x 100' Roll
210142	Black 1/2" id x 100' Roll
210144	Black 3/4" id x 50' Roll
210146	Black 1" id x 50' Roll
210148	Black 1 1/4" id x 50' Roll
210150	Black 1 1/2" id x 50' Roll

FEATURES:

- Silicone layer can be cleaned and protects against abrasion
- Helps to prevent vapor lock, protects wires from melting
- Reduces and dissipates heat
- Additional sizes up to 4" id

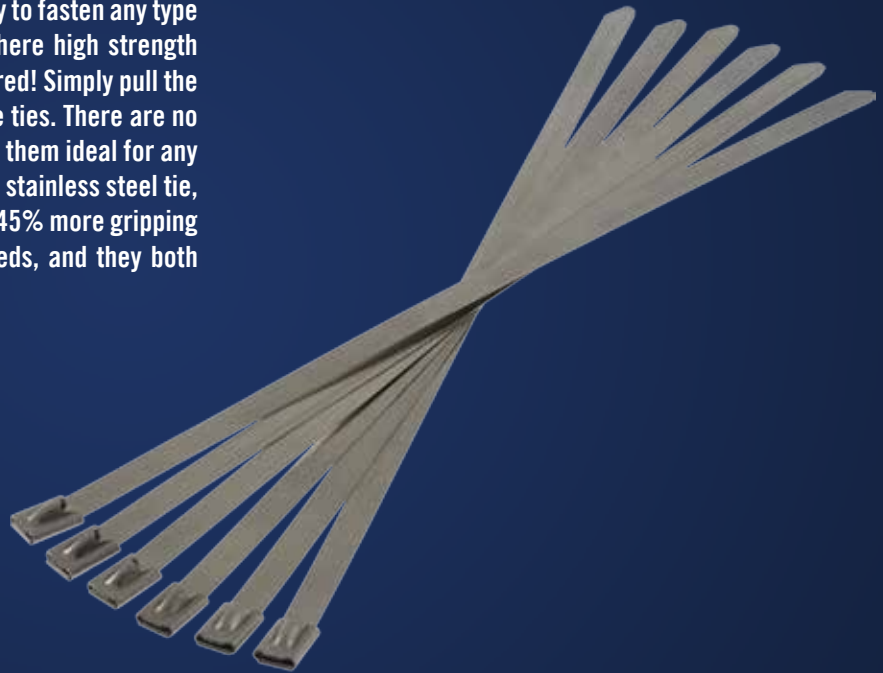
Heatshield Tape & Fasteners

Heat shield tapes reflect radiant heat away from wires, lines, cables, and hoses. These tapes will adhere to a clean surface without disassembly and can also secure other insulation as a temporary on-the-go fix to a heat problem. Stainless steel locking ties are a great way to attach high temperature insulation in high heat applications. Select from one of our American made high temperature tapes or fasteners below! Both may be used to secure the ends of heat shield sleeve, improving the sleeve's performance.

THERMAL-TIE

Our stainless steel locking ties are the easiest and best way to fasten any type of high temperature insulation, use in any application where high strength fastener is needed. Easy to use; no bands or buckles required! Simply pull the tail end through the head and tighten, just like plastic wire ties. There are no sharp edges and are easy to handle. The low profile makes them ideal for any tight fit application. We offer our standard 3/16" width 304 stainless steel tie, and our heavy duty 5/16" wide 316 stainless steel tie, with 45% more gripping power. Both come in a variety of lengths to suit your needs, and they both have a thickness of .010".

RATED TO: 1800°F CONTINUOUS 2200°F INTERMITTENT



PART NO.	DESCRIPTION
350008	3/16" W x 7.9" L; 8 pack
350009	3/16" W x 7.9" L; bag of 50
350010	3/16" W x 10" L; 6 pack
350011	3/16" W x 10" L; bag of 50
350014	3/16" W x 14" L; 4 pack
350015	3/16" W x 14" L bag of 50
350020	3/16" W x 20" L; 6 pack
350021	3/16" W x 20" L; bag of 50
350033	3/16" W x 33" L; 2 pack
350034	3/16" W, 33" L bag of 50
351001	5/16" W x 7.9" L; 8 pack
351002	5/16" W x 7.9" L; bag of 50
351003	5/16" W x 10" L; 6 pack
351004	5/16" W x 10" L; bag of 50
351005	5/16" W x 14" L; 4 pack
351006	5/16" W x 14" L; bag of 50
351007	5/16" W x 20" L; 6 pack
351008	5/16" W x 20" L; Bag of 50
351012	5/16" W x 33" L; 2 pack
351013	5/16" W x 33" L; bag of 50

FEATURES:

- No buckles or bands required
- 304 and 316 stainless steel locking ties
- The heavy duty tie features 45% more gripping power
- Installs with needle nose and diagonal pliers
- .010" thick

THERMAFLECT TAPE

RATED TO: 1100°F CONTINUOUS 2000°F INTERMITTENT

This heat shield tape reflects up to 90% of radiant heat away from wires, lines, cables, hoses, and more! It is an excellent way to insulate components without dis-assembly, or it may be used as a means to hold other thermal insulation in place. Thermafect Tape is also excellent as a quick on the go solution to heat problems. Our heat shield tape is a must have for your race track tool box! Durable cloth construction makes it longer lasting and more rugged than similar products. This reflective heat shield tape withstands 1100°F continuous radiant heat (requires minimum of 1" of airspace) and 500°F of direct contact. The reflective heat shield tape cuts easily and installation is simple with our high temperature self-adhesive backing that sticks to any CLEAN surface. Wider heat shield tape rolls available up to 150' long, minimums will apply.



PART NO.	DESCRIPTION
340001	1½" x 3' Roll
340020	1½" x 20' Roll
340250	2" x 50' Roll
340410	4" x 10' Roll
721150	12" x 50' Roll

FEATURES:

- Capable of reducing up to 90% of radiant heat
- Adhesive backing sticks to almost any clean surface
- Helps shield fuel lines, brake lines, wire looms, and more from radiant heat

HEATSHIELD ARMOR TAPE

RATED TO: 1100°F CONTINUOUS 2000°F INTERMITTENT

Heatshield Armor Tape is used to repair Heatshield Armor. It may also be used on tight seams of heat shield armor as a cosmetic improvement. The weld tape is not intended to be used to hold the Heatshield Armor in place, it is strictly used on cold side if insulation for cosmetic reasons. It can also be used to protect the ends of the exposed insulation of the HP Sticky Shield to further protect it from the elements and extend the product's life. The Heatshield Armor Tape can also be used to shield radiant heat from components. The heavy duty peel and stick adhesive will stick to any CLEAN surface.



PART NO.	DESCRIPTION
179001	1" x 39" Roll
179002	2" x 39" Roll
179003	3" x 6" Roll
179005	2" x 10' Roll
179006	1" x 10' Roll

FEATURES:

- Capable of reducing up to 90% of radiant heat
- Adhesive backing sticks to almost any clean surface
- Helps shield fuel lines, brake lines, wire looms, and more from radiant heat
- May also be used to seal or repair HP Sticky Shield

COOL FOIL TAPE

This light weight thermal insulating tape reflects radiant heat away from wires, lines, cables, and more on your motorcycle. This tape is an excellent way to insulate components without disassembly, or use it as a means to finish off other forms of thermal insulation to prevent fraying. This foil tape is very economical compared to other forms of heat protective tape, cuts easily, and has a self-adhesive backing that sticks to any clean surface. This reflective heat shield tape withstands 1000°F of continuous radiant heat and up to 400°F direct contact.

PART NO.	DESCRIPTION
340110	1" x 10'
340210	2" x 10'
340211	2" x 150'

RATED TO: 1000°F CONTINUOUS 2000°F INTERMITTENT



FEATURES:

- Capable of reducing up to 80% of radiant heat
- Adhesive backing sticks to almost any clean surface
- Helps shield fuel lines, brake lines, wire looms, and more from radiant heat
- May also be used to seal sleeving to hose or line

HP SPRING

Thermal Springs can be used to hold your turbo heat shield or manifold shield in place. Constructed of 302 stainless steel they are rugged, handle high heat and are high strength! Use needle nose pliers to stretch spring on lacing hook.

PART NO.	DESCRIPTION
352002	2 Spring kit; 2" rest, max length 5.6"

RATED TO: 1800°F CONTINUOUS 2000°F INTERMITTENT



FEATURES

- 302 Stainless construction
- Holds turbo heat shields in place
- Install with needle nose pliers

HP TIE WIRE

Secure your cool with HP Tie Wire. Use this tie wire be used to secure inlation in hostile high heat enviroments. Made from a 0.032" thick 600 Inconel wire, it can sustain the heat and keep your insulation secure. Use on exhaust and header wraps without the look of a tie. You can also use it to secure Heatshield Armor to your exhaust system.

PART NO.	DESCRIPTION
354002	5' roll
354003	10' roll

RATED TO: 1800°F CONTINUOUS 2500°F INTERMITTENT

FEATURES

- Inconel
- 0.032" diameter
- Install with needle nose pliers

Component Specific Heatshields

Add insulation to existing vehicles components and improve performance and prevent these components from failing. Air and intake shields to make you go faster and heat shields to ensure long lasting reliable operation.

I-M SHIELD

Stick on horsepower! I-M Shield™ can increase horsepower (up to 12 RWHP!). It works by shielding the intake manifold and reducing the heat radiating up from the top motor. This lowers intake manifold temperatures creating a more dense fuel and air mixture, creating more power. Think of it as an intercooler for your intake, same physics and chemistry just a different way to get there. Heavy duty adhesive will stick to any clean semi-smooth surface. Simply degrease, then clean surface, then wipe with pre-paint cleaner or isopropyl alcohol, let dry then firmly press the I-M Shield™ onto the underside of the intake manifold. Use provided edging tape to finish the install. I-M Shield™ comes pre-cut but may be trimmed with heavy scissors or utility knife! Get your I-M Shield and add some Instant-Muscle and blow the competition away.

Patent Pending

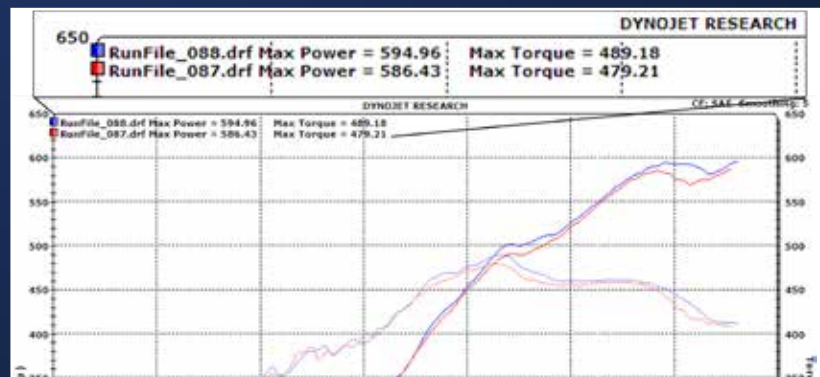
Special thanks to Paul Faessler at Paul's Automotive Engineering for being crazy enough to listen to us! We have a few other ideas in the skunk works we hope he is crazy enough to try. Dyno numbers provided courtesy of them.

Part No: 140008, Boss Intake Manifold Heat Shield -Mostly stock Boss 302 engine (with stock compression 11:1), with a Precision Turbo at 6lbs of boost

Gains: 12 RWHP, 10 ft lbs tq

Red - base line Blue - run with I-M Shield installed

RATED TO: 1100°F CONTINUOUS 2000°F INTERMITTENT



PART NO.

DESCRIPTION

140007	5.0 Coyote 2011-14
140008	Boss 5.0 Coyote 2011-2014
140009	3.7 L V6 Mustang 2011-2014
140020	LS1, LS2, & LS6 97-2007
140021	LS3, Stock Manifold
140022	LS7, Stock Manifold

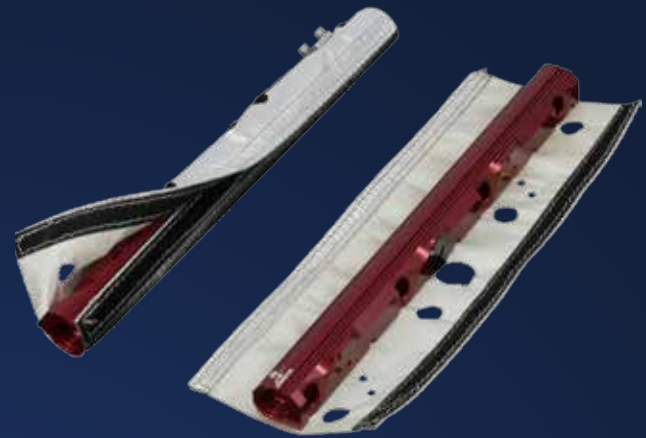
FEATURES:

- Adhesive good for 300°F
- Lowers intake temperatures
- Increases up to 12 RWHP

FR SHIELD

RATED TO: 1100°F CONTINUOUS 2000°F INTERMITTENT

FR Shields™ are engineered to prevent radiant heat from soaking the fuel rails; this will improve performance and help reduce instances of pre-ignition. So we all know the benefits of keeping the fuel headed into the motor cool, but have you ever thought about how keeping the fuel returning to your fuel cell is? The FR Shields will also help to keep the fuel returning to your fuel cell to remain cool. Over a long distance race, hot fuel returning to the fuel cell can really heat it up so keeping fuel temps down returning to the fuel cell can be almost as vital as keeping the fuel delivered to the motor cool. When the warm fuel returns to the fuel cell, it will heat up the fuel in the cell and cause it to boil off some of the chemicals that are in your fuel. This changes the chemical balance of your fuel and greatly affects your previously tuned settings. Keeping fuel cool helps to preserve the chemical balance of the fuel and keeps your vehicle operating at maximum efficiency!



PART NO.	DESCRIPTION
700201	Aeromotive®# 14103
700202	Aeromotive®# 14130
700230	Aeromotive®# 14115
700231	Aeromotive®# 14142
700250	Aeromotive®# 14146

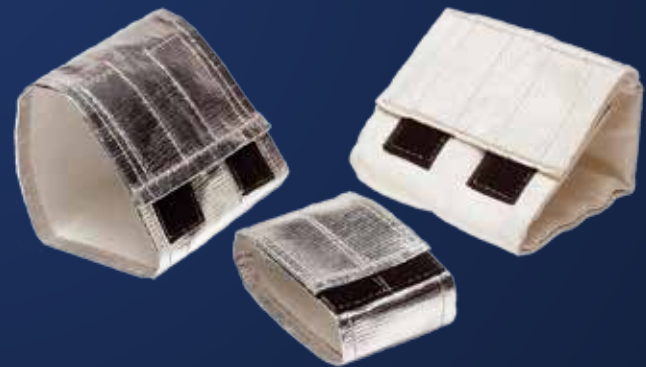
FEATURES:

- Reduces fuel temperatures
- Helps prevent pre-ignition
- Easy to install
- Custom shields available, requires fuel rail to make prototype

HP STARTER SHIELD

RATED TO: 1100°F CONTINUOUS 2000°F INTERMITTENT

HP Starter Shields, pro-long your starter's life and improve its performance! Our starter heat shields help prevent starter failure caused by overheating. Using a heat shield for the solenoid and starter can prevent the starter from having starter heat lock. Quality construction and design allow for easy installation. Simply wrap the heat shield cover around the starter and fasten with the hook and loop fasteners; starter removal is not necessary in most cases. Two different sizes are available; therefore, trimming is not necessary. Our heavy-duty starter shield is recommended in situations where there is less than 1inch of air space between the starter heat shield and the heat source. Investing a little now can save you time and money in the future!



*Installation tip: Face hook and loop seam in the opposite direction of the heat source

PART NO.	DESCRIPTION
500025	Medium Size Starters; 7" x 21¼" - double insulated
501000	Medium Size Starters; 7¼" x 21¼"
501010	Small High-Torque Starters; 3½" x 18"

FEATURES:

- Prevents starter heat soak so you are not stranded
- Easy installation, starter removal is not necessary

LAVA MOTOR MOUNT SHIELD

Heat can dry out your factory or urethane motor mounts so shield them with our Lava Motor Mount Shield. Factory mounts are designed as a rubber bladder with liquid in them to create the soft, comfy feel and they dampen motor vibration. After exposure of heat or changing the exhaust system can cause these mounts to crack and leak out the liquid creating a blown motor mount. You will notice if your engine mounts are bad by how your car turns off. If your vehicle rumbles to a stop like a diesel engine, your engine mounts are shot. The LMMS enables you to keep your "soft" mounts, preventing the vibration and rumbling associated with a solid mount replacement. Made from crush volcanic rock fiber, the mounts are naturally chemical, water, and even acid resistant, so they can operate in harsh environments! Lava Motor Mount Shields are capable of withstanding 1200°F continuous and 2000°F intermittent.

Easy installation, removal of components is not necessary in most cases, just face the hook and look seam in the opposite direction of the heat source.

Patent Pending

RATED TO: 1200°F CONTINUOUS 2000°F INTERMITTENT

Coming February 2015



FEATURES:

- Made from crushed volcanic rock
- Easy installation
- Protects mounts from heat damage
- Volcanic rock fiber chemical, water resistant

PART NO.	DESCRIPTION
503010	LS3/7 Motor Mount Shield

LAVA STARTER SHIELD

Lava Motor Mount Shields are capable of withstanding 1200°F continuous and 2000°F intermittent. Since they made from crush volcanic rock fiber, the mounts are naturally chemical, water, and even acid resistant, so they can operate in harsh environments! LSS prevent starter failures caused by overheating. Using a heat shield to protect the solenoid and starter motor can prevent the starter from having starter heat lock. In addition they can increase the life of the starter. . So go ahead and add those headers, Lava Starter Shield has you covered and keeps you going.

Easy installation, removal of components is not necessary in most cases, just face the hook and look seam in the opposite direction of the heat source.

RATED TO: 1200°F CONTINUOUS 2000°F INTERMITTENT

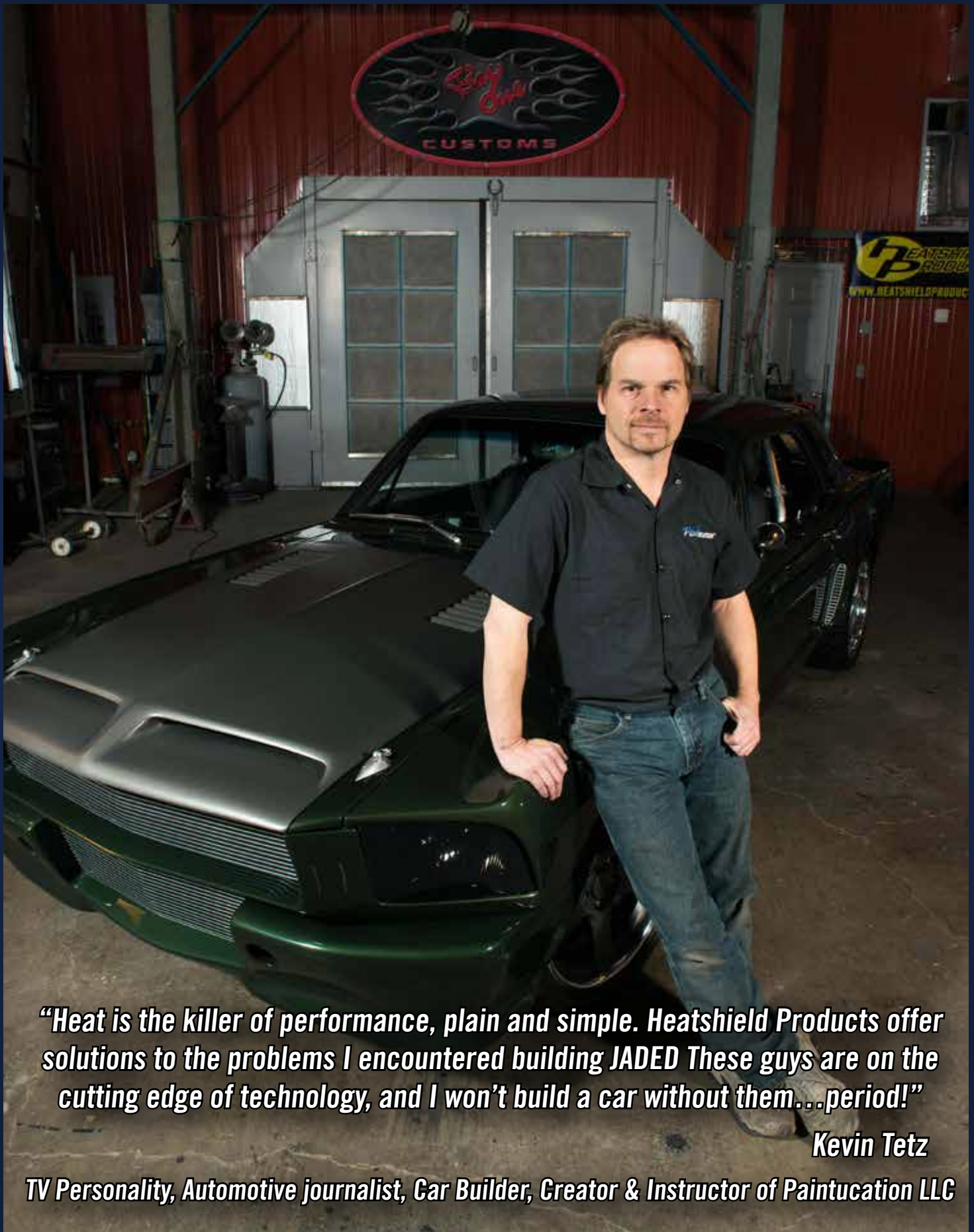
Coming February 2015



FEATURES:

- Made from crushed volcanic rock
- Easy installation
- Protects mounts from heat damage
- Volcanic rock fiber chemical, water resistant
- Not electrically conductive

PART NO.	DESCRIPTION
501070	Big body starters
501071	Small high torque starters



“Heat is the killer of performance, plain and simple. Heatshield Products offer solutions to the problems I encountered building JADED These guys are on the cutting edge of technology, and I won’t build a car without them...period!”

Kevin Tetz

TV Personality, Automotive journalist, Car Builder, Creator & Instructor of Paintucation LLC

HP FLOOR SHIELD

RATED TO: 1100°F
CONTINUOUS

2000°F
INTERMITTENT

Our HP Floor Shield is an excellent way to insulate against heat. Flexible construction makes it a great alternative to foam-padded insulating mats that do not bend as well. Easily bends and fits to contours, making it great for insulating floorboards and firewalls. Constructed of heavy duty aluminized cloth, with a ½" glass insulator, and heavy duty silicone. Face the aluminized side toward the source of heat. Installation is a cinch with the included brass grommets; simply use a screw or rivet to mount. Custom sizes available.



PART NO.	DESCRIPTION
901208	12" x 8"
902412	24" x 12"
902424	24" x 24"
903618	36" x 18"
903624	36" x 24"

FEATURES:

- Capable of reducing up to 90% of radiant heat
- Helps shield fire walls, hoods, body panels, floor boards
- Custom shields available, allow 5-7 weeks for delivery

HP LIGHT FLOOR SHIELD

RATED TO: 1100°F
CONTINUOUS

2000°F
INTERMITTENT

Light weight cost effective thermal barrier mats. Constructed of a ¼" glass pad insulator compressed between a layer of high temperature aluminized and fiberglass cloth. This is designed to reflect radiant heat away from vital components. Easily fits to contours and bends, making it great for insulating floorboards and firewalls. Face aluminized side towards source of heat. Installation is easy with the included brass grommets; simply use a screw or rivet to mount. Custom sizes available.



PART NO.	DESCRIPTION
911208	12" x 8"
912412	24" x 12"
912424	24" x 24"
913618	36" x 18"
913624	36" x 24"

FEATURES:

- Capable of reducing up to 90% of radiant heat
- Helps shield fire walls, hoods, body panels, floor boards
- Custom shields available, allow 5-7 weeks for delivery

COOL CAN SHIELD

Whether you are out on the strip, track, or in the desert, it is imperative to protect your fuel that enables your vehicle to reach maximum performance. HP Cool Can Shields are fabricated from a light-weight aluminized material that act as a UV heat shield for your fuel can or utility jug and protects its contents from solar radiation. This keeps your race fuel cool, preventing fuel evaporation and keeps the fuel's chemical balance intact. Utility jugs covered with our heat shields have cooler fuel temperatures by as much as 20F vs. unprotected sun baked fuel containers. In addition to fuel protection, the HP Cool Can Shields will also increase your can's life expectancy by 50% by preventing sun damage

RATED TO: 1100°F CONTINUOUS 2000°F INTERMITTENT



PART NO.	DESCRIPTION
900210	Scribner® 5 gal. square can heat shield
900211	VP® 5 gal. round can heat shield
900212	VP® 5 gal. square can heat shield
900213	55 gallon fuel drum heat shield

FEATURES:

- Reflects solar radiation, keeping fuel cool
- Cooler fuel temperatures by as much as 20F
- Keeps fuel's chemical balance in tact
- Prevents fuel evaporation



Ignition Heat Shields

Adding a heat shield to your spark plug boot can make sure your vehicle keeps on moving! From the mild, to custom colored heat shield boots, to the extreme stainless steel spark plug boots, design to end your ignition failure worries for good. Heatshield Products, has you covered!

Spark plug boot	Insul-Boot	Good
	Lava Boot Shield	Better
	HP Boot	Best
LSX applications	Lava Boot Shield	Best

LAVA BOOT SHIELD

Similar to our Insul-Boots, Lava Boot Shield features a no-fray cuff with a flexible dual wall high temperature basalt sleeving. The tightly braided basalt has a 1200°F working temp that assures protection from plug and wire burnout even in the most demanding applications. Lava Boots help to prevent misfires caused by plug-wire burnout, this helps prevent critical engine damage and loss in performance. In addition, they can protect your wires and boots from being damaged by excessive engine and exhaust heat. The universal design fits most boots-even 90°. We have standard sizes (1" id x 6" and 8" long) which are a great fit for most engine applications, and our 8" long 1-1/4" id Lava Boot Shields are the perfect fit to cure your LS series spark plug boot blues!

RATED TO: 1200°F CONTINUOUS 2000°F INTERMITTENT



PART NO.

DESCRIPTION

400702	1" id x 6" 2 Pack
400708	1" id x 6" 8 Pack
400712	1" id x 8" Long 2 Pack
400718	1" id x 8" Long 8 Pack
400722	1 1/4" id x 8" Long 2 Pack
400728	1 1/4" id x 8" Long 8 Pack

FEATURES:

- Reflects and dissipates heat
- Expands and stretches over irregular surfaces
- Soft, very flexible, easy to handle and install
- Designed for LS and regular applications
- Wall Thickness Over 0.050"

HP BOOT

Why take chances with a spark plug boot failure in the heat of competition? Use the ultimate spark plug boot heat shield and protect your motor and expensive plug wire sets! Featuring a 304 stainless steel and ceramic insulator construction, our HP Boots stop heat in its tracks. Put these on your race car today and forget about boot failure replacing your plug boots from heat damage again. Capable of withstanding 1800°F continuous these heat shield boots can handle all your extreme heat protection needs. Our spark plug boot heat shields come in three different configurations: straight, 45° and 90°.

RATED TO: 1800°F CONTINUOUS 2200°F INTERMITTENT



PART NO.	DESCRIPTION
420100	Straight Plug Boot Shield (1)
420101	45° Plug Boot Shield (1)
420102	90° Plug Boot Shield (1)

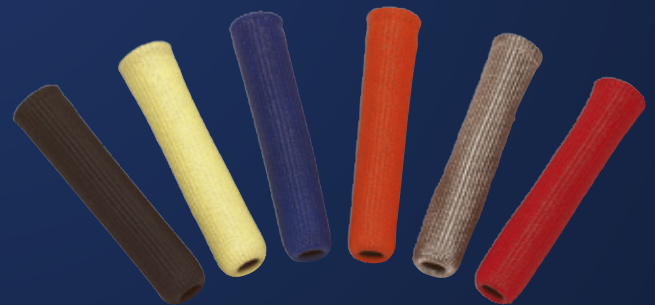
FEATURES:

- Reflects and dissipates heat
- The ultimate spark plug boot heat shield
- 304 stainless steel construction

INSUL-BOOT

Spark plug boot heat socks, protect your expensive plug wire set's performance and increase their lifetime. Insul-Boots prevent misfires caused by plug-wire burnout, this helps prevent critical engine damage and loss in performance. This boot heat shield, feature double wall construction provides superior protection. Special heat coatings allow these boot heat shields to reflect and dissipate heat. The universal design fits most boots-even 90°. Insul-Boots are available in six ceramic colors-red, blue, black, tan, yellow and orange and withstand up to 1200°F. Easy installation: place ring side on end of spark plug boot and slide the wide end towards the wire, ring side of Insul-Boot should rest between cylinder head and top of plug boot.

RATED TO: 1200°F CONTINUOUS 2000°F INTERMITTENT



PART NO.	DESCRIPTION
400200	Tan/Beige, 1" id x 6" L, 2 pack
400201	Red, 1" id x 6" L, 2 pack
400202	Blue, 1" id x 6" L, 2 pack
400203	Yellow, 1" id x 6" L, 2 pack
400204	Black, 1" id x 6" L, 2 pack
400207	Orange, 1" id x 6" L, 2 pack
400800	Tan/Beige, 1" id x 6" L, 8 pack
400801	Red, 1" id x 6" L, 8 pack
400802	Blue, 1" id x 6" L, 8 pack
400803	Yellow, 1" id x 6" L, 8 pack
400804	Black, 1" id x 6" L, 8 pack
400807	Orange, 1" id x 6" L, 8 pack

FEATURES:

- Reflects and dissipates heat
- 1" id, fits most spark plug boots even 90°
- Double wall construction
- Made in the USA

Sound Insulation

Sound deadeners are a dime-a-dozen, so what makes Heatshield Products' acoustical insulation materials so special? We do it right! While others have focused on their marketing, we have focused on getting you the right product for the right problem. Noise inside a vehicle is caused by multiple sources, so a one-product-fits-all approach won't work. We offer lightweight, high-tech products to solve your acoustical problems. That's right, light weight, you shouldn't have to add 500 lbs. to your ride to get it to quiet down. By taking a great strategy and using the right products, you can make your ride quiet without turning it into a whale!

All the TV shows, the car builders, engine builders and restoration shows that are using foil backed sound dampener are not necessarily doing the best thing for their clients? Stick-on foil dampeners work well with low to moderate frequency sound waves generated by vibrations that originate within the vehicle. They are ineffective dampeners of road noise, Road noise is a higher frequency than what dampeners are designed to suppress (with one exception). Road noise is best dampened by closed cell foam products that include a hard vinyl barrier which functions as a sound barrier not a sound dampener.

Fire wall, floor pan, transmission tunnel, wheel wells, trunk	db Skin, db Suppressor	Good
	db Sniper	Better
	1 coat db Skin & db Sniper or db Armor	Best
Doors	db Suppressor	Good
	db Shield, db Super Suppressor	Better
	db Skin, 1 coat on outer door skin or db Armor and db Shield on door panel	Best
Roof	db Suppressor	Good
	db Skin, db Super Suppressor	Better
	1 coat db Skin & db Suppressor or db Armor	Best

db ARMOR™

db Armor™ is the forerunner technology you have been waiting for! Lightweight, easy to install it features a 6mil dampening aluminum layer is offers 3x the dampening capability of most products and 1.5x as some extreme rated dampeners with a mere 0.052" thickness. 30% thinner, 20% lighter and superior sound deadening capability!

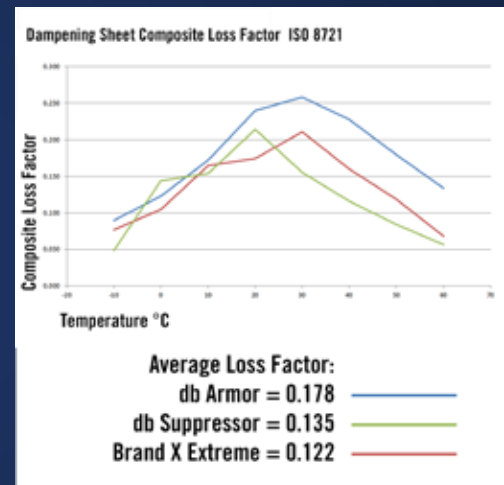
With acoustical energy loss capabilities close to a sound barrier, db Armor™ is the ultimate stick on sound dampener. Using db Armor to steel, plastic, and fiberglass surfaces will decrease structural resonance, producing a tighter, quieter and more comfortable ride! Don't hesitate; order your db Armor™ today.



FEATURES:

- Lightweight, weighs 20% less than leading dampener with superior dampening ability
- Lightest weight material with the thickest aluminum layer currently available
- Weight: 0.39 lbs. ft/2
- 0.052" thick

PART NO.	DESCRIPTION
040012	21.5" x 39" 2 Pack
040013	21.5" x 39" 5 Pack
040014	21.5" x 39" 10 Pack



db SUPPRESSOR™

db Suppressor™ is a technologically advanced sound insulator that offers superior damping performance at a reduced weight over competitor's products. It weighs 10% less than other products, yet possesses superior sonic energy loss capacity. db Suppressor™ assists in reducing automotive interior noise levels and improves performance from auto sound systems, by limiting panel resonance (vibration). db Suppressor™ uses sheer force to reduce or eliminate vibration. db Suppressor™ features a lightweight butylene layer that is bonded to a 4 mm anodized aluminum sheet. The butylene layer is loaded with a proprietary blend of ceramic micro-spheres which reduce the overall weight of the product and increase its resistance to heat.

The adhesive layer is very aggressive and the bond will actually improve over time. db Suppressor™ can be removed and re-installed easily. If you try re-installation with a competitive material, you will destroy the product while trying to remove it.



FEATURES:

- Lightweight, weighs 10% less than leading dampener with superior dampening ability
- Can be removed and re-installed easily
- Weights 0.48 lbs ft/2
- 0.060" thick

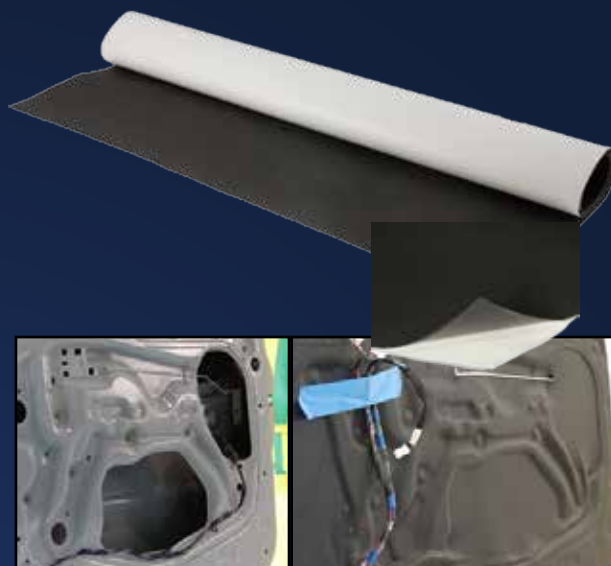
PART NO.	DESCRIPTION
040002	12" x 36" 5 pack
040003	12" x 36" 10 pack
040004	12" x 36" 20 pack

db SHIELD™

db Shield™ is a thin, lightweight, and highly mold-able vibration damping material that consists of vinyl-based sheets. db Shield™ is designed to mold and conform to irregular surfaces to achieve 100% bond, maximizing damping performance. db Shield™ will stretch up to 40% to make an irregular surface appear as if it has been dipped in plastic. It has twice the damping and less than half the weight of asphalt damping materials and has the ability to handle continuous temperatures up to 250°F.

db Shield™ consists of a proprietary component blend in a lightweight vinyl carrier. Its product has been engineered to convert structural resonance (vibration) into low-level heat through friction. The friction is created from the proprietary component blend coming in contact with each other as the substrate (or panel) vibrates.

db Shield™ is ideally suited to create or replace a vapor barrier behind an interior door panel. db Shield™ is much more dense and rugged than flimsy plastic provided by many OEM's. This makes db Shield™ far more capable of blocking airborne sound that normally enters the vehicle via the doors. db Shield™ also blocks speaker back-wave and prevents an acoustical short circuit. This improves performance of audio systems by preventing the conversion of sound energy into vibration energy giving your speakers cleaner, crisper sound.



FEATURES:

- Twice the damping and less than half the weight of asphalt damping materials
- Heat moldable, giving a “dipped in plastic look”
- Paintable for the ultimate OEM look
- 0.045” thick Vinyl Vibration Damping Sheet

PART NO.	DESCRIPTION
040051	37” x 54 (usually covers 1 set of doors)
040052	37” x 54” 2 pack

db SKIN™

db Skin is a water-based, air-curing, sprayable, vibration damping compound that bonds well to sheet metal, wood, plastic and fiberglass surfaces. Its proprietary blend of silica-mica and ceramic suspended in advanced chemical binder create friction greatly reduces structural resonance and vibration. db Skin effectively dampen vibration in a variety of substrates (panels) over a wide frequency range (10Hz - 40KHz).

db Skin allows you to cover large surface areas very quickly when using a spray gun, brush, or roller. When the product is wet it is purple, as it cures it will change to black. Best suited for cars where the interior is gutted, it can also be used on smaller areas, such as outer door skins and above the headliner. db Skin is also used to improve the performance of speaker enclosures of all types, and is commonly used on the inside of outer body panels. In wood enclosures, the db Skin will soak into the wood and seal up the pores, seams, and gaps between the panels give an addition 3db. db Skin will also damp fiberglass and plastic enclosures extremely well. When db Skin cures, it creates an impedance mismatch that results in an increase in overall output by 1 to 3 db, that's almost doubling the amp power! No special tools are required to install db Skin; however, a “shutz” spray gun will save a significant amount of install time. db Skin may also be applied with a paint brush or roller. db Skin cleans up easily with warm water before it has dried.



FEATURES:

- Sprayable or applied with brush
- Lightweight alternative to asphalt products
- Covers large surface areas quickly
- Increases performance of speaker boxes

PART NO.	DESCRIPTION
040101	1 Gal coverage approx. 30 ft ²
040102	5 Gal coverage approx. 150 ft ²
040103	2 Gal coverage approx. 60 ft

db SNIPER™

It aims, it shoots, and it kills sound! At only ¼" thick, db Sniper™ is the premier product to block road noise in your ride! db Sniper™ is a composite product engineered to block and reflect high-energy, low-frequency road noise, an airborne sound, across a wide frequency range of 200 MHz or lower. db Sniper™ consists of a closed cell neoprene foam layer that is bonded to a dense vinyl barrier.

The neoprene foam layer creates an "air-spring" that floats the dense layer of vinyl. This air-spring allows for the proprietary vinyl to reflect, or "return fire" of the high energy sound waves. It also prevents the same sound energy from passing through the dense layer; it creates a "floating sound shield". The foam layer doesn't absorb or filter sound; it is far too thin to absorb high-energy, low-frequency sound waves. Question and verify any company promoting a foam barrier in this way.

Use db Sniper™ on the floor pan, firewall, rear deck, rear panel of truck cab, and on the trunk/cargo area. Install by "aiming" the foam layer onto the vehicle's surface (i.e. towards the sound source), and dense vinyl side facing up. db Sniper™ performs best when it can be used on flat panels, or panels with gentle curves and bends.

A common, huge misconception is that vibration-dampening sheets are designed to block road noise, an airborne sound problem. Even though using dampening sheets can yield a reduction in the overall noise, it requires 4-6 layers of material to equal the performance of db Sniper™. Not only would this increase the cost and installation time, it dramatically increases the amount of weight added to the vehicle. Why would you bog down your ride with unnecessary weight? Save yourself a lot of time, money, and hassle by using a dedicated "floating" barrier material like db Sniper™.



PART NO.	DESCRIPTION
040021	37" x 54"
040022	37" x 54" 2 pack

FEATURES:

- Stops road noise, equivalent to 4-6 layers of dampening sheet
- "Sonic shield wall" reflects and stops sound waves
- Thickness: 0.250"
- Weight: 11b ft²

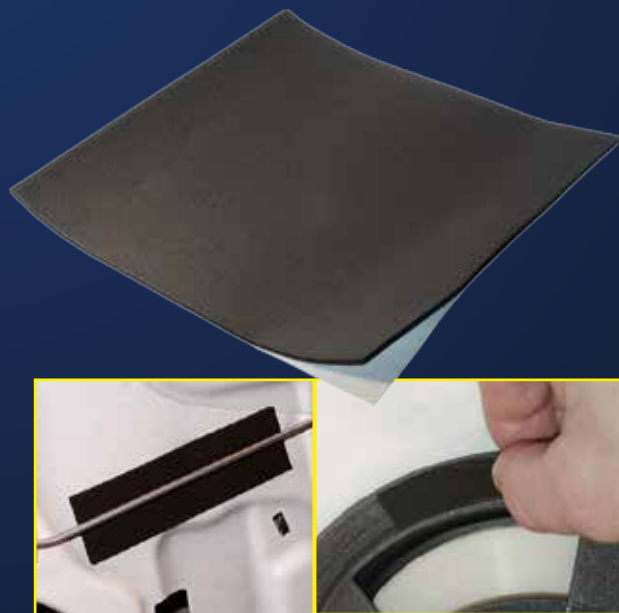
db GASKET™

Is that rattle in your ride rattling around in your head at night? Use our db Gasket™ to keep your mind at ease. db Gasket is a thin, closed-cell urethane foam designed to act as a buffer (or gasket) between independently vibrating components to eliminate squeaks, rattles, and buzzes. db Gasket™ eliminates these noises giving your ride a pure "thunderous experience" for the people you pass! It is ideal for speaker installations, providing a crisper cleaner sound! It can also be used to help vibrating linkage rods for door handles and locking mechanisms. db Gasket™ features an aggressive, modified acrylic adhesive it is impervious to water and harsh chemicals, which makes it suitable for exterior applications. db Gasket™ can be used like an OEM product for license plate brackets, tail lights, head lights, window regulator mounts, bumper mounts, and more! Now there is no excuse for your hot rod or custom to be a "rattle rod"!

PART NO.	DESCRIPTION
040060	10" x 10" 4 pack

FEATURES:

- Highly water and chemical resistant
- Aggressive adhesive
- Lightweight
- Thin, .125" thick
- Quiets linkage



HP WELDING PILLOW

Weld in comfort and prevent fatigue with our HP Welding Pillow. Featuring an outer layer of our HP Weld Mat, these pillows are abrasion resistant and impervious to liquid, giving them a long life. They also provide protection against metal splashes, flames, sparks and ultraviolet radiation! The inner nonflammable fiberglass insulation provides the comfort. For welding and manufacturing you can improve worker efficiency by reducing fatigue. They also help steady your hand because of the increased comfort and less straining.

RATED TO: 500°F
CONTINUOUS

SLAG
INTERMITTENT



PART NO.	DESCRIPTION
932001	10" x 10" x 3"
932002	12" x 18" x 3"
932004	24" x 36" x 3"

FEATURES:

- Less fatigue = better welds
- Great for under vehicles repairs
- Rejects sparks, oil, chemicals
- Keeps production going
- Excellent for fabrication shops

PINKY ARMOR

Tig welder's rejoice! After extensive testing we have developed the ultimate heat shield for TIG welding. It allows you to rest and move freely without snagging. In addition to keeping your pinky and edge of your hand cool, it reduces fatigue. This allows you to be more productive, making better welds, and allowing you to stay in the "dime zone" longer. Simply slide the shield on your pinky over your glove strap it over your wrist with protected velcro strap and away you go!

RATED TO: 1800°F
CONTINUOUS

2200°F
INTERMITTENT

**Coming February
2015**

PART NO.	DESCRIPTION
932021	Black

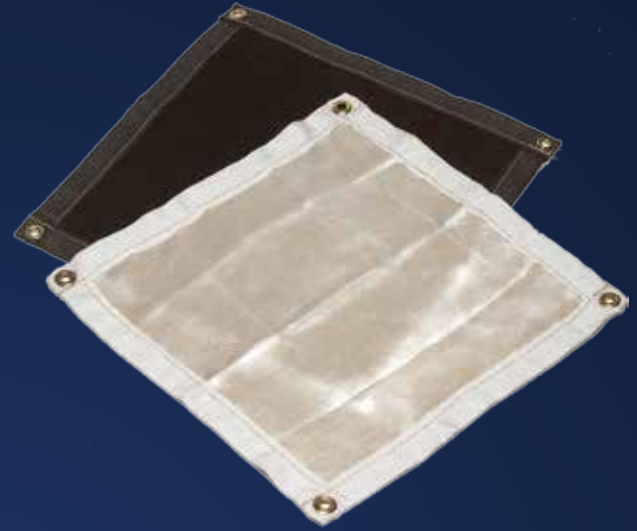
FEATURES:

- Protects pinky and side of hand
- Less fatigue = better welds
- Slides over glove
- Velcro strap for wrist

HP TORCH BLANKET

Protect your critical parts while making repairs on site with the HP Torch Blanket. This product makes it convenient to make repair welds on your industrial equipment or vehicle without disassembly. This can reduce time by not having to shut down production or return to shop, saving time during race preparation. These blankets can even be used as blaze barriers for welding pipes or tubes together. Our original torch blanket is made of silica and our new torch blankets are made of our HP Stealth Felt which makes them durable and long lasting vs. traditional welding blankets (up to 10X compared to leather blankets). We have included brass grommets at the corners on some of the welding blankets to make it handy to mount anywhere a quick repair is needed. You can even use these blankets as a blaze barrier when sweating or welding pipes around the house or on the construction site, some even have a keyhole. Our HP Felt Blankets are black with a dark gray binder. All HP Torch Blankets are capable of withstanding 1800°F continuous. Custom welding blankets and blaze barriers available.

RATED TO: 1800°F CONTINUOUS 2200°F INTERMITTENT



PART NO.	DESCRIPTION
931000	18" x 18" Tan
931018	18" x 18" Black with grommets
931019	18" x 18" Black
931020	18" x 18" Black with center key hole
931025	26" x 36" Black
931053	53" x 72" Black

FEATURES:

- Protects components while repairs are made
- Okay for torch to touch blanket
- Keyhole blanket great for repair pipes

HP WELDING JACKET

Our HP Welding Jacket is constructed from a rugged high temperature cloth. Our welding jacket is rugged enough to protect you, yet flexible enough for you to move around and get the job done. Made from our HP Weld Mat, they are abrasion resistant and impervious to liquid, giving them a long life. Open back design allows the jacket to breathe while protecting the welders front and shoulders from slag! They also provide protection against metal splashes, flames, sparks and ultraviolet radiation! HP Welding Jackets are noncombustible.

RATED TO: 500°F CONTINUOUS SLAG INTERMITTENT



PART NO.	DESCRIPTION
933001	XL
933002	XXL
933003	XXL

FEATURES:

- Prevents welding fatigue and injuries, by making welder comfortable
- Will reject sparks, oil, chemicals
- Open back design



HEATSHIELD PRODUCTS

American made since 1985



Heatshield Products, Inc.
www.heatshieldproducts.com
info@heatshieldproducts.com
(760) 749-0441

Facebook: #HeatshieldProducts

Instagram: #HeatshieldProducts

Twitter: @HeatshieldProds

Google+: +HeatshieldProducts

Find your local dealer or online retailer: www.heatshieldproducts.com/buy



©1985-2015 Heatshield Products, Inc.