



# The Nankang Story

## **50 Years of Industrious Work, all Dedicated to Motoring Safety**

Nankang is proud of our quality products produced over the years. Yet we never cease to pursue further excellence in both our R&D and manufacturing processes.

Nankang Rubber Tire's heritage runs deep; having the longest history amongst the tyre manufacturers in Taiwan. For 50 years, guided by our corporate motto, "Integrity, Pragmatism, and Innovation", we have persisted in creating performance and growth. In response to increasingly discerning market demands, we have strived aggressively towards our goals of "product innovation with R&D, differentiation from competition, product quality upgrading, customer satisfaction, after-sale service and professional management", in order to offer more and more innovative products.

## **50 Years of Honour and Recognition, Winning Numerous Awards with our Effort in R&D**


Over the past 50 years, our continuous efforts in keeping up with the advancement of technology and product quality control have proven to be fruitful not only in developing many innovative and durable products, but also bringing us numerous global awards in Quality Assurance.

## **50 Years of Business Splendor, High Time to Turn a New Page**

Nankang Rubber Tire's corporate logo has been in use for more than 50 years. Facing increasingly fierce competition from the global tyre industry and considering the trend of corporate reforms, in 2010 Nankang embarked upon a review of its corporate identity system "CIS". Through this new project, we aim to build a new Nankang Tire brand image, of world standard. Being able to keep up with the times, the company will proudly move on to the next splendid century of its corporate history.

## **Mastering the Colourful World Stage with a New CIS**

Firmly established in Taiwan for 50 years under the guidance of her company motto of "integrity, pragmatism and innovation", Nankang Tire has never ceased to move ahead. Similarly, she commands the ambition to aggressively expand her business with global perspective.

A passionate yet steadfast symbol, the , represents Nankang Rubber Tire's sustainable business philosophy, and her corporate spirit. Care for the customer is always of paramount importance.

The CIS employs a duo colour combination of red and black.

The Red color expresses Nankang's corporate spirit of high passion, respect for customers, energy and vitality.

The Black color highlights the strength and stability of her tyre business and represents an image of generosity, grandeur, professionalism and trustworthiness.

Whether it be for cruising the highway, striding over an icescape, or conquering a dilapidated off-road track, for 50 years, Nankang Tire has offered drivers safe innovative motoring, with a spirit as unbreakable as the tyres she manufactures.

From her humble beginnings, Nankang has advanced across five continents, and covered more than 100 countries globally. From tyre industry leader in Taiwan, Nankang is now steadily driving her way onto the global stage with unlimited opportunity.



## **A Smooth Ride All Over the World**

It is Nankang Tire's goal to have a smooth ride ("free your way") towards the world stage. For 50 years, the company has been continuously moving forward under her principles of "integrity, pragmatism, and innovation", allowing her to shine on the world stage. In the future, with extraordinary product quality, Nankang's products will certainly have a "smooth ride" in markets all over the world.

## **Carefree Access**

With their superior quality, Nankang tyres have been popularly sold worldwide. For Nankang, the driving experience and safety are paramount when it comes to its tyre products. Going forward with our ever-improving quality, we have even greater hopes of sharing the Nankang "free your way" spirit with many more motorists, right across the world.

# Our Commitment to the Environment

Nankang realizes the fact that we are a part of the Earth's Eco system, and so we take pride in our responsibility to provide a better environment for future generations. Our commitment is evident right throughout the manufacturing process. Our raw materials are formulated to lower pollution emissions. As such, our suppliers are required to provide raw materials which conform to all relevant internationally recognized environmental regulations.



## **Conformity to Regulations with HA (High Aromatic)-Oil Free Formula for VOC Reduction**

Nankang tire compounds are formulated to meet the European Union's regulations on environmental protection which came into force in 2010. HA-oil free compounds are used across the entire product line. In addition, necessary measures are taken to reduce volatile organic compound ("VOC") generation in our manufacturing, thus eliminating further pollution in the process.

## **Extended Tire Life for Better Value and a Better Environment**

Extending the durability of tires not only creates higher economic value for drivers, but also reduces the impact of scrapped tires upon the environment. To achieve this, Nankang uses highly structured chemical agents to lessen tread wear, and unique additives designed to slow the tire aging process. High pressure-bearing materials are applied, to enable tires to be properly inflated. While value and safety are essential to customer satisfaction, product quality and performance are never compromised.

## **Lower Rolling Resistance for Fuel Saving and Carbon Dioxide Emission**

Fuel consumption and carbon dioxide emissions are direct functions of a tire's rolling resistance. Lowering rolling resistance is one of the top priorities for our product development. High dispersible silica and unique cross linking agents are applied in our formula to achieve the stable integration of natural, synthetic rubber and silica, which leads to the advanced result of lower rolling resistance, less heat generation and better grip performance.

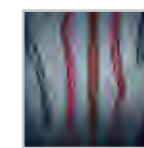
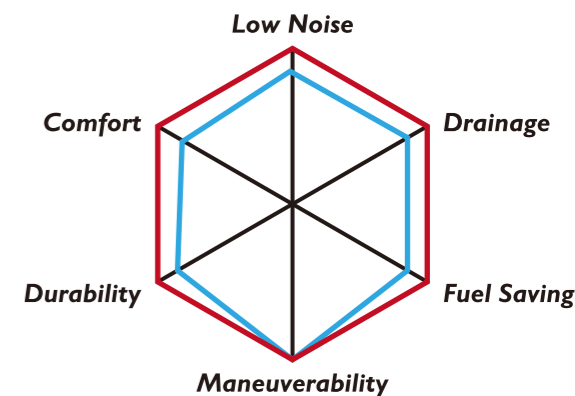
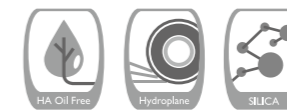




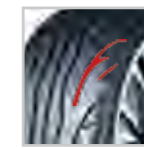
*Sportnexus*

*Sportnexus*

# NS-2R



The three main circumferential grooves on central tread can improve drainage efficiency and wet handling performance.



Unique groove wall angle prevents excessive stress massing to reduce irregular treadwear effectively.



Continuous tread shoulder design enhances tire stiffness and ensure cornering precision.



**113%**

The optimized tread width has 13% wider contact patch than a regular tire, and increases stability while driving at high speed.



Large blocks on tread shoulder upgrade stiffness and handling performance.

## TRACK VERSION

Series	Inch	Size	Load Index	Speed Index	Rim Width (Inch)	OD (mm)	SW (mm)	EU TIRE LABEL			
								RRC	Wet Grip	NoiseValue (dB)	Noise Class
35	18	265/35ZR18	97(XL)	Y	9.5	643	271	F	B	73	2
	18	255/35ZR18	94(XL)	Y	9.0	635	260	F	B	73	2
	18	235/40ZR18	95(XL)	Y	8.5	645	241	F	B	72	2
40	18	225/40ZR18	92(XL)	Y	8.0	637	230	F	B	71	2
	17	255/40ZR17	94	W	9.0	636	260	F	B	73	3
	17	235/40ZR17	90	W	8.5	620	241	N/A*			
45	17	235/45ZR17	97	W	8.0	644	236	N/A*			
	17	225/45ZR17	94(XL)	W	7.5	634	225	F	B	71	2
	17	215/45ZR17	91(XL)	W	7.0	626	213	F	B	71	2
50	16	205/45ZR16	87(XL)	W	7.0	590	206	N/A*			
	15	195/50ZR15	86(XL)	W	6.0	577	201	F	B	71	2
	15	165/50R15	73	V	5.0	547	170	N/A*			
55	16	205/55ZR16	91	W	6.5	632	214	F	B	71	2
	15	195/55ZR15	89(XL)	W	6.0	595	201	F	B	71	2
	14	165/55R14	72	V	5.0	538	170	N/A*			

## STREET VERSION

Series	Inch	Size	Load Index	Speed Index	Rim Width (Inch)	OD (mm)	SW (mm)	EU TIRE LABEL			
								RRC	Wet Grip	NoiseValue (dB)	Noise Class
35	18	265/35ZR18	97(XL)	Y	9.5	643	271	F	B	73	2
	18	255/35ZR18	94(XL)	Y	9.0	635	260	F	B	73	2
	18	235/40ZR18	95(XL)	Y	8.5	645	241	F	B	72	2
40	18	225/40ZR18	92(XL)	Y	8.0	637	230	F	B	71	2
	17	255/40ZR17	94	W	9.0	636	260	F	B	73	3
	17	235/40ZR17	90	W	8.5	620	241	N/A*			
45	17	235/45ZR17	97	W	8.0	644	236	N/A*			
	17	225/45ZR17	94(XL)	W	7.5	634	225	F	B	71	2
	17	215/45ZR17	91(XL)	W	7.0	626	213	F	B	71	2
50	16	205/45ZR16	87(XL)	W	7.0	590	206	N/A*			
	15	195/50ZR15	86(XL)	W	6.0	577	201	F	B	71	2
	15	165/50R15	73	V	5.0	547	170	N/A*			
55	16	205/55ZR16	91	W	6.5	632	214	F	B	71	2
	15	195/55ZR15	89(XL)	W	6.0	595	201	F	B	71	2
	14	165/55R14	72	V	5.0	538	170	N/A*			

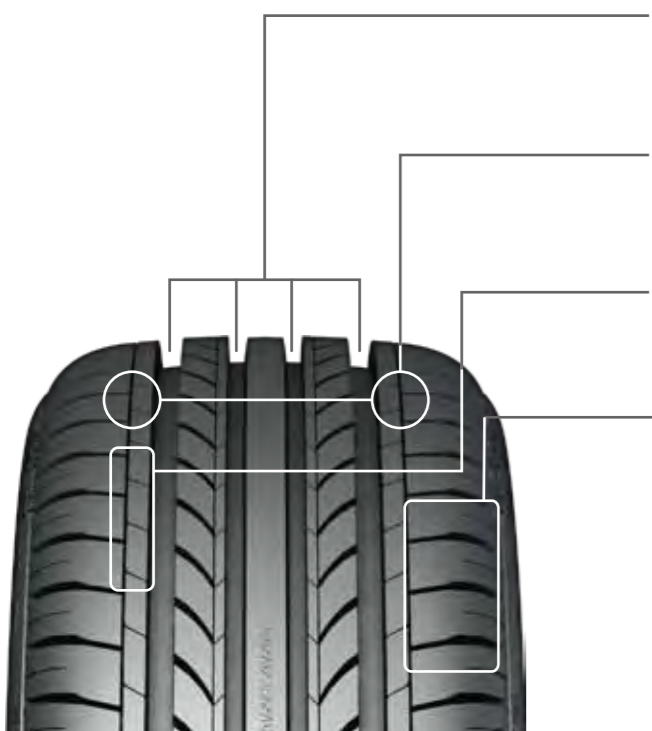
N/A=Values are not available at the time of publication

Exploring the limits

Sportmax



# NS-20



### Straight Wide Grooves:

4 straight wide grooves enhance tire drainage efficiency and maneuverability on wet road condition.

### Sub-Straight Grooves:

The two sub straight grooves on tire shoulders not only assist the main grooves drainage efficiency, but reduce uneven tread wear.

### Tiny Lateral Kerfs:

The kerfs can reduce pattern noise caused by tire rolling.

### Sipes:

Sipes on tire shoulders reduce tire block rigidity, lower the noise from road, and increase comfort ability.

NANKANG design team creates NS-20 with 5 pitches computer simulation technology, and new pitch sequence proves to decrease noise at high speed.

### Brand New Compound:

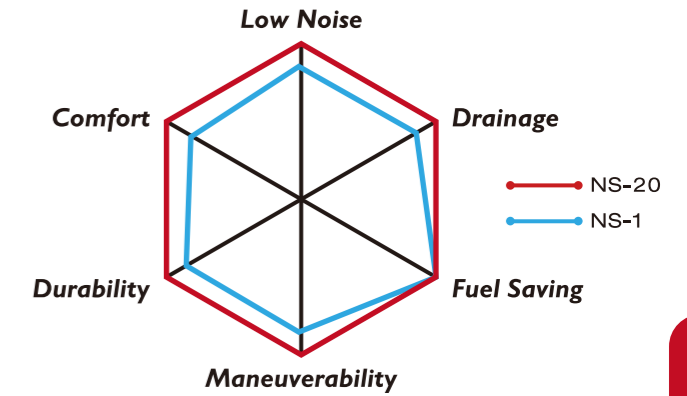
New silica compound makes NS-20 have excellent grip ability on both dry and wet road surface.

## Performance Comparison between NS-20 and NS-1

The new generation product line, NS-20, adopts brand new pattern design philosophy to curb noise effectively.

### NS-20 WET ROAD BRAKING TEST

<b>NS-20</b>	18.8(m)
<b>Conventional Tire</b>	22.2(m)



Series	Inch	Size	Load Index	Speed Index	Rim Width (Inch)	OD (mm)	SW (mm)	EU TIRE LABEL			
								RRC	Wet Grip	NoiseValue (dB)	Noise Class
30	24	245/30ZR22	95(XL)	W	8.5	707	248	E	C	72	2
	22	225/30ZR22	87(XL)	W	8.0	695	230	N/A			
	22	285/30ZR20	99(XL)	Y	10.0	680	290	E	C	72	1
	22	275/30ZR20	97(XL)	Y	9.5	674	278	E	C	72	2
	20	255/30ZR20	92(XL)	Y	9.0	662	260	E	C	72	2
	20	245/30ZR20	95(XL)	Y	8.5	656	248	E	C	72	2
	20	235/30ZR20	88(XL)	Y	8.5	650	242	E	C	72	2
	20	225/30ZR20	85(XL)	W	8.0	644	230	E	C	72	2
	20	215/30ZR20	82(XL)	W	7.5	638	218	F	C	72	2
	20	295/30ZR19	100(XL)	Y	10.5	661	301	N/A			
	20	285/30ZR19	98(XL)	Y	10.0	655	290	E	C	72	1
	19	275/30ZR19	96(XL)	Y	9.5	649	278	E	C	72	2
19	275/30ZR19	92	Y	9.5	649	278	N/A				
19	265/30ZR19	93(XL)	Y	9.5	643	271	E	C	72	2	
19	255/30ZR19	91(XL)	Y	9.0	637	260	E	C	72	2	
35	18	275/35ZR20	102(XL)	Y	9.5	700	278	E	C	74	3
	18	255/35ZR20	97(XL)	Y	9.0	686	260	E	C	72	2
	20	245/35ZR20	95(XL)	Y	8.5	680	248	E	C	72	2
	20	235/35ZR20	92(XL)	W	8.5	672	241	E	C	72	2
	20	225/35ZR20	90(XL)	Y	8.0	666	230	E	C	72	2
	20	275/35ZR19	96	Y	9.5	675	278	E	C	72	2
	20	265/35ZR19	98(XL)	Y	9.5	669	271	E	C	72	2
	19	255/35ZR19	96(XL)	Y	9.0	661	260	E	C	72	2
	19	245/35ZR19	93(XL)	Y	8.5	655	248	E	C	72	2
	19	235/35ZR19	91(XL)	Y	8.5	647	241	E	C	72	2
	19	225/35ZR19	88(XL)	Y	8.0	641	230	N/A			
	19	215/35ZR19	85(XL)	Y	7.5	633	218	E	C	72	2
19	275/35ZR18	95	Y	9.5	649	278	E	C	72	2	
18	275/35R18	95	H	9.5	649	278	E	C	72	2	
18	265/35ZR18	97(XL)	Y	9.5	643	271	E	C	72	2	
18	265/35R18	93	H	9.5	643	271	E	C	72	2	
18	255/35ZR18	94(XL)	W	9.0	635	260	E	C	72	2	
18	255/35R18	94(XL)	H	9.0	635	260	E	C	72	2	
18	245/35ZR18	92(XL)	Y	8.5	629	248	E	C	72	2	
18	245/35R18	92(XL)	H	8.5	629	248	E	C	72	2	
18	225/35ZR18	87(XL)	Y	8.0	615	230	E	C	72	2	
18	225/35R18	87(XL)	H	8.0	615	230	E	C	72	2	
18	215/35ZR18	84(XL)	Y	7.5	607	218	F	C	72	2	
18	215/35R18	84(XL)	H	7.5	607	218	F	C	72	2	
17	205/35R18	81(XL)	H	7.5	601	211	F	C	72	2	
17	185/35R17	82(XL)	V	6.5	562	188	F	C	72	3	
20	165/35R17	75(XL)	V	6.0	548	170	F	C	72	3	
40	19	245/40ZR20	95	Y	8.5	704	248	E	C	72	3
	19	275/40ZR19	101	Y	9.5	703	278	E	C	72	2
	19	255/40ZR19	100(XL)	Y	9.0	687	260	E	C	72	2
	19	245/40ZR19	98(XL)	Y	8.5	679	248	N/A			
	18	245/40ZR19	98(XL)	W	8.5	679	248	E	C	72	2
	18	225/40ZR19	93(XL)	Y	8.0	663	230	E	C	72	2
	18	245/40ZR18	97(XL)	W	8.5	653	248	E	C	72	2
	18	245/40R18	97(XL)	H	8.5	653	248	E	C	72	2
	18	235/40ZR18	95(XL)	W	8.5	645	241	E	C	72	2
	18	235/40R18	95(XL)	H	8.5	645	241	E	C	72	2
	18	225/40ZR18	92(XL)	W	8.0	637	230	E	C	72	2
	18	225/40R18	92(XL)	H	8.0	637	230	E	C	72	2
17	215/40ZR18	89(XL)	W	7.5	629	218	E	C	72	2	
17	215/40R18	89(XL)	H	7.5	629	218	E	C	72	2	
17	255/40ZR17	94	W	9.0	636	257	E	C	72	2	
17	255/40R17	94	V	9.0	636	260	E	C	72	2	
17	245/40ZR17	91	W	8.5	628	248	E	C	72	3	
17	245/40R17	91	V	8.5	628	248	E	C	72	3	
17	235/40ZR17	90	W	8.5	620	241	E	C	72	3	
17	235/40R17	90	V	8.5	620	241	E	C	72	3	

Series	Inch	Size	Load Index	Speed Index	Rim Width (Inch)	OD (mm)	SW (mm)	EU TIRE LABEL			
								RRC	Wet Grip	NoiseValue (dB)	Noise Class
40	17	215/40ZR17	87(XL)	W	7.5	604	218	E	C	72	2
	17	215/40R17	87(XL)	V	7.5	604	218	E	C	72	2
	17	205/40ZR17	84(XL)	W	7.5	596	212	F	C	72	2
	17	205/40R17	84(XL)	H	7.5	596	212	F	C	72	2
	17	205/40R17	84(XL)	V	7.5	596	212	F	C	72	2
	17	165/40R17	75(XL)	V	6.0	564	170	F	C	72	3
	16	215/40R16	86(XL)	V	7.5	578	218	E	C	72	2
	16	205/40R16	83(XL)	V	7.5	570	212	F	C	72	2
	16	165/40R16	73(XL)	V	6.0	538	170	F	C	72	3
	19	245/45ZR19	98	Y	8.0	703	243	E	C	72	3
	18	255/45ZR18	99	Y	8.5	687	255	E	C	72	2
	18	245/45ZR18	100(XL)	Y	8.0	677	243	E	C	72	2
18	245/45R18	100(XL)	H	8.0	677	243	E	C	72	2	
18	225/45ZR18	95(XL)	W	7.5	659	225	E	C	72	2	
18	225/45R18	95(XL)	H	7.5	659	225	E	C	72	2	
17	245/45ZR17	99(XL)	Y	8.0	652	243	E	C	72	2	
17	245/45R17	95	V	8.0	652	243	E	C	72	3	
17	245/45R17	95	H	8.0	652	243	E	C	72	3	
17	235/45ZR17	97(XL)	W	8.0	644	236	E	C	72	2	
17	235/45R17	97(XL)	V	8.0	644	236	E	C	72	2	
17	225/45ZR17	94(XL)	W	7.5	634	225	E	C	72	2	
17	225/45R17	94(XL)	V	7.5	634	225	E	C	72	2	
17	215/45ZR17	91(XL)	W	7.0	626	213	E	C	72	2	
17	215/45R17	91(XL)	V	7.0	626	213	E	C	72	2	
17	215/45R17	91(XL)	V	7.0	626	213	N/A				
17	205/45ZR17	88(XL)	W	7.0	616	206	E	C	72	2	
17	205/45R17	88(XL)	V	7.0	616	206	E	C	72	2	
16	225/45ZR16	89	W	7.5	608	225	E	C	72	3	
16	215/45R16	90(XL)	V	7.0	600	213	E	C	72	2	
16	205/45R16	87(XL)	V	7.0	590	206	E	C	72	2	
16	195/45R16	84(XL)	V	6.5	582	195	F	C	72	2	
16	165/45R16	74(XL)	V	5.5	554	165	F	C	72	3	
15	185/45R15	75	V	6.0	547	183	F	C	72	3	
50	18	245/50ZR18	104(XL)	Y	7.5	703	253	E	C	72	2
	17	225/50ZR17	98(XL)	Y	7.0	658	233	E	C	72	2
	17	225/50R17	94	V	7.0	658	233	E	C	72	3
	17	215/50ZR17	95(XL)	W	7.0	648	226	E	C	72	2
	17	215/50R17	95(XL)	V	7.0	648	226	E	C	72	2
	17	205/50ZR17	93(XL)	W	6.5	638	214	E	C	72	2
	17	205/50R17	93(XL)	V	6.5	638	214	E	C	72	2
	16	225/50ZR16	96(XL)	W	7.0	632	233	E	C	72	2
	16	225/50R16	96(XL)	V	7.0	632	233	E	C	72	2
	16	205/50ZR16	87	W	6.5	612	214	E	C	72	3
	16	205/50R16	87	V	6.5	612	214	E	C	72	3
	16	195/50R16	88(XL)	V	6.0	602	201	E	C	72	2
15	195/50R15	82	V	6.0	577	201	F	C	72	3	
55	18	225/55R18	98	V	7.0	705	233	E	C	72	3
	17	235/55ZR17	103(XL)	W	7.5	690	245	E	C	72	2
	17	235/55R17	103(XL)	H	7.5	690	245	E	C	72	2
	17	225/55ZR17	101(XL)	W	7.0	680	233	E	C	72	2
	17	215/55ZR17	98(XL)	W	7.0	668	226	E	C	72	2
	17	215/55R17	94	V	7.0	668	226	E	C	72	3
	17	205/55ZR17	95(XL)	Y	6.5	658	214	E	C	72	2
	16	225/55ZR16	99(XL)	Y	7.0	654	233	N/A			
	16	225/55R16	95	V	7.0	654	233	E	C	72	3
	16	215/55ZR16	97(XL)	Y	7.0	642	226	N/A			
	16	215/55R16	93	V	7.0	642	226	E	C	72	3
	16	205/55ZR16	94(XL)	W	6.5	632	214	E	C	72	2
16	205/55R16	94(XL)	V	6.5	632	214	E	C	72	2	
15	205/55R15	88	V	6.5	607	214	E	C			

*Sportnax*



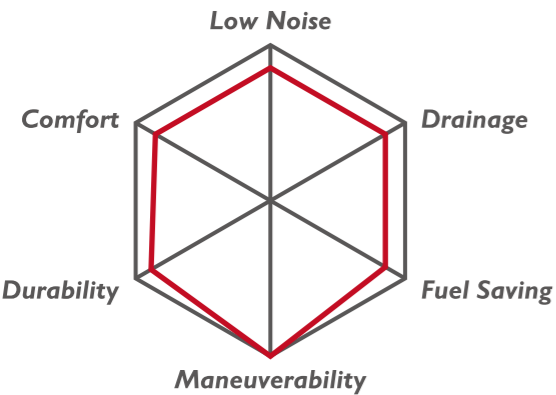
Two central circumferential grooves design can efficiently direct water away and enhance superior wet handling.

Computer simulated V-shaped drainage sub-grooves increase resistance to hydroplaning at high speed running through deep water.

Two-in-one pitches and variable width tread profile help to reduce pattern noise and provide a quieter comfort ride.

Shoulder edge sipes ensure even and prolonged tread wear.

# NS-2



Series	Inch	Size	Load Index	Speed Index	Rim Width (Inch)	OD (mm)	SW (mm)	EU TIRE LABEL				
								RRC	Wet Grip	NoiseValue (dB)	Noise Class	
30	24	255/30ZR24	97(XL)	W	9.0	764	260	E	C	71	2	
	22	265/30ZR22	100(XL)	W	9.5	719	271	E	C	71	2	
	22	255/30ZR22	95(XL)	W	9.0	713	260	E	C	71	2	
	22	245/30ZR22	92(XL)	W	8.5	707	248	E	C	71	2	
	20	285/30ZR20	99(XL)	Y	10.0	680	290	E	C	71	1	
	20	275/30ZR20	97(XL)	Y	9.5	674	278	E	C	71	2	
	20	255/30ZR20	92(XL)	Y	9.0	662	260	E	C	71	2	
	20	245/30ZR20	95(XL)	Y	8.5	656	248	E	C	71	2	
	20	235/30ZR20	88(XL)	W	8.5	650	241	F	C	71	2	
	20	225/30ZR20	85(XL)	W	8.0	644	230	F	C	71	2	
	20	215/30ZR20	82(XL)	W	7.5	638	218	F	C	71	2	
	19	285/30ZR19	94	Y	10.0	655	290	E	C	71	1	
	19	275/30ZR19	96(XL)	Y	9.5	649	278	E	C	71	2	
	19	265/30ZR19	93(XL)	Y	9.5	643	271	E	C	71	2	
	19	245/30ZR19	89(XL)	Y	8.5	631	248	F	C	71	2	
	18	285/30ZR18	93	Y	10.0	629	290	E	C	71	1	
	18	285/30R18	93	H	10.0	629	290	E	C	71	1	
	35	20	275/35ZR20	102(XL)	Y	9.5	700	278	E	C	71	2
20		255/35ZR20	97(XL)	Y	9.0	686	260	E	C	71	2	
20		245/35ZR20	95(XL)	Y	8.5	680	248	E	C	71	2	
20		235/35ZR20	92(XL)	W	8.5	672	241	E	C	71	2	
20		225/35ZR20	90(XL)	Y	8.0	666	230	F	C	71	2	
19		275/35ZR19	96	Y	9.5	675	278	E	C	71	2	
19		255/35ZR19	96(XL)	Y	9.0	661	260	E	C	71	2	
19		245/35ZR19	93(XL)	Y	8.5	655	248	E	C	71	2	
19		235/35ZR19	91(XL)	Y	8.5	647	241	E	C	71	2	
19		225/35ZR19	88(XL)	Y	8.0	641	230	F	C	71	2	
19		215/35ZR19	85(XL)	Y	7.5	633	218	F	C	71	2	
18		275/35ZR18	95	Y	9.5	649	278	E	C	71	2	
18		275/35R18	95	H	9.5	649	278	N/A				
18		275/35R18	95	H	9.5	649	278	E	C	71	2	
18		265/35ZR18	93	W	9.5	643	271	E	C	71	2	
18		265/35R18	93	H	9.5	643	271	E	C	71	2	
18		255/35ZR18	94(XL)	W	9.0	635	260	E	C	71	2	
18		255/35R18	94(XL)	H	9.0	635	260	E	C	71	2	
18	225/35ZR18	87(XL)	W	8.0	615	230	F	C	71	2		
18	225/35R18	87(XL)	H	8.0	615	230	F	C	71	2		
18	215/35ZR18	84(XL)	W	7.5	607	215	F	C	71	2		
18	215/35R18	84(XL)	H	7.5	607	218	F	C	71	2		
18	205/35R18	81(XL)	H	7.5	601	211	F	C	71	2		
17	185/35R17	82(XL)	V	6.5	562	188	F	C	71	2		
17	165/35R17	75(XL)	V	6.0	548	170	F	C	71	2		
40	20	245/40ZR20	95	Y	8.5	704	248	E	C	71	2	
	19	275/40ZR19	101	Y	9.5	703	278	E	C	71	2	
	19	245/40ZR19	98(XL)	W	8.5	679	248	E	C	71	2	
	19	245/40ZR19	94(XL)	W	8.5	679	248	N/A				
	19	225/40ZR19	93(XL)	Y	8.0	663	230	E	C	71	2	
	18	245/40ZR18	97(XL)	W	8.5	653	248	E	C	71	2	
	18	245/40R18	97(XL)	H	8.5	653	248	E	C	71	2	
	18	235/40ZR18	95(XL)	W	8.5	645	241	E	C	71	2	
	18	235/40R18	95(XL)	H	8.5	645	241	E	C	71	2	
	18	225/40ZR18	92(XL)	W	8.0	637	230	E	C	71	2	
	18	225/40R18	92(XL)	H	8.0	637	230	E	C	71	2	
	18	225/40R18	92(XL)	H	8.0	637	230	E	C	71	2	
	18	215/40ZR18	89(XL)	W	7.5	629	218	F	C	71	2	
	18	215/40R18	89(XL)	H	7.5	629	218	F	C	71	2	
	18	215/40R18	89(XL)	H	7.5	629	218	N/A				
	40	17	275/40ZR17	98	W	9.5	652	278	N/A			
		17	255/40R17	94	V	9.0	636	260	E	C	71	2
		17	245/40ZR17	91	W	8.5	628	248	E	C	71	2
17		245/40R17	91	V	8.5	628	248	E	C	71	2	
17		235/40R17	90	V	8.5	620	241	F	C	71	2	
17		215/40R17	83	H	7.5	604	218	F	C	71	2	
17		215/40R17	87(XL)	V	7.5	604	218	F	C	71	2	
17		205/40R17	84(XL)	V	7.5	596	212	F	C	71	2	
17		205/40R17	84(XL)	V	7.5	596	212	F	C	71	2	
17		165/40R17	75(XL)	V	6.0	564	170	F	C	71	2	
16		215/40ZR16	86(XL)	W	7.5	578	218	F	C	71	2	
16		205/40R16	83(XL)	V	7.5	570	212	F	C	71	2	
16		165/40R16	73(XL)	V	6.0	538	170	F	C	71	2	
16		165/40R16	73(XL)	V	6.0	538	170	F	C	71	2	
15		245/45ZR19	98	Y	8.0	703	243	E	C	71	2	
45		18	245/45ZR18	100(XL)	Y	8.0	677	243	E	C	71	2
		18	245/45R18	100(XL)	H	8.0	677	243	E	C	71	2
		18	225/45ZR18	95(XL)	W	7.5	659	225	E	C	71	2
	18	225/45R18	95(XL)	H	7.5	659	225	E	C	71	2	
	17	245/45R17	95	H	8	652	243	E	C	71	2	
	17	235/45R17	94	V	8.0	644	236	E	C	71	2	
	17	235/45R17	94	H	8.0	644	236	E	C	71	2	
	17	225/45R17	94(XL)	H	7.5	634	225	E	C	71	2	
	17	225/45R17	94(XL)	V	7.5	634	225	E	C	71	2	
	17	215/45ZR17	91(XL)	W	7.0	626	213	E	C	71	2	
	17	215/45R17	91(XL)	V	7.0	626	213	E	C	71	2	
	17	215/45R17	91(XL)	H	7.0	626	213	E	C	71	2	
	17	215/45R17	91(XL)	H	7.0	626	213	E	C	71	2	
	17	205/45R17	88(XL)	V	7.0	616	206	F	C	71	2	
	16	205/45R16	87(XL)	V	7.0	590	206	F	C	71	2	
	16	195/45R16	84(XL)	V	6.5	582	195	F	C	71	2	
	16	165/45R16	70	V	5.5	554	165	N/A				
	16	165/45R16	74(XL)	V	5.5	554	165	F	C	71	2	
15	195/45R15	78	V	6.5	557	195	F	C	71	2		
15	185/45R15	75	V	6.0	547	183	F	C	71	3		
50	17	215/50R17	91	V	7.0	648	226	E	C	71	2	
	17	205/50ZR17	93(XL)	W	6.5	638	214	E	C	71	2	
	17	205/50R17	93(XL)	V	6.5	638	214	E	C	71	2	
	16	225/50R16	92	V	7.0	632	233	E	C	71	2	
	16	205/50R16	87	V	6.5	612	214	F	C	71	2	
	16	195/50R16	84	V	6.0	602	201	F	C	71	2	
	15	205/50R15	86	V	6.5	587	214	F	C	71	2	
	15	195/50R15	82	V	6.0	577	201	F	C	71	2	
	15	165/50R15	72	V	5.0	547	170	F	C	71	3	
	17	225/55ZR17	101(XL)	W	7.0	680	233	E	C	71	2	
	55	16	225/55ZR16	95	W	7.0	654	233	E	C	71	2
		16	225/55R16	95	V	7.0	654	233	E	C	71	2
		16	215/55ZR16	97(XL)	W	7.0	642	226	E	C	71	2
		16	215/55R16	93	V	7.0	642	226	E	C	71	2
		16	205/55R16	91	V	6.5	632	214	E	C	71	2
		15	205/55R15	88	V	6.5	607	214	F	C	71	2
		15	195/55R15	85	V	6.0	595	201	F	C	71	2
		15	185/55R15	82	V	6.0	585	194	F	C	71	3
14		155/55R14	73(XL)	V	5.0	526	162	E	C	71	3	
60		14	205/60R14	92(XL)	H	6.0	602	209	E	C	71	2
		13	195/60R13	83	H	6.0	564	201	F	C	71	2
		13	175/60R13	77	H	5.0	540	177	F	C	71	3

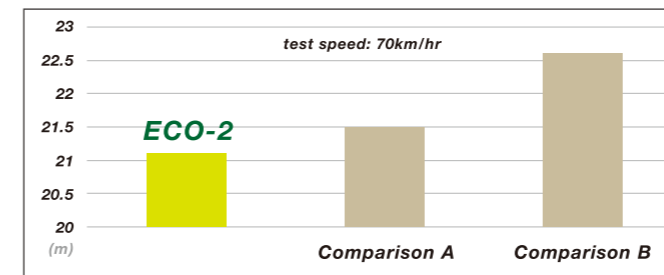




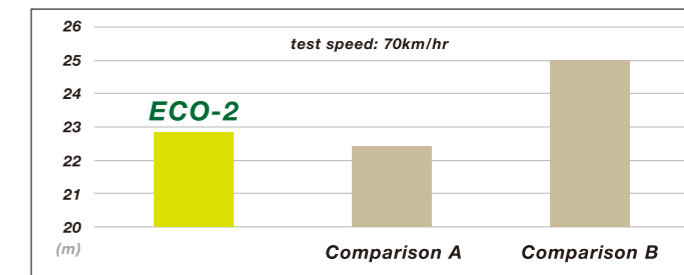
ECONEK



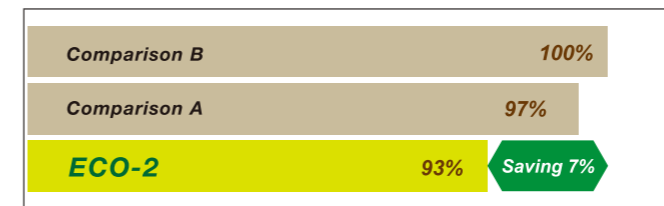
• Dry Road Braking Test



• Wet Road Braking Test



• Fuel Efficiency Index (%)



Excellent dispersible silica and unique crosslinking agents reduces rolling resistance substantially as well as enhances wet grip.

The "Chain-End Modification" technology used in synthetic rubber strengthens fuel saving and traction.

HA-oil-free formula for all sizes conforms with EU environmental protection laws.

Central sub grooves with shallower depth enhance vertical/lateral block stiffness to avert block deformation and further reduce energy consumption.

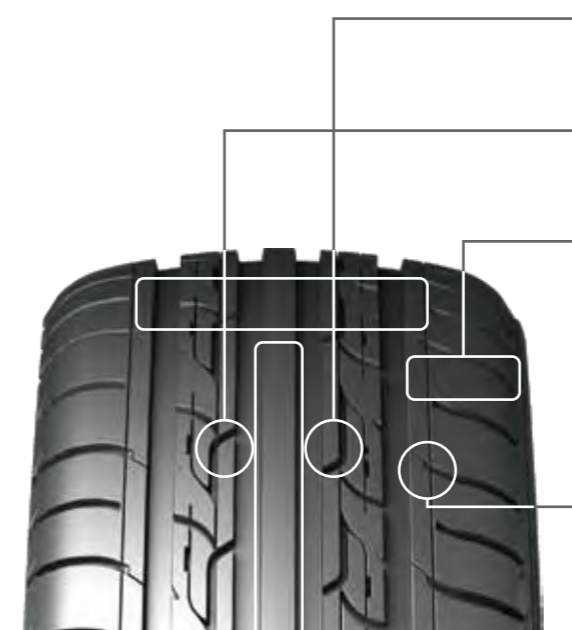
Shoulder groove bottom with big angle retains shoulder block continuity, weakens block wriggling, and reduces energy consumption.

Two section lateral grooves on shoulders profile prevent uneven tread wear and enhance traction.

Four circumferential grooves enhance drainage performance and safety on wet roads.

Central rib design reinforces straight driving and handling performance.

Circumferential rib design on tread shoulder, with thin sipes instead of run-through lateral grooves, prevents groove resonance.



Series	Inch	Size	Load Index	Speed Index	Rim Width (Inch)	OD (mm)	SW (mm)	EU TIRE LABEL			
								RRC	Wet Grip	NoiseValue (dB)	Noise Class
40	18	245/40ZR18	97(XL)	Y	8.5	653	248	C	B	72	2
	18	245/40R18	97(XL)	H	8.5	653	248	C	B	72	2
	18	235/40ZR18	95(XL)	W	8.5	645	241	C	B	72	2
	18	235/40R18	95(XL)	H	8.5	645	241	C	B	72	2
	18	225/40ZR18	92(XL)	W	8.0	637	230	C	B	72	2
	18	225/40R18	92(XL)	H	8.0	637	230	C	B	72	2
45	19	245/45ZR19	98	W	8.0	703	243	C	B	72	3
	19	245/45R19	102(XL)	Y	8.0	703	243	C	B	72	2
	18	225/45ZR18	95(XL)	W	7.5	659	225	C	B	72	2
	18	225/45R18	95(XL)	H	7.5	659	225	C	B	72	2
	18	215/45ZR18	93(XL)	W	7.0	651	213	C	B	72	2
	18	215/45R18	93(XL)	H	7.0	651	213	C	B	72	2
	17	225/45ZR17	94(XL)	W	7.5	634	225	C	B	72	2
	17	225/45R17	94(XL)	V	7.5	634	225	C	B	72	2
	17	215/45R17	91(XL)	V	7.0	626	213	C	B	72	2
	16	205/45ZR16	87(XL)	W	7.0	590	206			N/A	
50	18	245/50ZR18	100	W	7.5	703	253	C	B	72	3
	18	245/50R18	100	H	7.5	703	253	C	B	72	3
	18	235/50ZR18	101(XL)	Y	7.5	693	245	C	B	72	2
	18	235/50R18	101(XL)	H	7.5	693	245	C	B	72	2
	16	205/50R16	87	V	6.5	612	214	C	B	72	3
	15	165/50R15	72	V	5.0	572	170			N/A	
55	19	235/55R19	105(XL)	V	7.5	741	245	C	B	72	2
	18	235/55R18	104(XL)	V	7.5	715	245	C	B	72	2

Series	Inch	Size	Load Index	Speed Index	Rim Width (Inch)	OD (mm)	SW (mm)	EU TIRE LABEL			
								RRC	Wet Grip	NoiseValue (dB)	Noise Class
55	17	215/55R17	98(XL)	V	7.0	668	226	C	B	72	2
	16	205/55R16	91	V	6.5	632	214	C	B	72	3
	16	205/55R16	94(XL)	V	6.5	632	214	C	B	72	2
	16	195/55R16	87	V	6.0	620	201	C	B	72	3
	16	185/55R16	87(XL)	V	6.0	610	194	C	B	72	3
	15	185/55R15	82	V	6.0	585	194			N/A	
60	14	165/55R14	72	V	5.0	526	162			N/A	
	18	235/60R18	107(XL)	V	7.0	739	240	C	B	72	2
	17	225/60R17	99	H	6.5	702	228	C	B	72	3
	17	215/60R17	96	H	6.5	690	221	C	B	72	3
	16	225/60R16	98	V	6.5	676	228	C	B	72	3
	16	215/60R16	99(XL)	V	6.5	664	221	C	B	72	2
	16	205/60R16	96(XL)	V	6.0	652	209	C	B	72	2
	16	205/60R16	96(XL)	H	6.0	652	209	C	B	72	2
	16	185/60R16	86	H	5.5	628	189	E	B	72	3
	15	165/60R15	77	H	5.0	579	170	E	B	72	3
65	17	225/65R17	102	V	6.5	724	228	C	B	72	3
	16	195/65R16	92	V	6.0	660	201			N/A	
	15	205/65R15	95	H	6.0	672	209			N/A	
	15	195/65R15	91	H	6.0	660	201			N/A	
	15	185/65R15	88	H	5.5	621	189			N/A	
80	15	175/65R15	88(XL)	H	5.0	609	177	C	B	72	3
	13	135/80R13	70	T	3.5	546	133			N/A	

N/A = Values are not available at the time of publication.

ECO-2



TAIWAN EXCELLENCE 2013





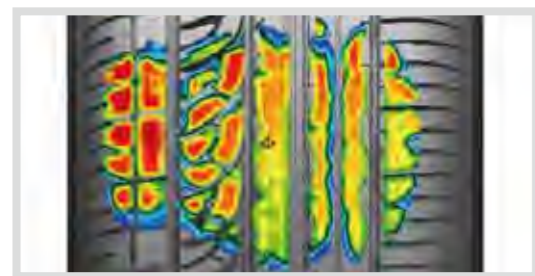
COMFORT

# NK COMFORT

# AS-1



### Inside and outside pattern allocation adopts 50% v.s 50% width design.

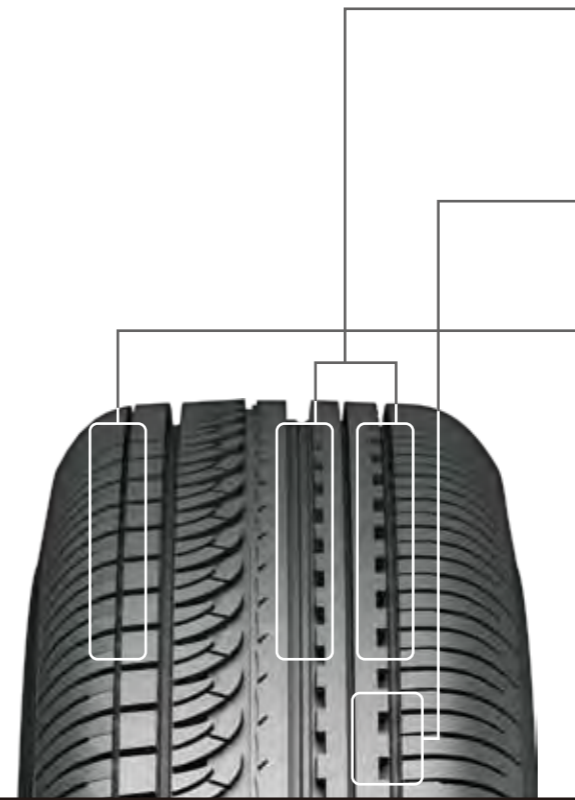


← inside → ← outside →

On the outside tread, the high-stiffness curved pattern increases the cornering force and enhances the steering ability. Two straight broad grooves and the sipe bars added in the middle groove accumulate the water for better drainage efficiency and driving safety in wet conditions.

On the inside tread, the evenly thin sipe design reduces the road impact and enhances driving comfort. Unique straight groove on the tread shoulder not only normalizes the stiffness and contact patch, but also prevents from irregular wear.

Unique silica formula increases the grip on wet ground and reduces rolling resistance.



In order to get the better drainage efficiency, two straight broad grooves are applied on the outside. To enhance the safety on the wet ground, the stream in the middle groove is used to accumulate the water with the assistance of fine sipe bar to divert the water for safer drive.

To increase cornering force on the outside, the shoulder high rigidity pattern to strengthen cornering force and enhance the steering ability.

Unique straight grooves on the shoulder gives the whole tread look more rigid and prevent it from irregular wear.

The evenly thin sipes reduce the road impact and enhance the comfort when driving.

In order to get the best silent features, the tread pattern is using two-in-one and multi-pitch design.

Series	Inch	Size	Load Index	Speed Index	Rim Width (Inch)	OD (mm)	SW (mm)	EU TIRE LABEL				
								RRC	Wet Grip	NoiseValue (dB)	Noise Class	
30	21	285/30ZR21	100(XL)	Y	10.0	705	290	E	C	74	2	
	21	255/30ZR21	93(XL)	Y	9.0	687	260	N/A				
35	21	295/35ZR21	107(XL)	Y	10.5	739	301	E	C	74	2	
	21	245/35ZR21	96(XL)	Y	8.5	705	248	E	C	74	2	
40	20	315/35ZR20	110(XL)	Y	11.0	728	320	E	C	74	2	
	18	255/35ZR18	94(XL)	W	9.0	635	260	E	C	71	2	
	18	255/35R18	94(XL)	H	9.0	635	260	E	C	71	2	
	18	225/35R18	87(XL)	H	8.0	615	230	E	C	71	2	
	18	215/35R18	84(XL)	H	7.5	607	218	F	C	71	2	
	18	205/35R18	81(XL)	H	7.5	601	211	F	C	71	2	
	18	165/35R18	82(XL)	V	6.0	573	170	F	C	71	2	
	20	275/40ZR20	106(XL)	Y	9.5	728	278	E	C	74	3	
	20	265/40ZR20	104(XL)	Y	9.5	720	271	E	C	74	3	
	19	255/40ZR19	100(XL)	Y	9.0	687	260	E	C	71	2	
45	19	235/40ZR19	96(XL)	Y	8.5	671	241	E	C	71	2	
	18	275/40R18	99	W	9.5	677	278	E	C	74	3	
	18	275/40R18	99	H	9.5	677	278	E	C	74	3	
	18	265/40R18	101(XL)	Y	9.5	669	271	E	C	74	3	
	18	265/40R18	101(XL)	H	9.5	669	271	E	C	74	3	
	18	255/40R18	99(XL)	Y	9.0	661	260	E	C	71	2	
	18	255/40R18	99(XL)	H	9.0	661	260	E	C	71	2	
	18	245/40R18	97(XL)	Y	8.5	653	248	E	C	71	2	
	18	245/40R18	97(XL)	H	8.5	653	248	E	C	71	2	
	18	235/40R18	95(XL)	Y	8.5	645	241	E	C	71	2	
50	18	235/40R18	95(XL)	H	8.5	645	241	E	C	71	2	
	18	225/40R18	92(XL)	Y	8.0	637	230	E	C	71	2	
	18	225/40R18	92(XL)	H	8.0	637	230	E	C	71	2	
	18	215/40R18	89(XL)	H	7.5	629	218	E	C	71	2	
	18	205/40R18	82	W	7.5	621	212	F	C	71	2	
	18	205/40R18	86(XL)	H	7.5	621	212	E	C	71	2	
	17	195/40R17	81(XL)	W	7.0	588	200	F	C	71	2	
	17	195/40R17	81(XL)	H	7.0	588	200	F	C	71	2	
	20	275/45ZR20	106	Y	9.0	756	273	N/A				
	20	255/45ZR20	105(XL)	W	8.5	738	255	E	C	71	2	
55	19	225/45ZR19	96(XL)	W	7.5	685	225	E	C	71	2	
	18	255/45R18	103(XL)	Y	8.5	687	255	E	C	71	2	
	18	245/45R18	100(XL)	W	8.0	677	243	E	C	71	2	
	18	245/45R18	100(XL)	H	8.0	677	243	E	C	71	2	
	18	235/45R18	98(XL)	W	8.0	669	236	E	C	71	2	
	18	235/45R18	94	H	8.0	669	236	E	C	71	2	
	18	225/45R18	95(XL)	W	7.5	659	225	E	C	71	2	
	18	225/45R18	95(XL)	H	7.5	659	225	E	C	71	2	
	20	275/45R20	106	Y	9.0	756	273	N/A				
	20	255/45R20	105(XL)	W	8.5	738	255	E	C	71	2	
60	19	225/45R19	96(XL)	W	7.5	685	225	E	C	71	2	
	16	215/60R16	89	H	6.0	640	201	E	C	71	2	
	16	185/60R16	86	H	5.5	628	189	E	C	71	3	
	15	195/60R15	88	H	6.0	615	201	E	C	71	2	
	15	175/60R15	81	H	5.0	591	177	F	C	71	3	
	15	155/60R15	74	V	4.5	567	157	F	C	71	3	
	14	165/60R14	75	H	5.0	554	170	F	C	71	3	
	16	215/65R16	98	H	6.5	686	221	E	C	71	2	
	16	205/65R16	95	H	6.0	672	209	E	C	71	2	
	65	15	205/65R15	95	H	6.0	647	209	E	C	71	2
15		165/65R15	81	T	5.0	595	170	F	C	71	3	
15		145/65R15	72	V	4.5	569	150	F	C	71	3	
14		155/65R14	75	V	4.5	558	157	F	C	71	3	
70		15	135/70R15	70	T	4.0	567	140	F	C	71	3

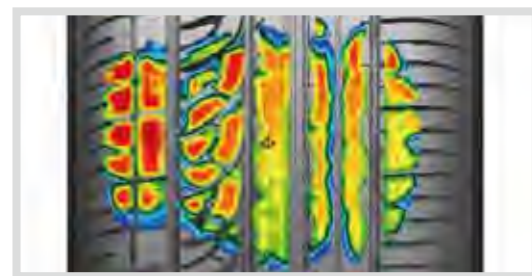
Series	Inch	Size	Load Index	Speed Index	Rim Width (Inch)	OD (mm)	SW (mm)	EU TIRE LABEL			
								RRC	Wet Grip	NoiseValue (dB)	Noise Class
45	18	215/45R18	93(XL)	H	7.0	651	213	E	C	71	2
	17	225/45R17	94(XL)	W	7.5	634	225	E	C	71	2
50	17	215/45R17	91(XL)	V	7.0	626	213	E	C	71	2
	17	165/45R17	75(XL)	V	5.5	580	165	F	C	71	2
55	15	165/45R15	72(XL)	V	5.5	529	165	F	C	71	2
	18	245/50R18	104(XL)	T	7.5	703	253	E	C	71	2
	18	235/50ZR18	97	W	7.5	693	245	E	C	71	2
	18	235/50R18	97	H	7.5	693	245	E	C	71	2
	18	225/50R18	95	H	7.0	683	233	E	C	71	2
	17	235/50R17	96	V	7.5	668	245	E	C	71	2
	17	225/50R17	94	V	7.0	658	233	E	C	71	2
	17	215/50R17	91	V	7.0	648	226	E	C	71	2
	16	165/50R16	75	V	5.0	572	170	F	C	71	3
	13	175/50R13	72	V	5.5	506	182	F	C	71	3
60	19	225/55ZR19	99	Y	7.0	731	233	E	C	71	2
	17	225/55R17	101(XL)	V	7.0	680	233	E	C	71	2
	17	215/55R17	94	V	7.0	668	226	E	C	71	2
	17	205/55R17	91	V	6.5	658	214	E	C	71	2
	16	205/55R16	91	V	6.5	632	214	E	C	71	2
	16	195/55R16	87	V	6.0	620	201	E	C	71	2
	15	195/55R15	85	V	6.0	595	201	F	C	71	2
	15	175/55R15	77	V	5.5	573	182	F	C	71	3
	15	165/55R15	75	V	5.0	563	170	F	C	71	3
	14	165/55R14	72	V	5.0	563	170	F	C	71	3
65	14	155/55R14	69	V	5.0	526	162	F	C	71	3
	18	265/60R18	110	H	8.0	775	272	E	C	74	3
	18	225/60ZR18	100	W	6.5	727	228	E	C	71	2
	18	225/60R18	100	H	6.5	727	228	E	C	71	2
	17	215/60R17	96	H	6.5	690	221	E	C	71	2
	16	195/60R16	89	H	6.0	640	201	E	C	71	2
	16	185/60R16	86	H	5.5	628	189	E	C	71	3
	15	195/60R15	88	H	6.0	615	201	E	C	71	2
	15	175/60R15	81	H	5.0	591	177	F	C	71	3
	15	155/60R15	74	V	4.5	567	157	F	C	71	3

N/A = Values are not available at the time of publication.

# AS-1



### Inside and outside pattern allocation adopts 50% v.s 50% width design.

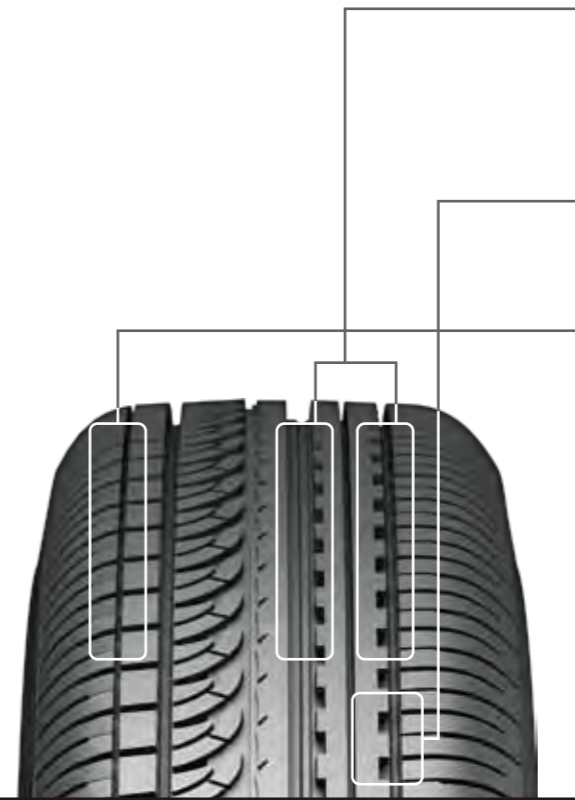


← inside → ← outside →

On the outside tread, the high-stiffness curved pattern increases the cornering force and enhances the steering ability. Two straight broad grooves and the sipe bars added in the middle groove accumulate the water for better drainage efficiency and driving safety in wet conditions.

On the inside tread, the evenly thin sipe design reduces the road impact and enhances driving comfort. Unique straight groove on the tread shoulder not only normalizes the stiffness and contact patch, but also prevents from irregular wear.

Unique silica formula increases the grip on wet ground and reduces rolling resistance.



In order to get the better drainage efficiency, two straight broad grooves are applied on the outside. To enhance the safety on the wet ground, the stream in the middle groove is used to accumulate the water with the assistance of fine sipe bar to divert the water for safer drive.

To increase cornering force on the outside, the shoulder high rigidity pattern to strengthen cornering force and enhance the steering ability.

Unique straight grooves on the shoulder gives the whole tread look more rigid and prevent it from irregular wear.

The evenly thin sipes reduce the road impact and enhance the comfort when driving.

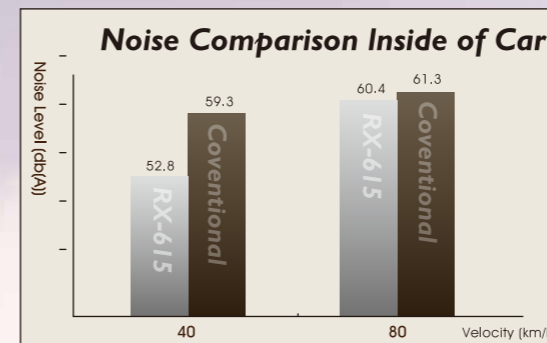
In order to get the best silent features, the tread pattern is using two-in-one and multi-pitch design.

Series	Inch	Size	Load Index	Speed Index	Rim Width (Inch)	OD (mm)	SW (mm)	EU TIRE LABEL			
								RRC	Wet Grip	NoiseValue (dB)	Noise Class
30	21	285/30ZR21	100(XL)	Y	10.0	705	290	E	C	74	2
	21	255/30ZR21	93(XL)	Y	9.0	687	260	N/A			
35	21	295/35ZR21	107(XL)	Y	10.5	739	301	E	C	74	2
	21	245/35ZR21	96(XL)	Y	8.5	705	248	E	C	74	2
40	20	315/35ZR20	110(XL)	Y	11.0	728	320	E	C	74	2
	18	255/35ZR18	94(XL)	W	9.0	635	260	E	C	71	2
	18	255/35R18	94(XL)	H	9.0	635	260	E	C	71	2
	18	225/35R18	87(XL)	H	8.0	615	230	E	C	71	2
	18	215/35R18	84(XL)	H	7.5	607	218	F	C	71	2
	18	205/35R18	81(XL)	H	7.5	601	211	F	C	71	2
	18	165/35R18	82(XL)	V	6.0	573	170	F	C	71	2
	20	275/40ZR20	106(XL)	Y	9.5	728	278	E	C	74	3
	20	265/40ZR20	104(XL)	Y	9.5	720	271	E	C	74	3
	19	255/40ZR19	100(XL)	Y	9.0	687	260	E	C	71	2
45	19	235/40ZR19	96(XL)	Y	8.5	671	241	E	C	71	2
	18	275/40R18	99	W	9.5	677	278	E	C	74	3
	18	275/40R18	99	H	9.5	677	278	E	C	74	3
	18	265/40R18	101(XL)	Y	9.5	669	271	E	C	74	3
	18	265/40R18	101(XL)	H	9.5	669	271	E	C	74	3
	18	255/40R18	99(XL)	Y	9.0	661	260	E	C	71	2
	18	255/40R18	99(XL)	H	9.0	661	260	E	C	71	2
	18	245/40R18	97(XL)	Y	8.5	653	248	E	C	71	2
	18	245/40R18	97(XL)	H	8.5	653	248	E	C	71	2
	18	235/40R18	95(XL)	Y	8.5	645	241	E	C	71	2
50	18	235/40R18	95(XL)	H	8.5	645	241	E	C	71	2
	18	225/40R18	92(XL)	Y	8.0	637	230	E	C	71	2
	18	225/40R18	92(XL)	H	8.0	637	230	E	C	71	2
	18	215/40R18	89(XL)	H	7.5	629	218	E	C	71	2
	18	205/40R18	82	W	7.5	621	212	F	C	71	2
	18	205/40R18	86(XL)	H	7.5	621	212	E	C	71	2
	17	195/40R17	81(XL)	W	7.0	588	200	F	C	71	2
	17	195/40R17	81(XL)	H	7.0	588	200	F	C	71	2
	20	275/45ZR20	106	Y	9.0	756	273	N/A			
	20	255/45ZR20	105(XL)	W	8.5	738	255	E	C	71	2
55	19	225/45ZR19	96(XL)	W	7.5	685	225	E	C	71	2
	18	255/45R18	103(XL)	Y	8.5	687	255	E	C	71	2
	18	245/45R18	100(XL)	W	8.0	677	243	E	C	71	2
	18	245/45R18	100(XL)	H	8.0	677	243	E	C	71	2
	18	235/45R18	98(XL)	W	8.0	669	236	E	C	71	2
	18	235/45R18	94	H	8.0	669	236	E	C	71	2
	18	225/45R18	95(XL)	W	7.5	659	225	E	C	71	2
	18	225/45R18	95(XL)	H	7.5	659	225	E	C	71	2
	20	275/45R20	106	Y	9.0	756	273	N/A			
	20	255/45R20	105(XL)	W	8.5	738	255	E	C	71	2
60	19	225/45R19	96(XL)	W	7.5	685	225	E	C	71	2
	18	255/45R18	103(XL)	Y	8.5	687	255	E	C	71	2
	18	245/45R18	100(XL)	W	8.0	677	243	E	C	71	2
	18	245/45R18	100(XL)	H	8.0	677	243	E	C	71	2
	18	235/45R18	98(XL)	W	8.0	669	236	E	C	71	2
	18	235/45R18	94	H	8.0	669	236	E	C	71	2
	18	225/45R18	95(XL)	W	7.5	659	225	E	C	71	2
	18	225/45R18	95(XL)	H	7.5	659	225	E	C	71	2
	20	275/45R20	106	Y	9.0	756	273	N/A			
	20	255/45R20	105(XL)	W	8.5	738	255	E	C	71	2
65	19	225/45R19	96(XL)	W	7.5	685	225	E	C	71	2
	18	255/45R18	103(XL)	Y	8.5	687	255	E	C	71	2
	18	245/45R18	100(XL)	W	8.0	677	243	E	C	71	2
	18	245/45R18	100(XL)	H	8.0	677	243	E	C	71	2
	18	235/45R18	98(XL)	W	8.0	669	236	E	C	71	2
	18	235/45R18	94	H	8.0	669	236	E	C	71	2
	18	225/45R18	95(XL)	W	7.5	659	225	E	C	71	2
	18	225/45R18	95(XL)	H	7.5	659	225	E	C	71	2
	20	275/45R20	106	Y	9.0	756	273	N/A			
	20	255/45R20	105(XL)	W	8.5	738	255	E	C	71	2
70	16	215/65R16	98	H	6.5	686	221	E	C	71	2
	16	205/65R16	95	H	6.0	672	209	E	C	71	2
	15	205/65R15	95	H	6.0	647	209	E	C	71	2
	15	165/65R15	81	T	5.0	595	170	F	C	71	3
	15	145/65R15	72	V	4.5	569	150	F	C	71	3
	14	155/65R14	75	V	4.5	558	157	F	C	71	3
	15	155/60R15	74	V	4.5	567	157	F	C	71	3
	14	165/60R14	75	H	5.0	554	170	F	C	71	3
	16	215/65R16	98	H	6.5	686	221	E	C	71	2
	16	205/65R16	95	H	6.0	672	209	E	C	71	2
75	15	165/65R15	81	T	5.0	595	170	F	C	71	3
	15	145/65R15	72	V	4.5	569	150	F	C	71	3
	14	155/65R14	75	V	4.5	558	157	F	C	71	3
	15	155/60R15	74	V	4.5	567	157	F	C	71	3
	14	165/60R14	75	H	5.0	554	170	F	C	71	3
	16	215/65R16	98	H	6.5	686	221	E	C	71	2
	16	205/65R16	95	H	6.0	672	209	E	C	71	2
	15	205/65R15	95	H	6.0	647	209	E	C	71	2
	15	165/65R15	81	T	5.0	595	170	F	C	71	3
	15	145/65R15	72	V	4.5	569	150	F	C	71	3
80	14	155/65R14	75	V	4.5	558	157	F	C	71	3
	15	155/60R15	74	V	4.5	567	157	F	C	71	3
	14	165/60R14	75	H	5.0	554	170	F	C	71	3
	16	215/65R16	98	H	6.5	686	221	E	C	71	2
	16	205/65R16	95	H	6.0	672	209	E	C	71	2
	15	205/65R15	95	H	6.0	647	209	E	C	71	2
	15	165/65R15	81	T	5.0	595	170	F	C	71	3
	15	145/65R15	72	V	4.5	569	150	F	C	71	3
	14	155/65R14	75	V	4.5	558	157	F	C	71	3
	15	155/60R15	74	V	4.5	567	157	F	C	71	3

N/A = Values are not available at the time of publication.



## RX-615



### Noise Comparison between RX-615 and Conventional tires.

The new generation low-noise tire uses computerized multi-pitch simulation technology as well as the multi-sipe design on the tread pattern to reduce and restrain noise generation. The sub-groove on the tread shoulders can reduce the pattern stiffness to prevent from irregular wear.



COMFORT  
RX-615



- Four straight broad grooves enhance drainage efficiency and upgrade the safety on wet ground.
- The sub-straight grooves on the shoulder reduce the rigidity and prevent uneven wear happens.
- Multi sipes design reduces the rigidity of the tread and enhance the driving comfort.
- The lateral groove design curbs the generation of pattern .
- The pitch is designed with 5-pitch computer simulation to provide quiet and luxurious driving experience.

Series	Inch	Size	Load Index	Speed Index	Rim Width (Inch)	OD (mm)	SW (mm)	EU TIRE LABEL			
								RRC	Wet Grip	NoiseValue (dB)	Noise Class
45	17	215/45R17	91(XL)	V	7.0	626	213	E	C	69	1
	16	205/45R16	87(XL)	V	7.0	590	206	E	C	69	1
50	16	225/50R16	92	V	7.0	632	233	E	C	69	2
	15	205/50R15	86	V	6.5	587	214	E	C	69	2
55	15	195/50R15	82	V	6.0	577	201	F	C	69	2
	16	225/55ZR16	95	W	7.0	654	233	E	C	69	2
60	16	225/55R16	95	W	7.0	654	233	E	C	69	2
	16	215/55R16	93	V	7.0	642	226	E	C	69	2
	16	205/55R16	94(XL)	V	6.5	632	214	E	C	69	1
	16	205/55R16	94(XL)	V	6.5	632	214	E	C	69	1
	16	185/55R16	83	V	6.0	610	194	E	C	69	2
	15	195/55R15	85	V	6.0	595	201	E	C	69	2
	14	185/55R14	80	H	6.0	560	194	F	C	69	2
	14	185/55R14	80	H	6.0	560	194	F	C	69	2
	16	225/60R16	98	V	6.5	676	228	E	C	69	2
	16	215/60R16	99(XL)	V	6.5	664	221	E	C	69	1
70	16	205/60R16	96(XL)	V	6.0	652	209	E	C	69	1
	15	225/60R15	96	V	6.5	651	228	E	C	69	2
	15	215/60R15	94	H	6.5	639	221	E	C	69	2
	15	215/60R15	94	V	6.5	639	221	E	C	69	2
	15	205/60R15	91	H	6.0	627	209	E	C	69	2
	15	205/60R15	91	V	6.0	627	209	E	C	69	2
	15	195/60R15	88	H	6.0	615	201	E	C	69	2
	15	195/60R15	88	V	6.0	615	201	E	C	69	2
	14	215/60R14	91	H	6.5	614	221	E	C	69	2
	14	205/60R14	88	H	6.0	602	209	E	C	69	2
80	14	195/60R14	86	H	6.0	590	201	E	C	69	2
	14	185/60R14	82	H	5.5	578	189	F	C	69	2

Series	Inch	Size	Load Index	Speed Index	Rim Width (Inch)	OD (mm)	SW (mm)	EU TIRE LABEL			
								RRC	Wet Grip	NoiseValue (dB)	Noise Class
60	13	205/60R13	86	H	6.0	576	209	E	C	69	2
	13	185/60R13	80	H	5.5	552	189	F	C	69	2
65	16	215/65R16	98	V	6.5	686	221	E	C	69	2
	16	205/65R16	95	V	6.0	672	209	E	C	69	2
	15	215/65R15	96	V	6.5	661	221	E	C	69	2
	15	215/65R15	96	H	6.5	661	221	E	C	69	2
	15	205/65R15	95	H	6.0	647	209	E	C	69	2
	15	205/65R15	94	V	6.0	647	209	E	C	69	2
70	15	195/65R15	91	V	6.0	635	201	E	C	69	2
	15	195/65R15	91	H	6.0	635	201	E	C	69	2
	15	185/65R15	88	H	5.5	621	189	E	C	69	2
	14	195/65R14	89	H	6.0	610	201	E	C	69	2
	14	185/65R14	86	H	5.5	596	189	E	C	69	2
	14	175/65R14	82	H	5.0	584	177	F	C	69	2
	14	155/65R14	75(WR)	H	4.5	558	157	F	C	69	2
	13	155/65R13	73	T	4.5	532	157	F	C	69	2
	14	205/70R14	95	H	6.0	644	209	E	C	69	2
	14	195/70R14	91	H	6.0	630	201	E	C	69	2
80	14	185/70R14	88	H	5.5	616	189	E	C	69	2
	14	175/70R14	84	H	5.0	602	177	E	C	69	2
	13	185/70R13	86	H	5.5	590	189	E	C	69	2
	13	175/70R13	82	H	5.0	576	177	F	C	69	2
	13	165/70R13	79	T	5.0	562	170	F	C	69	2
	13	155/70R13	75	T	4.5	548	157	F	C	69	2
	13	145/70R13	71	T	4.5	534	150	F	C	69	2
	13	145/80R13	75	S	4.0	562	145	F	C	69	2

N/A =Values are not available at the time of publication.  
WR=WHITE RIBBON

# XR-611

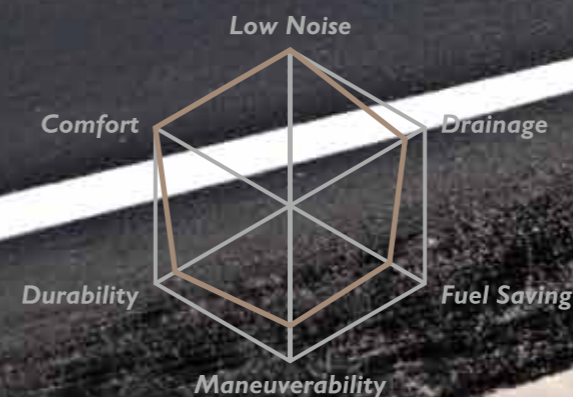
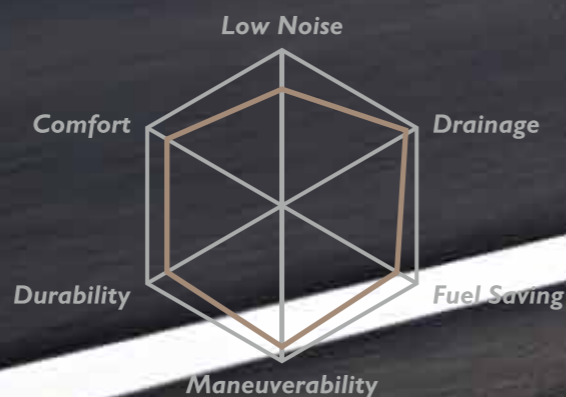
# CX-668

Four straight groove pattern enhances the drainage efficiency and the maneuverability on wet ground.

Special block pattern design enforces the maneuverability

The gradually broadened grooves expedite drainage efficiency.

Pitch pattern designed by computer-simulated calculation reduces the noise generation.



COMFORT

XR-611

CX-668

Series	Inch	Size	Load Index	Speed Index	Rim Width (Inch)	OD (mm)	SW (mm)	EU TIRE LABEL			
								RRC	Wet Grip	NoiseValue (dB)	Noise Class
45	18	215/45R18	93(XL)	V	7.0	651	213	E	C	71	2
	18	225/50R18	95	V	7.0	683	233	E	C	71	2
50	18	215/50R18	92	V	7.0	673	226	E	C	71	2
	17	225/50R17	94	V	7.0	658	233	E	C	71	2
17	215/50R17	91	V	7.0	648	226	E	C	71	2	
16	225/50R16	92	V	7.0	632	233	E	C	71	2	
15	225/50R15	91	V	7.0	607	233	E	C	71	2	
15	205/50R15	86	V	6.5	587	214	E	C	71	2	
17	215/55R17	94	V	7.0	668	226	E	C	71	2	
16	195/55R16	87	V	6.0	620	201	E	C	71	2	
14	185/55R14	80	H	6.0	560	194	F	C	71	3	
14	165/55R14	72	V	5.0	538	170	F	C	71	3	
13	165/55R13	70	H	5.0	512	170	F	C	71	3	
17	225/60R17	99	V	6.5	702	228	E	C	71	2	
17	215/60R17	96	H	6.5	690	221	E	C	71	2	
16	235/60R16	100	V	7.0	688	240	E	C	71	2	
16	225/60R16	98	V	6.5	676	228	E	C	71	2	
16	215/60R16	99(XL)	H	6.5	664	221	E	C	71	2	
16	215/60R16	95	H	6.5	664	221		N/A			
16	205/60R16	96(XL)	V	6.0	652	209	E	C	71	2	
16	205/60R16	96(XL)	H	6.0	652	209	E	C	71	2	
16	175/60R16	82	H	5.0	616	177	E	C	71	3	
15	235/60R15	98	S	7.0	663	240	E	C	71	2	
15	225/60R15	96	V	6.5	651	228	E	C	71	2	
15	215/60R15	94	H	6.5	639	221	E	C	71	2	
15	205/60R15	91	H	6.0	627	209	E	C	71	2	
15	205/60R15	91	V	6.0	627	209	E	C	71	2	
15	195/60R15	88	V	6.0	615	201	E	C	71	2	
15	195/60R15	88	H	6.0	615	201	E	C	71	2	

Series	Inch	Size	Load Index	Speed Index	Rim Width (Inch)	OD (mm)	SW (mm)	EU TIRE LABEL			
								RRC	Wet Grip	NoiseValue (dB)	Noise Class
60	15	185/60R15	88(XL)	H	5.5	603	189	E	C	71	2
	14	205/60R14	88	H	6.0	602	209	E	C	71	2
14	195/60R14	86	H	6.0	590	201	E	C	71	2	
14	195/60R14	86	V	6.0	590	201		N/A			
14	185/60R14	82	V	5.5	578	189	E	C	71	3	
14	185/60R14	82	H	5.5	578	189	E	C	71	3	
14	175/60R14	79	H	5.0	566	177	F	C	71	3	
13	205/60R13	86	H	6.0	576	209	E	C	71	2	
13	185/60R13	80	H	5.5	552	189	E	C	71	3	
13	175/60R13	77	H	5.0	540	177	F	C	71	3	
65	17	215/65R17	99	H	6.5	712	221	E	C	71	2
	15	215/65R15	96	H	6.5	661	221	E	C	71	2
15	205/65R15	95	H	6.0	647	209	E	C	71	2	
15	205/65R15	95	V	6.0	647	209	E	C	71	2	
15	195/65R15	91	H	6.0	635	201	E	C	71	2	
15	195/65R15	91	V	6.0	635	201	E	C	71	2	
15	195/65R15	95(XL)	H	6.0	635	201	E	C	71	2	
15	185/65R15	92(XL)	H	5.5	621	189	E	C	71	2	
15	175/65R15	88(XL)	H	5.0	609	177	E	C	71	2	
14	195/65R14	89	H	6.0	610	201	E	C	71	2	
14	185/65R14	86	H	5.5	596	189	E	C	71	3	
14	175/65R14	82	H	5.0	584	177	E	C	71	3	
14	165/65R14	79	H	5.0	570	170	F	C	71	3	
13	165/65R13	77	H	5.0	544	170	F	C	71	3	
13	185/70R13	90(XL)	H	5.5	590	189	E	C	71	2	
13	175/70R13	86(XL)	H	5.0	576	177	E	C	71	2	
12	155/70R12	73	T	4.5	523	157	F	C	71	3	
80	15	175/80R15	90	S	5.0	660	177	E	C	71	3

N/A =Values are not available at the time of publication.



Four straight grooves enhance the drainage.

Dual double grooves on the tire shoulder divert and balance the force in driving and prevent uneven wear.

Thinner sipes on the shoulder efficiently reduce the noise generation.

Small block pattern design helps to provide better comfort.

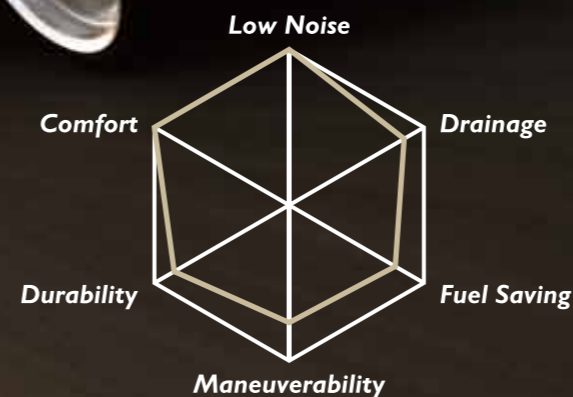
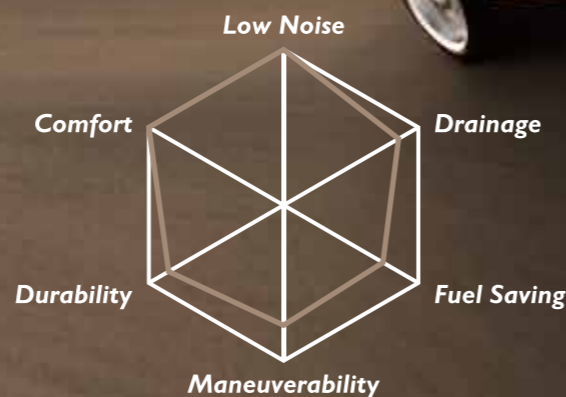
Series	Inch	Size	Load Index	Speed Index	Rim Width (Inch)	OD (mm)	SW (mm)	EU TIRE LABEL			
								RRC	Wet Grip	NoiseValue (dB)	Noise Class
70	14	205/70R14	95	H	6.0	644	209	E	B	72	3
	14	195/70R14	91	H	6.0	630	201	E	B	72	3
14	185/70R14	88	H	5.5	616	189	E	B	72	3	
14	175/70R14	88(XL)	H	5.0	602	177	E	B	72	3	
14	165/70R14	81	H	5.0	588	170	E	B	72	3	
13	185/70R13	86	H	5.5	590	189	E	B	72	3	
13	175/70R13	82	H	5.0	576	177	E	B	72	3	
13	175/70R13	82(WR)	H	5.0	576	177	E	B	72	3	
13	165/70R13	79	H	5.0	562	170	E	B	72	3	
13	155/70R13	75	H	4.5	548	157	F	B	72	3	
12	165/70R12	77	T	5.0	537	170	F	B	72	3	
12	145/70R12	69	T	4.5	509	150	F	B	72	3	

Series	Inch	Size	Load Index	Speed Index	Rim Width (Inch)	OD (mm)	SW (mm)	EU TIRE LABEL			
								RRC	Wet Grip	NoiseValue (dB)	Noise Class
80	15	165/80R15	87	T	4.5	645	165	E	B	72	3
	15	145R15	77	T	4.0	615	145	F	B	72	3
15	135R15	73	T	3.5	597	133	F	B	72	3	
14	185/80R14	91	T	5.0	652	184	E	B	72	3	
14	175/80R14	88	T	5.0	636	176	E	B	72	3	
14	155/80R14	81	T	4.5	604	157	E	B	72	3	
13	165/80R13	83	T	4.5	594	165	E	B	72	3	
13	155/80R13	79	T	4.5	578	157	E	B	72	3	
12	155/80R12	77	T	4.5	553	157	F	B	72	3	

WR=WHITE RIBBON

# N-605

# N-729



COMFORT

N-605

N-729



Four broad straight grooves increase drainage on wet ground.  
 Center Rib design enhances steady handling.  
 5 pitches pattern designed by computer simulation calculation reduces the noise generation.  
 Well tread contact patch prevents from irregular wear.



Four-Straight grooves ensure driving safety on wet roads.  
 Small sipes allocated with large block reduce the impact caused from the road, promote the comforts and reduce tire noise generation created from tread pattern.  
 Multi pitches pattern designed by computer simulation reduces tire noise generation.  
 Special tread compound design increases tire mileage to reach economical and valuable tire.

Series	Inch	Size	Load Index	Speed Index	Rim Width (Inch)	OD (mm)	SW (mm)	EU TIRE LABEL			
								RRC	Wet Grip	NoiseValue (dB)	Noise Class
50	17	P235/50R17	96	V	7.5	668	245	E	C	72	3
	17	P225/50R17	94	V	7.0	658	233	E	C	72	3
	17	P215/50R17	91	V	7.0	648	226	E	C	72	3
	15	195/50R15	82	H	6.0	577	201	F	C	72	3
55	17	P235/55R17	103(XL)	V	7.5	690	245	E	C	72	2
	17	P225/55R17	101(XL)	V	7.0	680	233	E	C	72	2
	17	P215/55R17	94	V	7.0	668	226	E	C	72	3
	16	215/55R16	97(XL)	V	7.0	642	226	E	C	72	2
16	205/55R16	91	V	6.5	632	214	E	C	72	3	
60	17	235/60R17	102	V	7.0	714	240	E	C	72	3
	16	215/65R16	102(XL)	V	6.5	686	221	E	C	72	2
65	15	195/65R15	91	V	6.0	635	201	E	C	72	3
	14	215/65R14	95	H	6.5	636	221	E	C	72	3
70	15	P225/70R15	100	H	6.5	697	228	E	C	72	3

Series	Inch	Size	Load Index	Speed Index	Rim Width (Inch)	OD (mm)	SW (mm)	EU TIRE LABEL			
								RRC	Wet Grip	NoiseValue (dB)	Noise Class
70	15	P225/70R15	100(WR)	H	6.5	697	228	E	C	72	3
	15	P215/70R15	98	H	6.5	683	221	E	C	72	3
	15	P215/70R15	98(WR)	H	6.5	683	221	E	C	72	3
	15	P205/70R15	95	H	6.0	669	209	E	C	72	3
75	15	P235/75R15	108(XL)	H	6.5	733	235	E	C	72	2
	15	P225/75R15	102(WR)	H	6.0	719	223	E	C	72	3
	15	P225/75R15	102	H	6.0	719	223	E	C	72	3
	15	P215/75R15	100	H	6.0	703	216	E	C	72	3
15	P205/75R15	97	H	5.5	689	203	E	C	72	3	
14	P205/75R14	98(XL)	H	5.5	664	203	E	C	72	2	
14	P205/75R14	98(WR)	H	5.5	664	203	E	C	72	2	
14	P195/75R14	92	H	5.5	648	196	E	C	72	3	
14	P185/75R14	89	H	5.0	634	184	E	C	72	3	
13	P165/75R13	81	H	4.5	578	165	F	C	72	3	

Series	Inch	Size	Load Index	Speed Index	Rim Width (Inch)	OD (mm)	SW (mm)	EU TIRE LABEL			
								RRC	Wet Grip	NoiseValue (dB)	Noise Class
60	15	195/60R15	88	H	6.0	615	201	N/A			
	14	195/60R14	86	H	6.0	590	201	N/A			
	14	185/60R14	82	H	5.5	578	189	N/A			
	15	195/65R15	91	H	6.0	635	201	N/A			
65	15	185/65R15	88	H	5.5	621	189	N/A			
	14	195/65R14	89(WL)	T	6.0	610	201	E	B	70	2
	14	195/65R14	89	H	6.0	610	201	N/A			
	14	185/65R14	86(WL)	T	5.5	596	189	E	B	70	2
14	185/65R14	86	H	5.5	596	189	N/A				
14	175/65R14	82	H	5.0	584	177	N/A				
13	165/65R13	77	H	5.0	544	170	N/A				

Series	Inch	Size	Load Index	Speed Index	Rim Width (Inch)	OD (mm)	SW (mm)	EU TIRE LABEL			
								RRC	Wet Grip	NoiseValue (dB)	Noise Class
70	14	195/70R14	95(WL)	T	6.0	630	201	E	B	70	2
	14	185/70R14	88(WL)	T	5.5	616	189	E	B	70	2
	14	185/70R14	88	H	5.5	616	189	N/A			
	14	175/70R14	84(WL)	T	5.0	602	177	E	B	70	2
14	175/70R14	84	H	5.0	602	177	E	B	70	2	
13	185/70R13	86(WL)	T	5.5	590	189	E	B	70	2	
13	175/70R13	82(WL)	T	5.0	576	177	E	B	70	2	
13	165/70R13	79	H	5.0	562	170	E	B	70	2	
13	165/70R13	79(WL)	T	5.0	562	170	E	B	70	2	

N/A =Values are not available at the time of publication.  
 WR=WHITE RIBBON  
 BSW=BLACK SIDEWALL



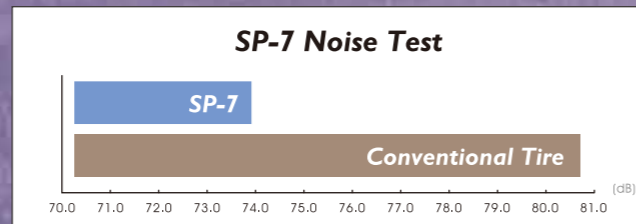
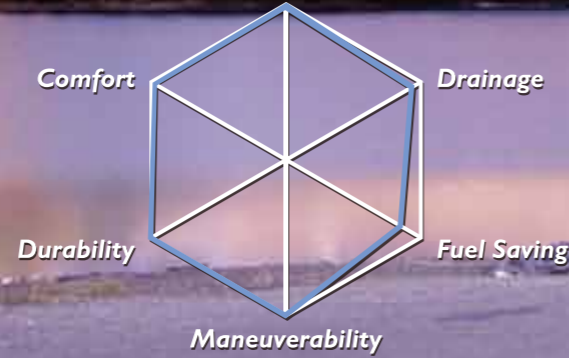


*Rollnex*

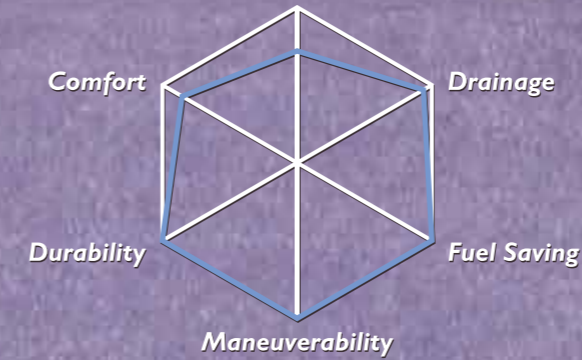
## SP-7

## SP-5

Low Noise



Low Noise



Two straight broad grooves & arc sub-grooves enhance drainage efficiency and prevent from hydroplaning.

Noise prevention bar on the shoulder groove reduces the pattern noise.

The blocks with sipes make the block stiffness feasible, and improve the premature tire wear and riding comfort.



Noise prevention bar reduces the noise generated by the pattern.

Two center wide circumferential grooves efficiently direct water away and enhance superior wet handling.

Added sipes in the block pattern normalize the tire surface hardness, thus increasing comfort and buffering the noise generated from the road.

Designed by Nankang's NSS (Noise Simulation System), the pattern is arranged to lower the noise between the pattern blocks.

Series	Inch	Size	Load Index	Speed Index	Rim Width (Inch)	OD (mm)	SW (mm)	EU TIRE LABEL			
								RRC	Wet Grip	NoiseValue (dB)	Noise Class
30	22	295/30ZR22	103(XL)	Y	10.5	737	301	E	B	72	1
	24	255/30R22	95(XL)	V	9.0	713	260	E	B	72	2
35	24	305/35R24	112(XL)	V	11.0	824	313	E	B	72	1
	24	295/35R24	110(XL)	V	10.5	816	301	E	B	72	1
	22	295/35R22	108(XL)	V	10.5	765	301	N/A			
40	22	265/35R22	102(XL)	V	9.5	745	271	E	B	72	2
	24	295/40R24	114(XL)	V	10.5	846	301	E	B	72	1
	24	285/40R24	112(XL)	V	10.0	838	290	E	B	72	1
	22	305/40R22	114(XL)	V	11.0	803	313	E	B	72	1
	22	285/40R22	110(XL)	V	10.0	787	290	N/A			
	20	295/40ZR20	110(XL)	V	10.5	744	301	E	B	72	1
45	20	275/40ZR20	106(XL)	W	9.5	728	278	E	B	72	2
	20	275/40R20	106(XL)	H	9.5	728	278	E	B	72	2
	22	305/45R22	118(XL)	V	10.0	833	303	E	B	72	1
	22	285/45R22	114(XL)	V	9.5	815	285	E	B	72	1
	20	295/45R20	114(XL)	H	10.0	774	296	E	B	72	1
	20	275/45R20	110(XL)	H	9.0	756	273	E	B	72	2
50	20	275/45R20	110(XL)	V	9.0	756	273	E	B	72	2
	20	245/45R20	99	V	8.0	728	243	N/A			
	19	285/45ZR19	111(XL)	W	9.5	739	285	E	B	72	1
	20	305/50R20	120(XL)	H	9.5	814	316	E	B	72	1
	20	285/50R20	116(XL)	V	9.0	794	297	E	B	72	1

Series	Inch	Size	Load Index	Speed Index	Rim Width (Inch)	OD (mm)	SW (mm)	EU TIRE LABEL			
								RRC	Wet Grip	NoiseValue (dB)	Noise Class
50	18	225/50R18	95	V	7.0	683	233	E	B	72	
	15	295/50R15	108	H	9.5	677	297	E	B	72	3
55	20	275/55R20	117(XL)	H	8.5	810	284	E	B	72	2
	19	275/55R19	111	V	8.5	785	284	E	B	72	2
	19	255/55R19	111(XL)	V	8.0	763	265	E	B	72	2
60	18	235/55R18	104(XL)	V	7.5	715	245	E	B	72	2
	18	225/55R18	98	V	7.0	705	233	E	B	72	2
	18	215/55R18	99	V	7.0	693	226	N/A			
	20	275/60R20	119(XL)	H	8.0	838	279	E	B	72	
	18	245/60R18	105	H	7.0	751	248	E	B	72	2
	17	275/60R17	110	T	8.0	762	279	N/A			
65	17	255/60R17	110(XL)	V	7.5	738	260	E	B	72	
	17	225/60R17	99	H	6.5	702	228	E	B	72	2
	16	275/60R16	109	H	8.0	736	279	E	B	72	3
	15	275/60R15	107	H	8.0	711	279	E	B	72	2
	15	255/60R15	102	H	7.5	687	260	E	B	72	2
70	18	225/65R18	103	H	6.5	745	224	E	B	72	2
	17	265/65R17	112	H	8.0	776	272	E	B	72	3
	17	235/70R17	111(XL)	H	7.0	768	240	E	B	72	3
	16	265/70R16	112	S	8.0	778	272	E	B	72	2
15	235/70R15	103	T	7.0	711	240	N/A				

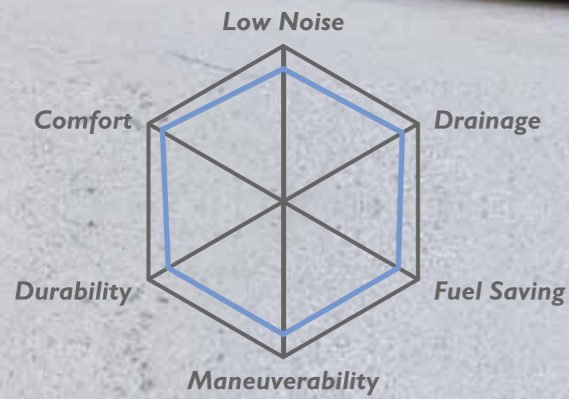
N/A = Values are not available at the time of publication.

Series	Inch	Size	Load Index	Speed Index	Rim Width (Inch)	OD (mm)	SW (mm)	EU TIRE LABEL			
								RRC	Wet Grip	NoiseValue (dB)	Noise Class
40	22	265/40R22	106(XL)	V	9.5	771	271	E	B	76	3
45	19	285/45R19	107	V	9.5	739	285	E	B	76	3
50	20	265/50R20	111(XL)	V	8.5	774	277	E	B	76	3
	20	255/50R20	109(XL)	V	8.0	764	265	E	B	76	3
55	19	255/50R19	107(XL)	V	8.0	739	265	E	B	76	3
	18	255/55R18	109(XL)	V	8.0	737	265	E	B	76	3
	18	255/55R18	109(XL)	V	8.0	737	265	N/A			
18	215/55R18	99(XL)	V	7.0	693	226	E	B	76	3	

Series	Inch	Size	Load Index	Speed Index	Rim Width (Inch)	OD (mm)	SW (mm)	EU TIRE LABEL			
								RRC	Wet Grip	NoiseValue (dB)	Noise Class
55	18	215/55R18	99(XL)	V	7.0	693	226	N/A			
	17	225/55R17	101(XL)	V	7.0	680	233	E	B	76	3
60	18	255/60R18	112(XL)	V	7.5	763	260	E	B	76	3
	18	255/60R18	112(XL)	V	7.5	763	260	N/A			
	18	235/60R18	107(XL)	V	7.0	739	240	E	B	76	3
65	17	255/60R17	110(XL)	V	7.5	738	260	E	B	76	3
	17	235/65R17	108(XL)	V	7.0	738	240	E	B	76	3
	16	215/65R16	98	V	6.5	686	221	E	B	72	3

N/A = Values are not available at the time of publication.

# FT-4



Special profile design is adopted to increase the tire rigidity and driving stability.

The tread surface is enlarged and the shoulder groove has been reduced to give better maneuverability.

5 pitches block design is adopted to reduce the noise generation.

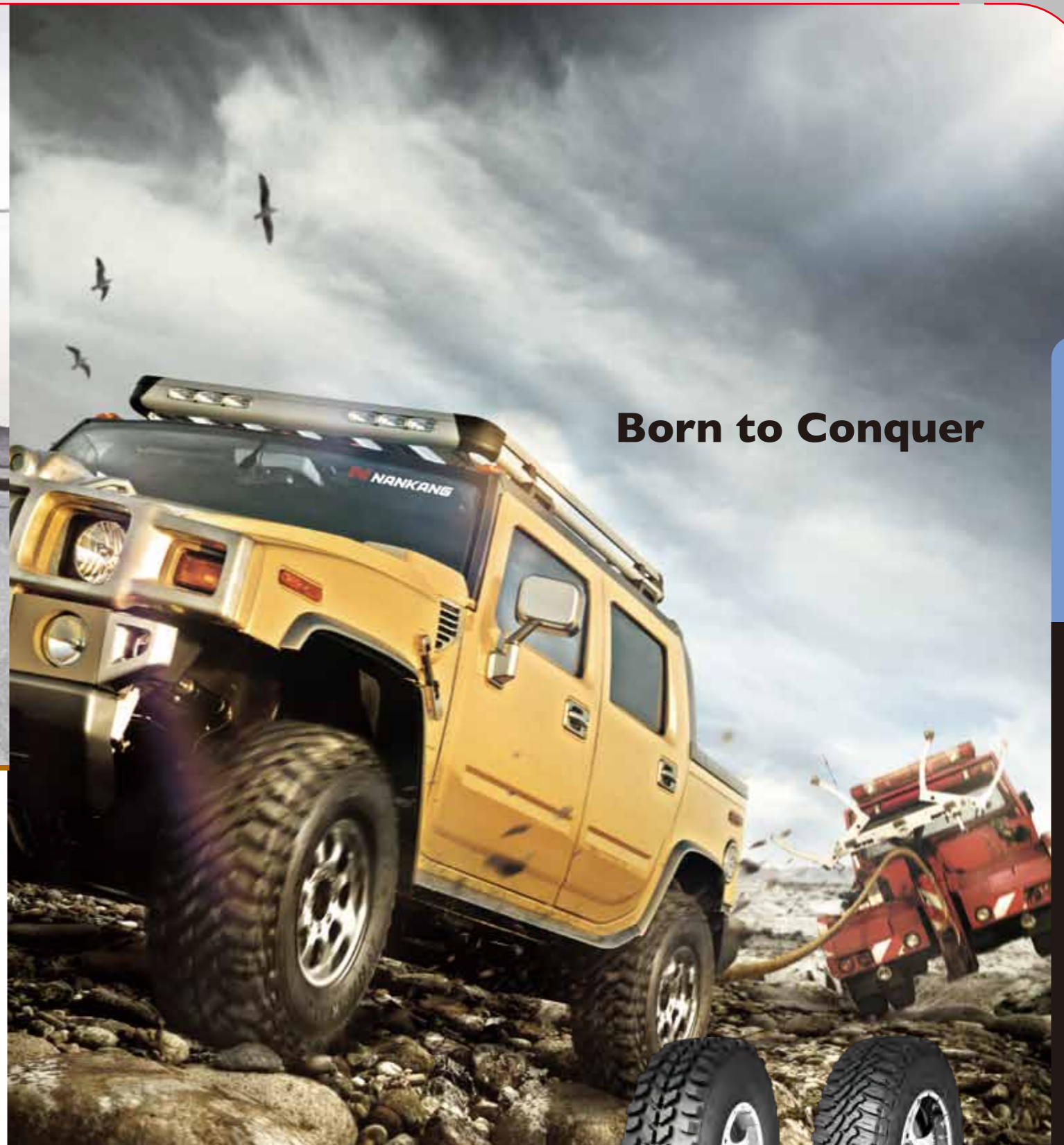
Noise prevention bar has been created on the shoulder to prevent premature wear and to reduce the road noise generation.



Series	Inch	Size	Load Index	Speed Index	Rim Width (Inch)	OD (mm)	SW (mm)	EU TIRE LABEL			
								RRC	Wet Grip	NoiseValue (dB)	Noise Class
55	18	225/55R18	98	V	7.0	705	233	N/A			
	18	235/60R18	107(XL)	V	7.0	739	240	N/A			
60	18	225/60R18	100	H	6.5	727	228	F	E	72	3
	16	235/60R16	100	H	7.0	688	240	F	E	72	3
65	17	245/65R17	111(XL)	H	7.0	750	248	E	E	72	2
	17	225/65R17	102	H	6.5	724	228	F	E	72	3
	16	255/65R16	109	H	7.5	738	260	E	E	72	2
	16	235/65R16	107	V	7.0	712	240	N/A			
	16	215/65R16	98	H	6.5	686	221	F	E	72	3
70	16	275/70R16	114	H	8.0	792	279	E	E	72	2

Series	Inch	Size	Load Index	Speed Index	Rim Width (Inch)	OD (mm)	SW (mm)	EU TIRE LABEL			
								RRC	Wet Grip	NoiseValue (dB)	Noise Class
70	16	265/70R16	112	H	8.0	778	272	E	E	72	2
	16	255/70R16	111	H	7.5	764	260	E	E	72	2
	16	245/70R16	111(XL)	H	7.0	750	248	E	E	72	2
	16	245/70R16	107	H	7.0	750	248	E	E	72	3
	16	235/70R16	106	H	7.0	736	240	F	E	72	3
	16	215/70R16	100	H	6.5	708	221	F	E	72	3
75	15	265/70R15	112	H	8.0	753	272	E	E	72	2
	15	205/70R15	96	H	6.0	669	209	F	E	72	3
	15	235/75R15	105	H	6.5	733	235	F	E	72	3

N/A = Values are not available at the time of publication.



Born to Conquer

## N-870

Designed for Hummer

Series	Inch	Size	Load Index	Speed Index	Rim Width (Inch)	OD (mm)	SW (mm)
80	16.5	37x12.50r16.5	127	M	16.5"x9.75"	928	318

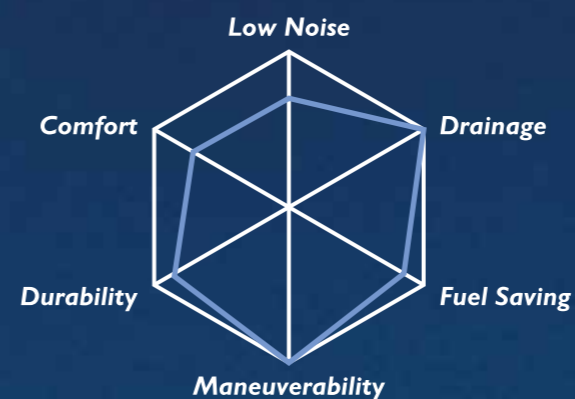


N-870

FT-9

# FT-9

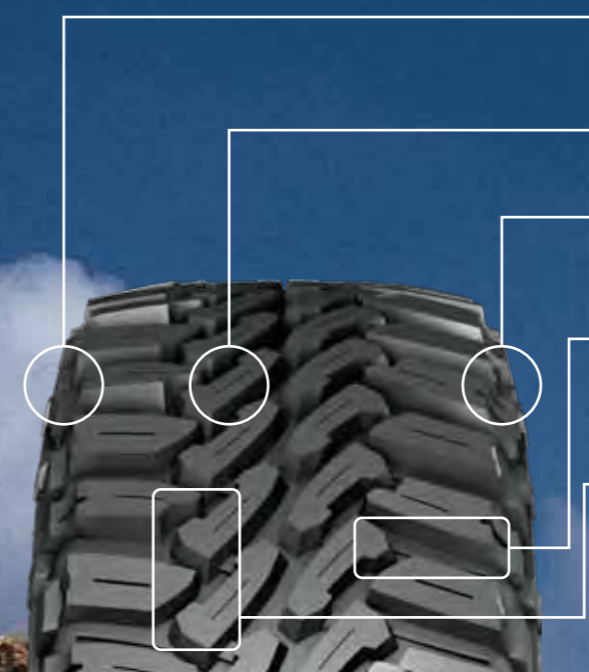
**NEW!**



TAIWAN EXCELLENCE 2012

Rollnex

FT-9



Interlocking shoulder block design can grip and exclude scree and clods to increase maneuverability, and allow the car to be navigated freely on rugged roads.

Hook-shaped blocks can increase gripping thrust on scree and clods.

The blocks extended to tread shoulders provide extra traction between blocks and scree while the tread could not touch roads.

The prominent bar on the bottom of the grooves can prevent stones from lodging in the grooves.

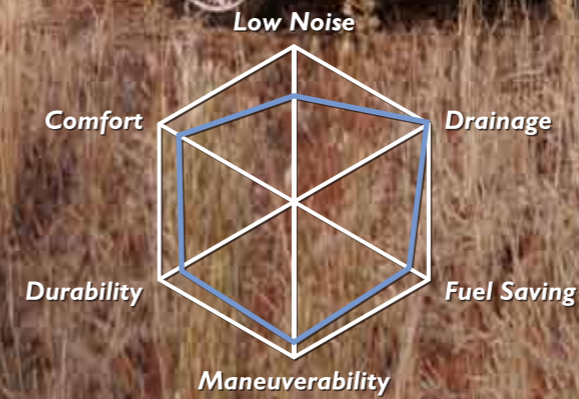
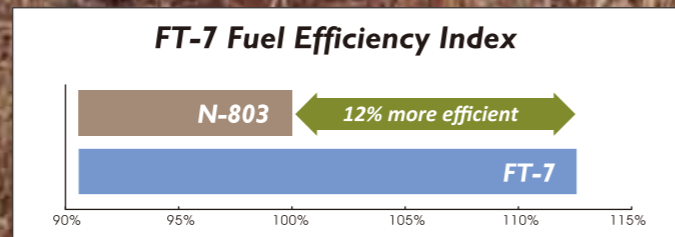
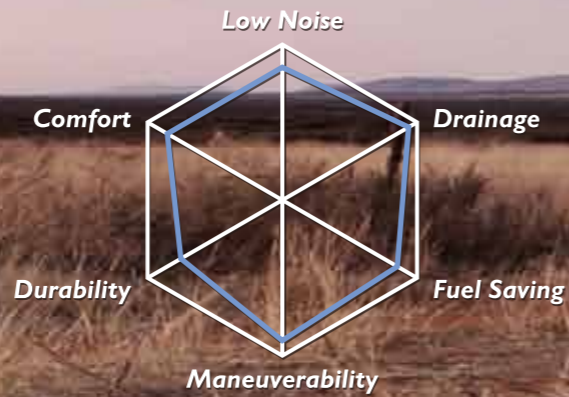
Lodged stones will be expelled by the flexible moves caused between the prominent bar and the groove wall.

Z-shaped zigzag grooves can mill the clods and adjust to all kinds of rugged roads.

Series	Inch	Size	Load Index	Speed Index	Rim Width (Inch)	OD (mm)	SW (mm)	Series	Inch	Size	Load Index	Speed Index	Rim Width (Inch)	OD (mm)	SW (mm)
4WD	17	35*12.50R17LT	119	Q	10.0	877	318	4WD	15	37*12.50R15LT	118	L	10.0	928	318
	16	LT205/80R16	110/108	Q	5.5	734	202		15	31*10.50R15LT	109	Q	8.0	801	290
	16	LT185/85R16	105/103	L	5.0	721	182		15	30*9.50R15LT	104	Q	7.5	750	240

# FT-7

# N-889



Rollnax

FT-7 N-889



Special profile increases the tire rigidity and driving stability.  
 The tread surface is broadened and the shoulder groove is reduced to give better maneuverability.  
 Zigzag main groove design is adopted for mud road condition.  
 Gradual widening sub-groove pattern is aimed to divert the gravel out more efficiently when cornering.  
 The noise prevention bar on the shoulder prevents premature wear and to reduce the road noise generation.



Special rigid shoulder and sidewall design absorbs the shake from rugged roads and reduces car bumping.  
 Stud holes design suits to all terrain. Studs can be applied to enhance the maneuverability and braking if necessary.  
 The computer-simulated blocks perform excellently on all kinds of road conditions.  
 White letter sidewall shows unique and strong characteristics.

Series	Inch	Size	Load Index	Speed Index	Rim Width (Inch)	OD (mm)	SW (mm)	EU TIRE LABEL				
								RRC	Wet Grip	NoiseValue (dB)	Noise Class	
60	20	275/60R20	115	T	8.0	838	279	F	E	73	3	
	18	255/60R18	112(XL)	H	7.5	763	260	F	E	73	2	
65	18	275/65R18	116	T	8.0	815	279	F	E	73	3	
	18	265/65R18	114	T	8.0	801	272	F	E	73	3	
	17	285/65R17	116(OW)	S	8.5	802	292	F	E	73	2	
	17	275/65R17	115(OW)	S	8.0	790	279	F	E	73	3	
	17	265/65R17	112(OW)	S	8.0	776	272	F	E	73	3	
	17	255/65R17	110	H	7.5	764	260	F	E	73	3	
70	16	255/65R16	109(OW)	S	7.5	738	260	F	E	73	3	
	16	275/70R16	114(OW)	S	8.0	792	279	F	E	73	3	
	16	265/70R16	112(OW)	S	8.0	778	272	F	E	73	3	
	16	255/70R16	111(OW)	S	7.5	764	260	F	E	73	3	
	16	245/70R16	111(OW)	S	7.0	750	248	F	E	73	3	
	16	235/70R16	106(OW)	S	7.0	736	240	F	E	73	3	
	16	225/70R16	103(OW)	S	6.5	722	228	F	E	73	3	
	15	265/70R15	112	T	8.0	753	272	N/A				
	15	205/70R15	96(OW)	T	6.0	669	209	G	E	73	3	
	75	16	265/75R16	116	T	7.5	804	267	F	E	73	3
15		235/75R15	105	S	6.5	733	235	F	E	73	3	
15		215/75R15	100	S	6.0	703	216	F	E	73	3	
15		205/75R15	97	T	5.5	689	203	N/A				
14		205/75R14	98(WL)	S	5.5	664	203	N/A				
80	16	205/80R16	104(OW)	T	5.5	734	203	F	E	73	3	

Series	Inch	Size	Load Index	Speed Index	Rim Width (Inch)	OD (mm)	SW (mm)	EU TIRE LABEL				
								RRC	Wet Grip	NoiseValue (dB)	Noise Class	
80	16	175/80R16	91	S	5.0	686	177	G	E	73	3	
	16	175/80R16	91(OW)	S	5.0	686	177	G	E	73	3	
	15	215/80R15	102(OW)	S	6.0	725	216	F	E	73	3	
	15	195/80R15	96	S	5.5	693	196	G	E	73	3	
	15	175/80R15	90	S	5.0	660	177	G	E	73	3	
4WD	17	LT315/70R17	121/118	R	9.5	874	323	F	E	73	3	
	16	LT285/75R16	126/123	Q	8.0	834	286	N/A				
	16	LT265/75R16	123/120(OW)	R	7.5	804	267	E	B	71	2	
	16	LT265/70R16	110/107	Q	8.0	778	272	F	E	73	3	
	16	LT245/75R16	120/116(OW)	R	7.0	774	248	E	E	73	3	
	16	LT235/85R16	120/116(OW)	R	6.5	806	235	E	E	73	3	
	15	LT235/75R15	104/101(OW)	S	6.5	733	235	F	E	73	3	
	15	LT215/75R15	100/97(OW)	S	6.0	703	216	N/A				
	15	31*10.50R15LT	109(OW)	S	8.5	775	268	F	E	73	3	
	15	30*9.50R15LT	104(OW)	S	7.5	750	240	F	E	73	3	
	14	LT215/75R14	98/95	Q	6.0	678	216	F	E	73	3	
	14	27*8.50R14LT	95(OW)	S	7.0	674	218	F	E	73	3	
	14	27*8.50R14LT	95	S	7.0	674	218	N/A				
	16	LT185/85R16	105/103	N	5.0	720	184	N/A				
	16	205/70R16C	110/108(OW)	Q	6.0	736	208	N/A				
15	255/70R15C	112/110(OW)	S	7.5	739	260	F	E	73	3		

N/A =Values are not available at the time of publication.

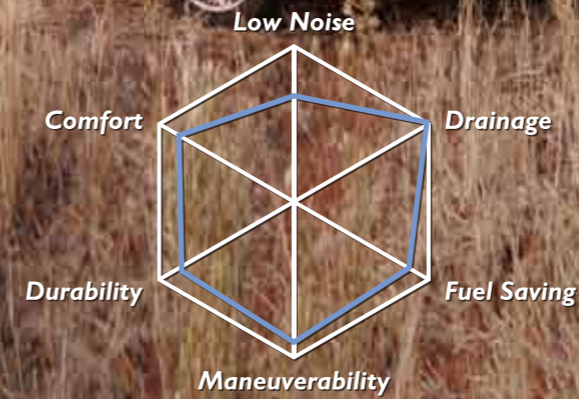
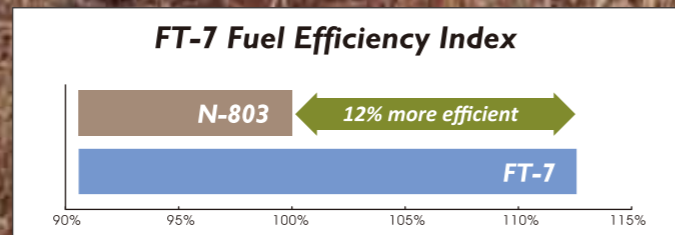
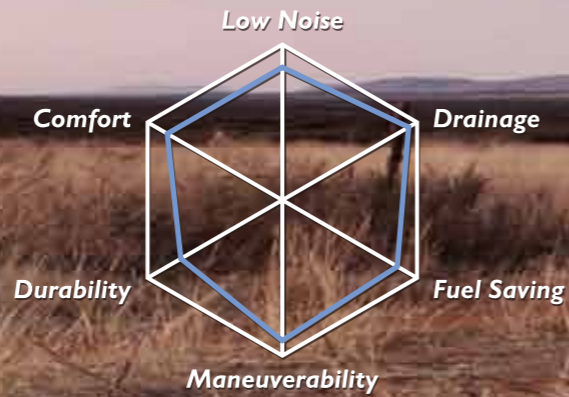
Series	Inch	Size	Load Index	Speed Index	Rim Width (Inch)	OD (mm)	SW (mm)
4WD	17	LT285/70R17	121(OW)	Q	8.5	832	292
	17	LT265/70R17	121/118(OW)	N	8.0	804	272
	17	LT265/70R17	112/109(OW)	Q	8.0	804	272
	16	LT315/75R16	121(OW)	Q	8.5	878	313
	16	LT305/70R16	118/115(OW)	Q	9.0	834	311
	16	LT285/75R16	122/119(OW)	M	8.0	834	286
16	LT265/75R16	112/109(OW)	N	7.5	804	267	
16	LT245/75R16	120/116(OW)	N	7.0	774	248	

Series	Inch	Size	Load Index	Speed Index	Rim Width (Inch)	OD (mm)	SW (mm)
4WD	16	LT245/75R16	108/104(OW)	N	7.0	774	248
	16	LT235/85R16	120/116(OW)	N	6.5	806	235
	15	LT235/75R15	104/101(OW)	Q	6.5	733	235
	15	35*12.50R15LT	113(OW)	Q	10.0	877	318
	15	33*12.50R15LT	108(OW)	Q	10.0	826	318
15	32*11.50R15LT	113(OW)	Q	9.0	801	290	
15	31*10.50R15LT	109(OW)	Q	8.5	775	268	

OW=OUTSIDE WHITE LETTER

## FT-7

## N-889



Rollnax

FT-7 N-889



Special profile increases the tire rigidity and driving stability.  
The tread surface is broadened and the shoulder groove is reduced to give better maneuverability.  
Zigzag main groove design is adopted for mud road condition.  
Gradual widening sub-groove pattern is aimed to divert the gravel out more efficiently when cornering.  
The noise prevention bar on the shoulder prevents premature wear and to reduce the road noise generation.



Special rigid shoulder and sidewall design absorbs the shake from rugged roads and reduces car bumping.  
Stud holes design suits to all terrain. Studs can be applied to enhance the maneuverability and braking if necessary.  
The computer-simulated blocks perform excellently on all kinds of road conditions.  
White letter sidewall shows unique and strong characteristics.

Series	Inch	Size	Load Index	Speed Index	Rim Width (Inch)	OD (mm)	SW (mm)	EU TIRE LABEL				
								RRC	Wet Grip	NoiseValue (dB)	Noise Class	
60	20	275/60R20	115	T	8.0	838	279	F	E	73	3	
	18	255/60R18	112(XL)	H	7.5	763	260	F	E	73	2	
65	18	275/65R18	116	T	8.0	815	279	F	E	73	3	
	18	265/65R18	114	T	8.0	801	272	F	E	73	3	
	17	285/65R17	116(OV)	S	8.5	802	292	F	E	73	2	
	17	275/65R17	115(OV)	S	8.0	790	279	F	E	73	3	
	17	265/65R17	112(OV)	S	8.0	776	272	F	E	73	3	
	17	255/65R17	110	H	7.5	764	260	F	E	73	3	
70	16	255/65R16	109(OV)	S	7.5	738	260	F	E	73	3	
	16	275/70R16	114(OV)	S	8.0	792	279	F	E	73	3	
	16	265/70R16	112(OV)	S	8.0	778	272	F	E	73	3	
	16	255/70R16	111(OV)	S	7.5	764	260	F	E	73	3	
	16	245/70R16	111(OV)	S	7.0	750	248	F	E	73	3	
	16	235/70R16	106(OV)	S	7.0	736	240	F	E	73	3	
	16	225/70R16	103(OV)	S	6.5	722	228	F	E	73	3	
	15	265/70R15	112	T	8.0	753	272	N/A				
	15	205/70R15	96(OV)	T	6.0	669	209	G	E	73	3	
	75	16	265/75R16	116	T	7.5	804	267	F	E	73	3
15		235/75R15	105	S	6.5	733	235	F	E	73	3	
15		215/75R15	100	S	6.0	703	216	F	E	73	3	
15		205/75R15	97	T	5.5	689	203	N/A				
14		205/75R14	98(WL)	S	5.5	664	203	N/A				
80		16	205/80R16	104(OV)	T	5.5	734	203	F	E	73	3

Series	Inch	Size	Load Index	Speed Index	Rim Width (Inch)	OD (mm)	SW (mm)	EU TIRE LABEL				
								RRC	Wet Grip	NoiseValue (dB)	Noise Class	
80	16	175/80R16	91	S	5.0	686	177	G	E	73	3	
	16	175/80R16	91(OV)	S	5.0	686	177	G	E	73	3	
	15	215/80R15	102(OV)	S	6.0	725	216	F	E	73	3	
	15	195/80R15	96	S	5.5	693	196	G	E	73	3	
	15	175/80R15	90	S	5.0	660	177	G	E	73	3	
4WD	17	LT315/70R17	121/118	R	9.5	874	323	F	E	73	3	
	16	LT285/75R16	126/123	Q	8.0	834	286	N/A				
	16	LT265/75R16	123/120(OV)	R	7.5	804	267	E	B	71	2	
	16	LT265/70R16	110/107	Q	8.0	778	272	F	E	73	3	
	16	LT245/75R16	120/116(OV)	R	7.0	774	248	E	E	73	3	
	16	LT235/85R16	120/116(OV)	R	6.5	806	235	E	E	73	3	
	15	LT235/75R15	104/101(OV)	S	6.5	733	235	F	E	73	3	
	15	LT215/75R15	100/97(OV)	S	6.0	703	216	N/A				
	15	31*10.50R15LT	109(OV)	S	8.5	775	268	F	E	73	3	
	15	30*9.50R15LT	104(OV)	S	7.5	750	240	F	E	73	3	
	14	LT215/75R14	98/95	Q	6.0	678	216	F	E	73	3	
	14	27*8.50R14LT	95(OV)	S	7.0	674	218	F	E	73	3	
	14	27*8.50R14LT	95	S	7.0	674	218	N/A				
	16	LT185/85R16	105/103	N	5.0	720	184	N/A				
	16	205/70R16C	110/108(OV)	Q	6.0	736	208	N/A				
15	255/70R15C	112/110(OV)	S	7.5	739	260	F	E	73	3		

N/A = Values are not available at the time of publication.

Series	Inch	Size	Load Index	Speed Index	Rim Width (Inch)	OD (mm)	SW (mm)
4WD	17	LT285/70R17	121(OV)	Q	8.5	832	292
	17	LT265/70R17	121/118(OV)	N	8.0	804	272
	17	LT265/70R17	112/109(OV)	Q	8.0	804	272
	16	LT315/75R16	121(OV)	Q	8.5	878	313
	16	LT305/70R16	118/115(OV)	Q	9.0	834	311
	16	LT285/75R16	122/119(OV)	M	8.0	834	286
16	LT265/75R16	112/109(OV)	N	7.5	804	267	
16	LT245/75R16	120/116(OV)	N	7.0	774	248	

Series	Inch	Size	Load Index	Speed Index	Rim Width (Inch)	OD (mm)	SW (mm)
4WD	16	LT245/75R16	108/104(OV)	N	7.0	774	248
	16	LT235/85R16	120/116(OV)	N	6.5	806	235
	15	LT235/75R15	104/101(OV)	Q	6.5	733	235
	15	35*12.50R15LT	113(OV)	Q	10.0	877	318
	15	33*12.50R15LT	108(OV)	Q	10.0	826	318
	15	32*11.50R15LT	113(OV)	Q	9.0	801	290
15	31*10.50R15LT	109(OV)	Q	8.5	775	268	

OV=OUTSIDE WHITE LETTER

# NK VAN



# CW-25

# CW-20



To make driving comfortable, zigzag grooves decrease pattern noise, and more comfortable drive.

CW-25 is a NANKANG new generation commercial tire which emphasizes on enduring and wear performance ability.

Special tread compound increases its wear performance ability.

The excellent pattern design enhances rigidity to provide the best loading capacity.



Optimal lateral groove reduces the noise generated from air consonance and increases riding comfort.

Four-straight grooves ensure driving safety on wet ground.

Shoulder rigidity enhancement prevents from irregularly wearing and is suitable for long distance driving.

Sipes on the bottom of shoulder grooves keep tread soft and riding comfort in terminal wearing stage.

Series	Inch	Size	Load Index	Speed Index	Rim Width (Inch)	OD (mm)	SW (mm)	EU TIRE LABEL			
								RRC	Wet Grip	NoiseValue (dB)	Noise Class
VAN	14	175/65R14C	90/88	T	5.0	584	177	F	C	72	2
	15	225/70R15C	116/114	Q	6.5	697	228	E	C	72	2
	15	225/70R15C	112/110	S	6.5	697	228	E	C	72	2
	15	215/70R15C	109/107	R	6.5	683	221	E	C	72	2
	15	195/70R15C	104/102	S	6.0	655	201	E	C	72	2
	14	165/70R14C	89/87	T	5.0	588	170	F	C	72	2
	16	225/75R16C	121/120	R	6.0	744	223	N/A			
	16	195/75R16C	110/108	N	5.5	698	196	N/A			
	14	185/75R14C	102/100	P	5.0	634	184	E	C	72	2
	15	195/80R15C	107/105	L	5.5	688	196	N/A			
	15	195/80R15C	107/105	N	5.5	688	196	E	C	72	2
	15	195R15C	106/104	R	5.5	690	198	E	C	72	2
	15	185R15C	103/102	R	5.5	674	188	E	C	72	2

Series	Inch	Size	Load Index	Speed Index	Rim Width (Inch)	OD (mm)	SW (mm)	EU TIRE LABEL			
								RRC	Wet Grip	NoiseValue (dB)	Noise Class
VAN	14	215R14C	112/110	R	6.0	700	218	E	C	72	2
	14	205R14C	109/107	R	6.0	686	208	E	C	72	2
	14	195R14C	106/104	S	5.5	666	198	E	C	72	2
	14	185R14C	102/100	R	5.5	650	188	E	C	72	2
	14	175R14C	99/98	R	5.0	634	178	E	C	72	2
	14	165R14C	97/95	R	4.5	622	167	F	C	72	2
	13	185R13C	100/98	Q	5.5	624	188	E	C	72	2
	13	175R13C	97/95	Q	5.0	608	178	F	C	72	2
	13	165R13C	94/92	Q	4.5	596	167	F	C	72	2
	13	155R13C	90/88	R	4.5	578	157	F	C	72	2
	12	155R12C	88/86	Q	4.5	550	157	F	C	72	2
	12	145R12C	86/84	N	4.0	544	145	E	C	72	2
	12	145R12C	81/79	N	4.0	537	145	F	C	72	2

N/A =Values are not available at the time of publication.

Series	Inch	Size	Load Index	Speed Index	Rim Width (Inch)	OD (mm)	SW (mm)	EU TIRE LABEL			
								RRC	Wet Grip	NoiseValue (dB)	Noise Class
VAN	18	225/50R18C	107/105	N	7.0	683	233	E	E	72	2
	17	215/60R17C	109/107	N	6.5	690	221	E	E	72	2
	16	235/65R16C	115/113	R	7.0	712	240	E	E	72	2
	16	225/65R16C	112/110	S	6.5	698	228	E	E	72	2
	16	215/75R16C	116/114	S	6.0	728	216	C	E	72	2
	16	215/70R16C	108/106	T	6.5	708	221	E	E	72	2
	16	215/65R16C	109/107	T	6.5	686	221	E	E	72	2
	16	215/60R16C	108/106	T	6.5	664	221	E	E	72	2
	16	205/75R16C	110/108	R	5.5	714	203	E	E	72	2
	16	205/65R16C	107/105	T	6.0	672	209	E	E	72	2

Series	Inch	Size	Load Index	Speed Index	Rim Width (Inch)	OD (mm)	SW (mm)	RRC	Wet Grip	NoiseValue (dB)	Noise Class
16	195/65R16C	104/102	T	6.0	660	201	E	E	72	2	
16	195/60R16C	99/97	H	6.0	640	201	E	E	72	2	
16	185/75R16C	104/102	R	5.0	684	184	E	E	72	2	
16	175/75R16C	101/99	R	5.0	668	177	E	E	72	2	
15	215/70R15C	109/107	P	6.5	683	221	E	E	72	2	
15	205/70R15C	106/104	S	6.0	669	209	E	E	72	2	
15	205/65R15C	102/100	T	6.0	647	209	E	E	72	2	
14	205/70R14C	102/100	P	6.0	644	209	E	E	72	2	
14	185/75R14C	102/100	P	5.0	634	184	E	E	72	2	



# LIGHT TRUCK & BUS

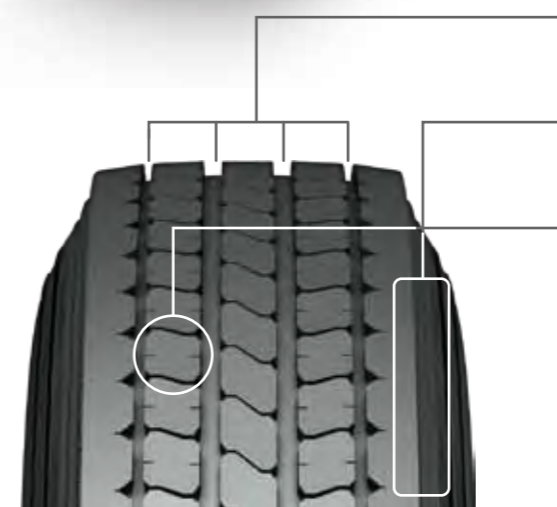


# NR-066



LIGHT TRUCK & BUS

NR-066



The arrangement of the tread pattern pitches, which is designed through computer simulation, reduce the generation of noise.

The sidewall horizontal ratio is enlarged to ensure endurance, safety and smooth driving.

The deeper tread groove ensures great gripping ability and reduces the noise at the later stage of tire use.

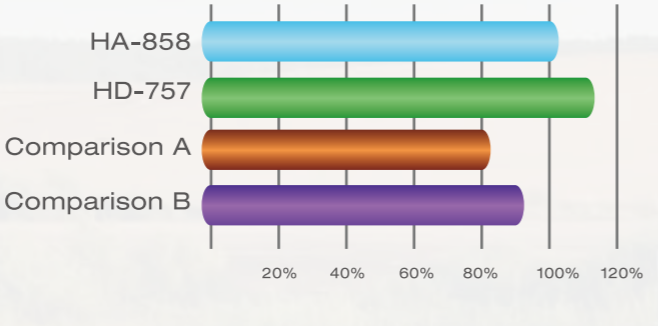
Series	Inch	Size	Load Index	Speed Index	Rim Width (Inch)	OD (mm)	SW (mm)	EU TIRE LABEL			
								RRC	Wet Grip	NoiseValue (dB)	Noise Class
LTR	16	7.50R16	122/120	L	6.0	802	213	F	B	68	1
	16	7.00R16	117/116	L	5.5	777	197	F	B	68	1
	16	6.50R16	108/107	N	5.5	750	185	F	B	68	1
	15	7.50R15	120/118	L	6.0	776	211	F	B	68	1

Series	Inch	Size	Load Index	Speed Index	Rim Width (Inch)	OD (mm)	SW (mm)	EU TIRE LABEL			
								RRC	Wet Grip	NoiseValue (dB)	Noise Class
LTR	15	7.00R15	114/112	L	5.5	751	197	F	B	68	1
	15	7.00R15	111/109	L	5.5	752	197	F	B	68	1
	15	6.50R15	103/102	N	5.5	730	187	F	B	68	1

## HA-858

## HD-757

### Durability test



• Recommend position



• Recommend position



The full-axis tire that is suitable for expressway and general pavement.

With design of four straight grooves that can strengthen the draining function for tire and further improve the maneuverability on wet field.

Reinforced structure design that can enhance the durability and safety of tire, as well as provide excellent maneuverability.

With design of multi-angle furrow bank together with gravel-block strip at bottom of the flute that can effectively minimize the probability of gravels being stuck in, then further protect the tread and lengthen the service life of tire, as well as reduce the maintenance cost.



The drive axle tire that is suitable for general pavement and unpaved road.

With design of interlaced pattern block at central part of tread and bulk pattern at the outside that can strengthen the draining function and provide traction, then further improve the performance when drive on well field and unpaved road.

Reinforced structure design that can enhance the durability and safety of tire, as well as provide excellent maneuverability.

The depth of horizontal groove at shoulder area was shallowed that can reinforce the rigidity at the medium and later stage of abrasion, then further lengthen the service life of tire and reduce the maintenance cost.

Series	Inch	Size	Load Index	Speed Index	Rim Width (Inch)	OD (mm)	SW (mm)	EU TIRE LABEL			
								RRC	Wet Grip	NoiseValue (dB)	Noise Class
LTS	19.5	245/70R19.5	136/134	J	7.5	839	248				N/A
	17.5	235/75R17.5	132/130	M	6.75	797	233				N/A
	17.5	225/75R17.5	129/127	M	6.75	783	226				N/A
	17.5	215/75R17.5	126/124	M	6.0	767	212				N/A
	17.5	205/75R17.5	124/122	M	6.0	753	205				N/A

Series	Inch	Size	Load Index	Speed Index	Rim Width (Inch)	OD (mm)	SW (mm)	EU TIRE LABEL			
								RRC	Wet Grip	NoiseValue (dB)	Noise Class
LTS	17.5	225/80R17.5	123/122	L	6.75	805	226				N/A
	17.5	225/90R17.5	127/125	L	6.75	851	226				N/A
	17.5	8.5R17.5	121/120	L	6.0	802	215				N/A
	16	7.50R16	123/122	K	6.0	805	211				N/A

N/A = Values are not available at the time of publication.

Series	Inch	Size	Load Index	Speed Index	Rim Width (Inch)	OD (mm)	SW (mm)	EU TIRE LABEL			
								RRC	Wet Grip	NoiseValue (dB)	Noise Class
LTS	19.5	245/70R19.5	136/134	J	7.50	839	248				N/A
	17.5	235/75R17.5	132/130	M	6.75	797	233				N/A
	17.5	225/75R17.5	129/127	M	6.75	783	226				N/A
	17.5	215/75R17.5	126/124	M	6.0	767	212				N/A
	17.5	205/75R17.5	124/122	M	6.0	753	205				N/A

Series	Inch	Size	Load Index	Speed Index	Rim Width (Inch)	OD (mm)	SW (mm)	EU TIRE LABEL			
								RRC	Wet Grip	NoiseValue (dB)	Noise Class
LTS	17.5	225/80R17.5	123/122	L	6.75	805	226				N/A
	17.5	225/90R17.5	127/125	L	6.75	851	226				N/A
	17.5	8.5R17.5	121/120	L	6.0	802	215				N/A
	16	7.50R16	123/122	K	6.0	805	211				N/A

N/A = Values are not available at the time of publication.

Inch UP



70 Series		65 / 60 / 55 / 50 / 45 / 40 Series				
70 Series	65 Series	60 Series	55 Series	50 Series	45 Series	40 Series
145/70R12	155/65R12 145/65R13	165/60R12 155/60R13 165/60R13	155/55R14			
155/70R12	155/65R13	165/60R13 175/60R13				
165/70R12	165/65R13	175/60R13 185/60R13 195/60R13	185/55R14			
175/70R12		185/60R13 195/60R13				
145/70R13	155/65R13 165/65R13	165/60R13 175/60R13 185/60R13	165/55R14	165/50R15		
155/70R13	165/65R13 155/65R14	175/60R13 185/60R13 195/60R13 165/60R14	185/55R14 165/55R15			
165/70R13	195/65R13 165/65R14 175/65R14	185/60R13 195/60R13 205/60R13 175/60R14 185/60R14	185/55R14 195/55R14 185/55R15	195/50R15	195/45R16	
175/70R13	195/65R13 175/65R14 185/65R14	195/60R13 205/60R13 185/60R14 195/60R14 185/60R15	195/55R14 195/55R15	195/50R15 205/50R15 215/50R15	205/45R16	
185/70R13	195/65R13 185/65R14 195/65R14	205/60R13 195/60R14 205/60R14 195/60R15	205/55R15	215/50R15 225/50R15 205/50R16	215/45R16	
165/70R14	175/65R14 185/65R14 165/65R15	185/60R14 195/60R14 205/60R14 175/60R15 185/60R15	195/55R14 185/55R15 195/55R15	195/50R15 205/50R15 215/50R15 195/50R16	205/45R16	
175/70R14	185/65R14 195/65R14 205/65R14 175/65R15 185/65R15	195/60R14 205/60R14 185/60R15 195/60R15 205/60R15	195/55R15 205/55R15 215/55R15 195/55R16 205/55R16	205/50R15 215/50R15 225/50R15 205/50R16 215/50R16	215/45R16 245/45R16 205/45R17	
185/70R14	195/65R14 205/65R14 215/65R14 185/65R15 195/65R15 205/65R15	205/60R14 195/60R15 205/60R15 215/60R15 195/60R16	215/55R15 205/55R16 215/55R16	215/50R15 225/50R15 215/50R16 225/50R16 205/50R17	245/45R16 225/45R17	245/40R17 255/40R17
195/70R14	205/65R14 215/65R14 195/65R15 205/65R15	205/60R15 215/60R15 205/60R16	215/55R16 225/55R16	225/50R15 225/50R16 245/50R16 215/50R17	245/45R16 245/45R17	245/40R17 255/40R17
205/70R14	215/65R14 205/65R15 215/65R15 205/65R16	215/60R15 215/60R16	225/55R16	245/50R16 225/50R17 235/50R17	245/45R16 245/45R17	255/40R17
195/70R15	205/65R15 215/65R15 205/65R16	215/60R15 205/60R16 215/60R16 225/60R16 205/60R17	225/55R16	225/50R16 245/50R16 235/50R17 235/50R17	245/45R16 235/45R17 245/45R17 235/45R18	255/40R17 245/40R18 255/40R18
205/70R15	215/65R15 205/65R16 215/65R16	215/60R16 225/60R16 235/60R16 215/60R17	225/55R17	245/50R16 235/50R17 225/50R18 235/50R18	245/45R17 245/45R18	255/40R18
215/70R15	215/65R16 235/65R16	225/60R16 235/60R16 225/60R17		245/50R16		
225/70R15	235/65R16 225/65R17	235/60R16				
235/70R15	235/65R16 255/65R16					
255/70R15	255/65R16					
265/70R15	265/65R17	265/60R18				
205/70R16	215/65R16 235/65R16 225/65R17	225/60R16 235/60R16 225/60R17	225/55R18 235/55R18	235/50R18		
215/70R16	235/65R16 225/65R17	235/60R16 225/60R17 225/60R18	235/55R18			
225/70R16	235/65R16 255/65R16 235/65R17 225/65R18	245/60R18				
235/70R16	255/65R16					
245/70R16	255/65R16 265/65R17	265/60R18 245/60R19				
255/70R16	255/65R16 265/65R17 275/65R17	265/60R18 275/60R18				
265/70R16	265/65R17 275/65R17	275/60R18				
275/70R16	275/65R17					
245/70R17	265/65R17 275/65R17	265/60R18 275/60R18				

65 Series		60 / 55 / 50 / 45 / 40 / 35 Series				
65 Series	60 Series	55 Series	50 Series	45 Series	40 Series	35 Series
155/65R12	165/65R12					
145/65R13	155/60R13 165/60R13	155/55R14				
155/65R13	165/60R13 175/60R13		165/50R15			
165/65R13	175/60R13 185/60R13 195/60R13	185/55R14				
195/65R13	205/60R13					
145/65R14	165/60R14	165/55R14	165/50R15			
155/65R14	165/60R14 175/60R14	185/55R14 195/55R14 165/55R15 175/55R15				
165/65R14	175/60R14 185/60R14 195/60R14	185/55R14 195/55R14 205/55R14	195/50R15 205/50R15	195/45R16		
175/65R14	185/60R14 195/60R14 205/60R14 185/65R15	195/55R14 195/55R15	195/50R15 205/50R15 215/50R15	205/45R16		
185/65R14	195/60R14 205/60R14	205/55R15	215/50R15 225/50R15 205/50R16	215/45R16		
195/65R14	205/60R14 205/60R15	215/55R15	225/50R15 215/50R16			
205/65R14	205/60R15 215/60R15		225/50R15 225/50R16	245/45R16	245/40R17	
215/65R14	215/60R15			245/45R16	255/40R17	
145/65R15	155/60R15 165/60R15	165/55R15 175/55R15	165/50R15 195/50R15 165/50R16			
165/65R15	175/60R15 185/60R15	185/55R15 195/55R15 205/55R15 185/55R16	195/50R15 205/50R15 215/50R15 225/50R15 195/50R16	205/45R16 215/45R16	215/40R17	
175/65R15	185/60R15 195/60R15 205/60R15	195/55R15 205/55R15 195/55R16	205/50R15 215/50R15 225/50R15 195/50R16 205/50R16 215/50R16	215/45R16 205/45R17		
185/65R15	195/60R15 205/60R15 215/60R15 195/60R16	215/55R15 205/55R16	215/50R15 225/50R15 215/50R16 225/50R16 205/50R17	245/45R16 225/45R17	245/40R17	
195/65R15	205/60R15 215/60R15 205/60R16	215/55R16	225/50R15 225/50R16 245/50R16 215/50R17	245/45R16 235/45R17 235/40R18	245/40R17	
205/65R15	215/60R15 215/60R16	225/55R16	245/50R16 225/50R17 235/50R17	245/45R16 245/45R17	255/40R17	
215/65R15	225/60R15 225/60R16		245/50R16 245/50R17			
205/65R16	215/60R16 225/60R16 235/60R16 215/60R17	225/55R17	245/50R16 235/50R17 225/50R18	245/45R17 245/45R18	255/40R18	
215/65R16	225/60R16					285/35R19
235/65R17	245/60R18					
265/65R17	275/60R18					
225/65R18	245/60R18 265/60R18					

60 Series		55 / 50 / 45 / 40 / 35 Series			
60 Series	55 Series	50 Series	45 Series	40 Series	35 Series
165/60R14	185/55R14 195/55R14 165/55R15 175/55R15				
175/60R14	185/55R14 195/55R14	195/50R15			
185/60R14	195/55R14	195/50R15 205/50R15	205/45R16		
195/60R14	185/55R15 205/60R14	215/50R15 225/50R15	215/45R16		
155/60R15	165/55R15 175/55R15	195/50R15 195/50R15			
165/60R15	175/55R15 185/55R15	195/50R15 205/50R15	195/45R16 205/45R16		
175/60R15	185/55R15 195/55R15 205/55R15 185/55R16	195/50R15 205/50R15 215/50R15 195/50R16	205/45R16 215/45R16 215/45R17	215/40R17	
185/60R15	195/55R15 205/55R15 215/55R15 195/55R16	205/50R15 215/50R15 225/50R15 205/50R16	215/45R16		
195/60R15	215/55R15 205/55R16 215/55R16	215/50R15 225/50R15 215/50R16	245/45R16	245/40R17	
205/60R15	215/55R16	225/50R15 225/50R16	245/45R16	245/40R17 255/40R17	
215/60R15	225/55R16	245/50R16	245/45R16	255/40R17 255/40R17	
175/60R16	185/55R16 195/55R16 205/55R16	195/50R16 205/50R16 215/50R16 225/50R16	205/45R16 215/45R16 215/45R17	215/40R17 245/40R17	
195/60R16	205/55R16 215/55R16 225/55R16	215/50R16 225/50R16 245/50R16 205/50R17 215/50R17	245/45R16 225/45R17 235/45R17 245/45R17	245/40R17 255/40R17 235/40R18	255/35R18
205/60R16	225/55R16 215/55R17	225/50R16 245/50R16	245/45R16 235/45R17	255/40R17 245/40R18	
215/60R16	225/55R17	245/50R16 235/50R17 225/50R18	245/45R17 245/45R18	255/40R18	
225/60R16		245/50R16			285/35R19
205/60R17	225/55R17 215/55R18	225/50R17 235/50R17 225/50R18	245/45R17 255/40R17 235/40R18	245/40R18 245/40R19	
215/60R17	225/55R18	235/50R17 235/50R18	245/45R18		285/35R19
225/60R17	235/55R18				285/35R19

INCH UP

55 Series 50 / 45 / 40 / 35 Series				
55 Series	50 Series	45 Series	40 Series	35 Series
165/55R14	165/50R15			
195/55R14	195/50R15 205/50R15			
165/55R15	195/50R15 165/50R16			
175/55R15	195/50R15 205/50R15	195/45R16		
185/55R15	195/50R15 205/50R15 215/50R15 195/50R16	205/45R16		
195/55R15	205/50R15 215/50R15 225/50R15 195/50R16 205/50R16	215/45R16		
205/55R15	215/50R15 225/50R15 205/50R16 215/50R16	245/45R16		
215/55R15	225/50R15 215/50R16 225/50R16	245/45R16	245/40R17	
185/55R16	195/50R16 205/50R16 215/50R16	205/45R16 215/45R16 205/45R17	215/40R17	
195/55R16	205/50R16 215/50R16 225/50R16 205/50R17	215/45R16 245/45R16 215/45R17	245/40R17	
205/55R16	215/50R16 225/50R16 245/50R16 205/50R17 215/50R17	245/45R16 225/45R17 235/45R17	245/40R17 255/40R17 235/40R18	255/35R18
215/55R16	225/50R16 245/50R16 215/50R17 225/50R17	245/45R16 235/45R17 245/45R17	245/40R17 255/40R17 235/40R18 245/40R18	
225/55R16	245/50R16 225/50R17 235/50R17	245/45R16 245/45R17	255/40R17 255/40R18	
205/55R17	215/50R17 225/50R17 235/50R17	235/45R17 245/45R17 225/45R18 235/45R18	245/40R17 255/40R17 235/40R18 245/40R18 255/40R18	255/35R19
215/55R17	225/50R17 235/50R17 225/50R18	235/45R17 245/45R17 235/45R18	255/40R17 245/40R18 255/40R18	
225/55R17	235/50R17 225/50R18 235/50R18	245/45R17 245/45R18	255/40R18	285/35R19
205/55R18	225/50R18 235/50R18	225/45R18 235/45R18 245/45R18	245/40R18 255/40R18 245/40R19	
215/55R18	225/50R18 235/50R18	235/45R18 245/45R18 245/45R19	255/40R18 245/40R19	285/35R19
225/55R18	235/50R18	245/45R19		285/35R19

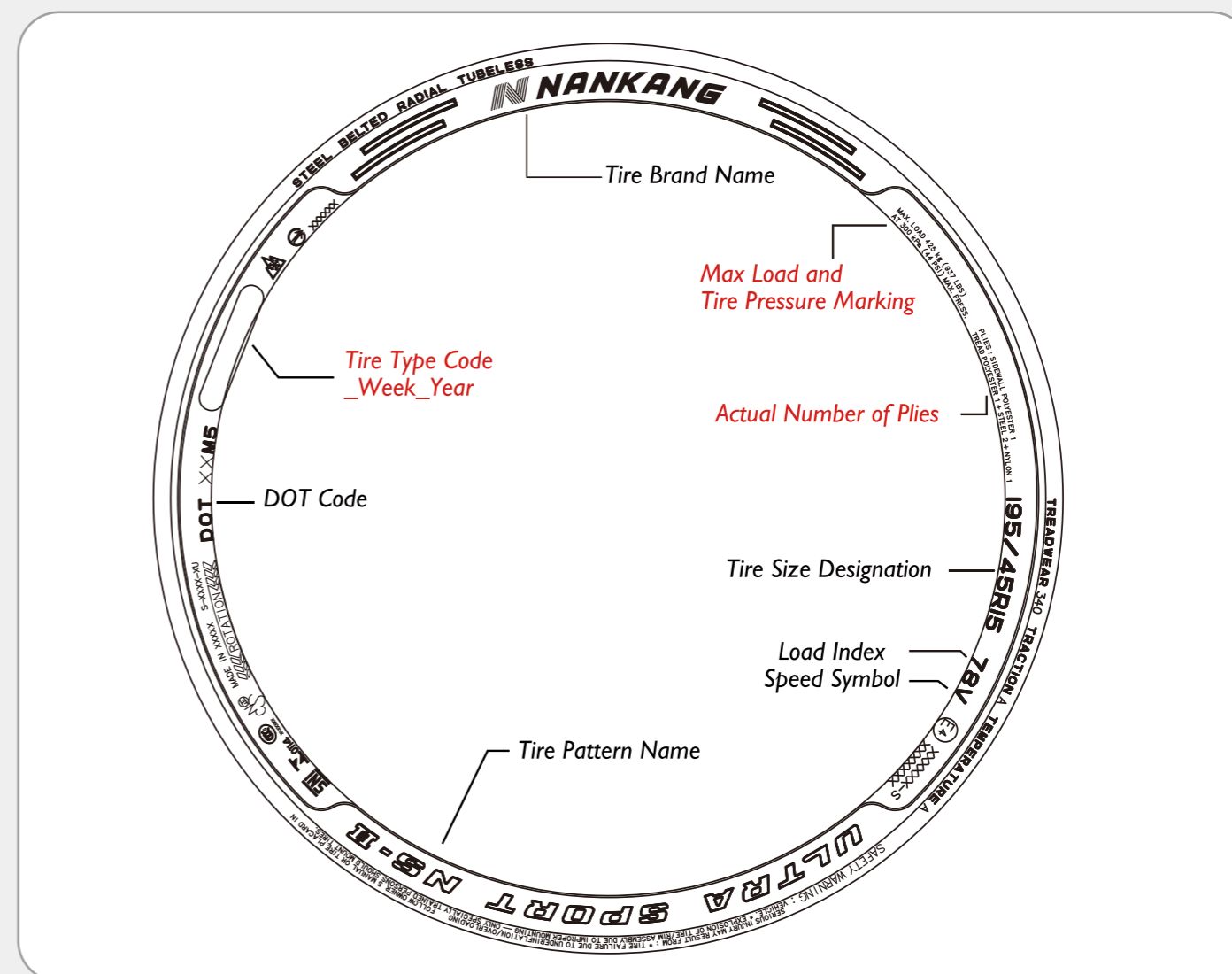
50 Series 45 / 40 / 35 Series			
50 Series	45 Series	40 Series	35 Series
195/50R15	205/45R16		
205/50R15	215/45R16		
225/50R15	245/45R16		
165/50R16	195/45R16		
195/50R16	215/45R16 205/45R17		
205/50R16	245/45R16 215/45R17		
215/50R16	245/45R16 225/45R17	245/40R17 255/40R17	255/35R18
225/50R16	245/45R16 235/45R17	255/40R17	
205/50R17	225/45R17 235/45R17 245/45R17	245/40R17 255/40R17 235/40R18	255/35R18
215/50R17	235/45R17 245/45R17 225/45R18	245/40R17 255/40R17 235/40R18	
225/50R17	245/45R17 235/45R18 245/45R18	255/40R17 255/40R18	
235/50R17	245/45R18		
225/50R18	245/45R18	255/40R18	285/35R19
235/50R18	245/45R19		285/35R19

45 Series 40 / 35 Series		
45 Series	40 Series	35 Series
195/45R16	205/40R17	
205/45R16	215/40R17	
205/45R17	245/40R17 255/40R17 215/40R18	
215/45R17	245/40R17 255/40R17 225/40R18 235/40R18	255/35R18
225/45R17	245/40R17 255/40R17 235/40R18	255/35R18
235/45R17	255/40R17 245/40R18 255/40R18	
245/45R17	255/40R18	
215/45R18	235/40R18 245/40R18 255/40R18	255/35R18 255/35R19
225/45R18	235/40R18 245/40R18 255/40R18	255/35R19
235/45R18	255/40R18 245/40R19	285/35R19
245/45R18		285/35R19
225/45R19	245/40R19	255/35R19 285/35R19
245/45R19		285/35R19

40 Series 35 Series	
40 Series	35 Series
215/40R18	255/35R18
225/40R18	255/35R18
235/40R18	255/35R19
225/40R19	255/35R19 285/35R19
245/40R19	285/35R19

INCH UP

## Tire Sidewall Marking Descriptions



### United States Department of Transportation Safety Standards

United States Department of Transportation regulation "Federal Motor Vehicle Safety Standards", tire must be marked as follows:

#### Manufactured Date



#### Tire marked with DOT indicates

- a. Registered with U.S. DOT
- b. Passes certification of U.S. DOT regulated safety standards testing

#### Tire Pressure Marking

MAX LOAD ( ) LBSat ( ) PSI MAX. PRESSURE

(Example) When inflation pressure is 36PSI (max), the maximum load is 1135 LBS.

Note: The maximum tire load and inflation pressure for a cold tire.

Note: During normal use, please follow the marked inflation pressure on the tire. Do not exceed the maximum pressure.

#### Actual number of plies

PLIES: SIDEWALL POLYESTER X

TRADE POLYESTER X+STELL X+NYLON X

# Safety

### Choosing a tire and replacement

Follow the original vehicle manufacturer OE rim specifications and discuss with a professional tire shop before making a replacement. All tires used must be of identical specifications and tread pattern. Do not mix different models, structures, or sizes of tires, to avoid accidents. Tires are marked with a direction on the sidewall and are to be installed in that direction.

### Correct use and daily inspection

#### Tire Pressure

Measure the tire pressure when the tire is cold and inflate to originally specified pressure.

#### Tread Wear Indicator

Minimum tread depth is limited to 1.6mm.

There are 6 on the circumference of the tire marked "remaining tread"

#### Caution

Check the tire surface for cracks, pins, metal scraps, glass or anything that may puncture the tire. Also, check for pebbles stuck between the treads. If any of the above situations occur, please go to a professional tire shop for repair.

Do not use a tire with damage through which the underlying fabric or steel belt is visible, to prevent accidents.

Mounting a tire to rim should be following the instruction of direction.

The tires should be rotated according to specifications.

If the tire crown is abnormally worn (damage), please go to a professional tire shop for replacement.

Avoid direct sunlight, rain, oil, and electric sparks in tire storage locations.

The tire is made of rubber and will deteriorate after a long period of use, and should be periodically inspected. Nankang doesn't guaranty tire whichever five years off from manufactured date the tires should be inspected regularly by the shop; tire over 10 years old must be replaced.

### Important Precautions for Drivers

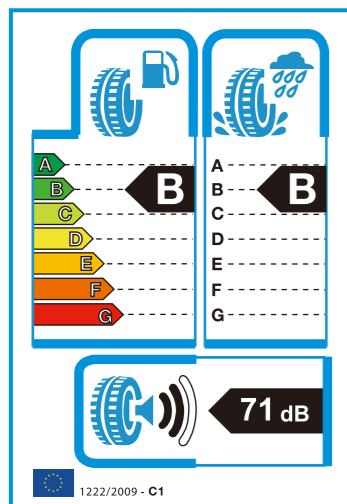
Avoid grinding the sidewall against the curb and running over bumpy surfaces, to limit damage to the tires.

Avoid sharp cornering, quick stops, and rapid acceleration, to prevent accidents from happening.

Keep a safe driving distance and obey the speed limit.

When you feel vibration from the vehicle or steering wheel, inspect the tires or return them to the factory for a checkup.

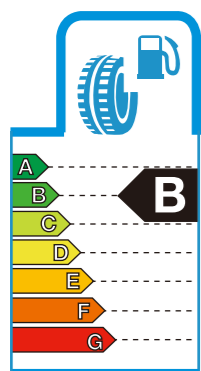
## NEW EUROPEAN TIRE LABEL



All new tires, produced after 1st of July 2012, and to be sold at point of sale in EU countries after 1st of November 2012, must follow EC NO 1222/2009 labeling criteria, and should be labeled with stickers to give the information.

The aim is to improve driving safety, fuel efficiency, and lower noise levels. This regulation allows consumer to make more informed choices when purchasing tires by considering these ranking.

(Source from ETRMA [www.etrma.org/tyres/tyre-labelling](http://www.etrma.org/tyres/tyre-labelling))



### RRC (Rolling Resistance Coefficient)

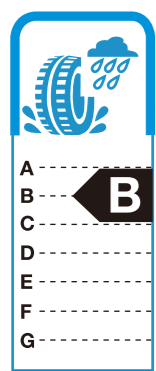
Lower rolling resistance contributes to fuel saving and less carbon dioxide emission.

Grade A: most efficiency

Grade G: least efficiency

Choosing grade A indicates the tire consume less fuel and carbon dioxide emission.

Effect may vary among vehicles and driving conditions, but the difference between a G and an A class for a complete set of tires could reduce fuel consumption by up to 7.5 % and even more in case of trucks.



### Wet grip

Wet grip is an important indication for tire performance of wet road braking distance.

Grade A: the shortest distance

Grade G: the longest distance

Choosing grade A indicates the tire could be shorter 30% braking distance than grade G.

Effect may vary among vehicles and driving conditions, but in the case of full braking, the difference between a G and an A class for a set of four identical tires could be up to 30% shorter braking distance (e.g. for a typical passenger car driving at 80 km/h speed this could be up to 18m shorter braking distance)



### External rolling noise classes

The external rolling noise is measured and declared in decibels (dB), and indicated in three levels. More black bars mean that the tires create more road noise.